

Allgemeine Informationen

Katalog-Nr.: 16106-1-AP	GenBank-Zugangsnummer: BC012620	Reinigungsmethode: Antigen-Affinitätsreinigung
Größe: 150ul , Konzentration: 240 µg/ml durch die Bradford-Methode mit BSA als Standard;	GeneID (NCBI): 9527	Empfohlene Verdünnungen: WB 1:500-1:2000 IHC 1:50-1:500 IF 1:50-1:500
Wirt: Kaninchen	Vollständiger Name: golgi SNAP receptor complex member 1	
Isotyp: IgG	Berechnete Masse: 28.6 kDa	
Immunogen Katalognummer: AG9021	Beobachtete Masse: 28 kDa	

Anwendungen

Geprüfte Anwendungen: FC, IF, IHC, WB,ELISA	Positivkontrollen: WB : NIH/3T3-Zellen, HepG2-Zellen, humanes Lebergewebe, Rattenlebergewebe
Getestete Reaktivität: Human, Maus, Ratte	IHC : humanes Magenkrebsgewebe,
Hinweis-IHC: Antigendemaskierung mit TE- Puffer pH 9,0 empfohlen. (*) Wahlweise kann die Antigendemaskierung auch mit Citratpuffer pH 6,0 erfolgen.	IF : HeLa-Zellen,

Hintergrundinformationen

GS28, also known as GOSR1, is a 28-kDa Golgi SNARE protein that participates in ER-Golgi and intra-Golgi transport. GS28 is considered to be a core component of the Golgi SNARE complex. (PMID: 8638159)

Lagerung

Lagerungsbedingungen:
Bei -20°C lagern. Nach dem Versand ein Jahr lang stabil
Lagerungspuffer:
PBS mit 0.02% Natriumazid und 50% Glycerin pH 7.3.
Aliquotieren ist nicht notwendig bei -20°C Lagerung

***** 20ul-Größen enthalten 0.1% BSA**

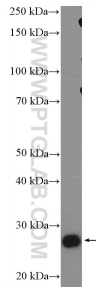
For technical support and original validation data for this product please contact:

T: 1 (888) 4PTGLAB (1-888-478-4522) (toll free
in USA), or 1(312) 455-8498 (outside USA)

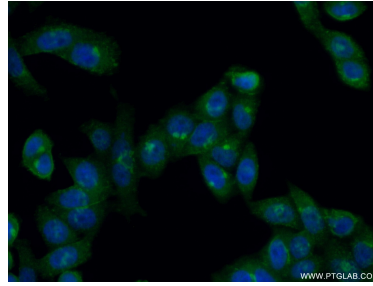
E: proteintech@ptglab.com
W: ptglab.com

**This product is exclusively available under Proteintech
Group brand and is not available to purchase from any
other manufacturer.**

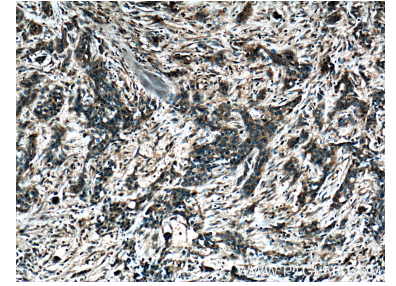
Ausgewählte Validierungsdaten



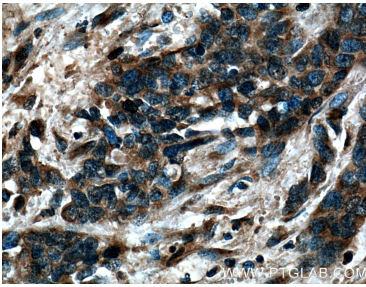
NIH/3T3 cells were subjected to SDS PAGE followed by western blot with 16106-1-AP (GS28 Antibody) at dilution of 1:1000 incubated at room temperature for 1.5 hours.



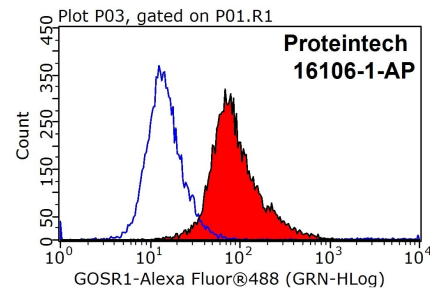
Immunofluorescent analysis of (10% Formaldehyde) fixed HeLa cells using 16106-1-AP (GS28 antibody) at dilution of 1:50 and Alexa Fluor 488-conjugated AffiniPure Goat Anti-Rabbit IgG(H+L).



Immunohistochemical analysis of paraffin-embedded human stomach cancer tissue slide using 16106-1-AP (GS28 Antibody) at dilution of 1:200 (under 10x lens).



Immunohistochemical analysis of paraffin-embedded human stomach cancer tissue slide using 16106-1-AP (GS28 Antibody) at dilution of 1:200 (under 40x lens).



1x10⁶ HeLa cells were stained with 0.2ug GS28 antibody (16106-1-AP, red) and control antibody (blue). Fixed with 90% MeOH blocked with 3% BSA (30 min). Alexa Fluor 488-conjugated AffiniPure Goat Anti-Rabbit IgG(H+L) with dilution 1:1000.