

## Allgemeine Informationen

**Katalog-Nr.:**

16113-1-AP

**Größe:**

150ul , Konzentration: 500 µg/ml von Nanodrop und 253 µg/ml durch die Bradford-Methode mit BSA als Standard;

**Wirt:**

Kaninchen

**Isotyp:**

IgG

**Immunogen Katalognummer:**

AG9036

**GenBank-Zugangsnummer:**

BC017477

**GeneID (NCBI):**

25902

**Vollständiger Name:**

methylenetetrahydrofolate dehydrogenase (NADP+ dependent) 1-like

**Berechnete Masse:**

978 aa, 106 kDa

**Beobachtete Masse:**

106 kDa

**Reinigungsmethode:**

Antigen-Affinitätsreinigung

**Empfohlene Verdünnungen:**

WB 1:2000-1:10000

IP 0.5-4.0 µg für IP und 1:500-1:2000 für WB

IHC 1:50-1:500

IF 1:50-1:500

## Anwendungen

**Geprüfte Anwendungen:**

IF, IHC, IP, WB, ELISA

**In Publikationen genannte Anwendungen:**

IHC, WB

**Getestete Reaktivität:**

Human, Maus, Ratte

**Zitierte Arten:**

Human, Maus

**Hinweis-IHC: Antigendemaskierung mit TE-Puffer pH 9,0 empfohlen. (\*) Wahlweise kann die Antigendemaskierung auch mit Citratpuffer pH 6,0 erfolgen.**

**Positivkontrollen:**

**WB** : HEK-293-Zellen, COLO 320-Zellen, HeLa-Zellen, HepG2-Zellen, Maus-Eierstockgewebe

**IP** : HeLa-Zellen,

**IHC** : humanes Leberkarzinomgewebe,

**IF** : HepG2-Zellen,

## Hintergrundinformationen

MTHFD1L (Monofunctional C1-tetrahydrofolate synthase, mitochondrial) is also named as FTHFSDC1 (Formyltetrahydrofolate synthetase). MTHFD1L enzyme is present in mitochondria from normal embryonic tissues and embryonic fibroblast cell lines, and embryonic mitochondria possess the ability to synthesize formate from glycine. It catalyzes the final step in the mitochondrial conversion of 1-C units to formate in embryos. Moreover, MTHFD1L levels were substantially higher in embryonic mitochondria than in adult liver mitochondria and embryonic mitochondria exhibited greater formate production (PMID:19948730). It has 2 isoforms produced by alternative splicing.

## Bemerkenswerte Veröffentlichungen

Verfasser	Pubmed ID	Journal	Anwendung
Costas Koufaris	30275950	Cancer Metab	WB
Li Cui	34533844	J Pineal Res	WB, IHC
Saara Forsström	31523008	Cell Metab	WB

## Lagerung

**Lagerungsbedingungen:**

Bei -20°C lagern. Nach dem Versand ein Jahr lang stabil

**Lagerungspuffer:**

PBS mit 0.02% Natriumazid und 50% Glycerin pH 7.3.

Aliquotieren ist nicht notwendig bei -20°C Lagerung

\*\*\* 20ul-Größen enthalten 0.1% BSA

For technical support and original validation data for this product please contact:

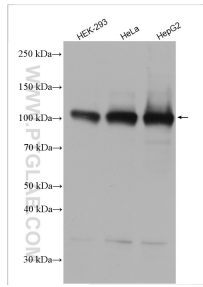
T: 1 (888) 4PTGLAB (1-888-478-4522) (toll free in USA), or 1(312) 455-8498 (outside USA)

E: [proteintech@ptglab.com](mailto:proteintech@ptglab.com)

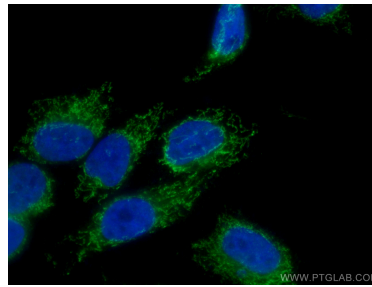
W: [ptglab.com](http://ptglab.com)

This product is exclusively available under Proteintech Group brand and is not available to purchase from any other manufacturer.

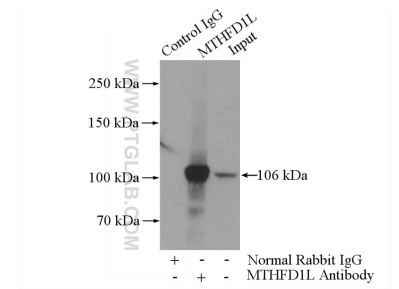
## Ausgewählte Validierungsdaten



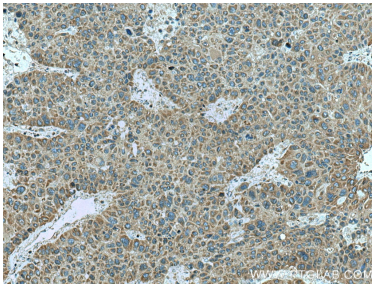
Various lysates were subjected to SDS PAGE followed by western blot with 16113-1-AP (MTHFD1L antibody) at dilution of 1:5000 incubated at room temperature for 1.5 hours.



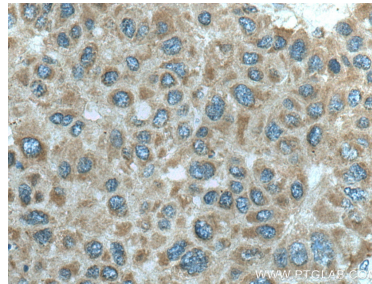
Immunofluorescent analysis of (4% PFA) fixed HepG2 cells using 16113-1-AP (MTHFD1L antibody) at dilution of 1:100 and CoraLite488-Conjugated AffiniPure Goat Anti-Rabbit IgG(H+L).



IP Result of anti-MTHFD1L (IP:16113-1-AP, 4ug; Detection:16113-1-AP 1:1000) with HeLa cells lysate 2000ug.



Immunohistochemical analysis of paraffin-embedded human liver cancer tissue slide using 16113-1-AP (MTHFD1L antibody) at dilution of 1:200 (under 10x lens). Heat mediated antigen retrieval with Tris-EDTA buffer (pH 9.0).



Immunohistochemical analysis of paraffin-embedded human liver cancer tissue slide using 16113-1-AP (MTHFD1L antibody) at dilution of 1:200 (under 40x lens). Heat mediated antigen retrieval with Tris-EDTA buffer (pH 9.0).