

Nur für Forschungszwecke

PPP1R8 Polyklonaler Antikörper

Katalog-Nr.:16115-1-AP



Allgemeine Informationen

Katalog-Nr.: 16115-1-AP	GenBank-Zugangsnummer: BC013360	Reinigungsmethode: Antigen-Affinitätsreinigung
Größe: 150ul , Konzentration: 550 µg/ml von Nanodrop und 367 µg/ml durch die Bradford-Methode mit BSA als Standard;	GeneID (NCBI): 5511	Empfohlene Verdünnungen: WB 1:500-1:1000 IHC 1:20-1:200 IF 1:50-1:500
Wirt: Kaninchen	Vollständiger Name: protein phosphatase 1, regulatory (inhibitor) subunit 8	
Isotyp: IgG	Berechnete Masse: 209 aa, 23 kDa	
Immunogen Katalognummer: AG9041	Beobachtete Masse: 47 kDa, 28 kDa, 19 kDa	

Anwendungen

Geprüfte Anwendungen: IF, IHC, WB, ELISA	Positivkontrollen:
Getestete Reaktivität: Human, Maus, Ratte	WB : PC-3-Zellen, HepG2-Zellen
Hinweis-IHC: Antigenmaskierung mit TE-Puffer pH 9,0 empfohlen. (*) Wahlweise kann die Antigenmaskierung auch mit Citratpuffer pH 6,0 erfolgen.	IHC : humanes Nierengewebe, humanes Hodengewebe, humanes Milzgewebe
	IF : HepG2-Zellen,

Hintergrundinformationen

PPP1R8, also named as ARD1, NIPP1, is a 351 amino acid protein, which has a basic N- and C-terminal and an acidic central domain. PPP1R8 is ubiquitously expressed, with highest levels in heart and skeletal muscle, followed by brain, placenta, lung, liver and pancreas. PPP1R8 has RNA-binding activity but does not cleave RNA and may target PP-1 to RNA-associated substrates and may also be involved in pre-mRNA splicing. PPP1R8 exists many isoforms and molecular weight of modified isoforms is about 18 kDa, 28 kDa and 47 kDa.

Lagerung

Lagerungsbedingungen:
Bei -20°C lagern. Nach dem Versand ein Jahr lang stabil
Lagerungspuffer:
PBS mit 0.02% Natriumazid und 50% Glycerin pH 7.3.
Aliquotieren ist nicht notwendig bei -20°C Lagerung

***** 20ul-Größen enthalten 0.1% BSA**

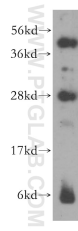
For technical support and original validation data for this product please contact:

T: 1 (888) 4PTGLAB (1-888-478-4522) (toll free in USA), or 1(312) 455-8498 (outside USA)

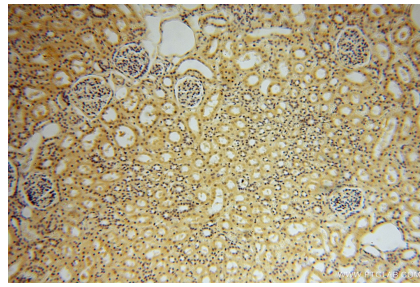
E: proteintech@ptglab.com
W: ptglab.com

This product is exclusively available under Proteintech Group brand and is not available to purchase from any other manufacturer.

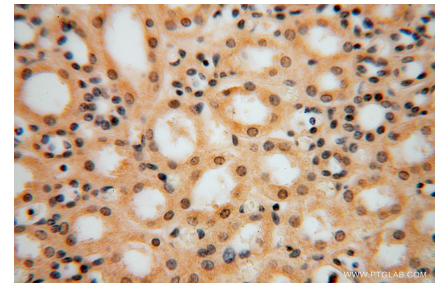
Ausgewählte Validierungsdaten



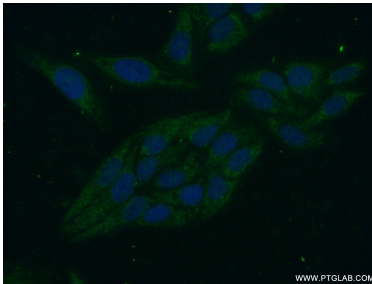
PC-3 cells were subjected to SDS PAGE followed by western blot with 16115-1-AP (PPP1R8 antibody) at dilution of 1:300 incubated at room temperature for 1.5 hours.



Immunohistochemical analysis of paraffin-embedded human kidney using 16115-1-AP (PPP1R8 antibody) at dilution of 1:50 (under 10x lens).



Immunohistochemical analysis of paraffin-embedded human kidney using 16115-1-AP (PPP1R8 antibody) at dilution of 1:50 (under 40x lens).



Immunofluorescent analysis of (-20°C Ethanol) fixed HepG2 cells using 16115-1-AP (PPP1R8 antibody) at dilution of 1:50 and Alexa Fluor 488-conjugated AffiniPure Goat Anti-Rabbit IgG(H+L).