

Nur für Forschungszwecke

RLIM Polyklonaler Antikörper

Katalog-Nr.:16121-1-AP

Vorgestelltes Produkt

5 Publikationen



Allgemeine Informationen

Katalog-Nr.:

16121-1-AP

Größe:

150ul, Konzentration: 600 µg/ml von Nanodrop und 293 µg/ml durch die Bradford-Methode mit BSA als Standard;

Wirt:

Kaninchen

Isotyp:

IgG

Immunogen Katalognummer:

AG9077

GenBank-Zugangsnummer:

BC013357

GeneID (NCBI):

51132

Vollständiger Name:

ring finger protein, LIM domain interacting

Berechnete Masse:

624 aa, 69 kDa

Beobachtete Masse:

75 kDa

Reinigungsmethode:

Antigen-Affinitätsreinigung

Empfohlene Verdünnungen:

WB 1:500-1:2000
IP 0.5-4.0 µg für IP und 1:500-1:1000 für WB

Anwendungen

Geprüfte Anwendungen:

IP, WB, ELISA

In Publikationen genannte Anwendungen:

CoIP, IF, IHC, IP, WB

Getestete Reaktivität:

Human, Maus, Ratte

Zitierte Arten:

Human, Maus

Positivkontrollen:

WB : HeLa-Zellen, Jurkat-Zellen

IP : HeLa-Zellen,

Hintergrundinformationen

RLIM (RING finger LIM domain-binding protein), also known as RNF12 (RING finger protein 12) or NY-REN-43, is a 624 amino acid RING-H2 zinc finger protein that is involved in protein ubiquitylation and subsequent degradation. Expressed in a variety of tissues, RLIM binds to the LIM domain of various proteins and functions as a protein ligase that negatively co-regulates LIM homeodomain (LIM-HD) transcription factors. Through its interaction with Sin3A, a component of the histone deacetylase corepressor complex, RLIM is able to recruit the corepressor complex to LIM-HD proteins, thereby inhibiting LIM-HD transcription. In addition to recruiting the deacetylase complex to LIM-HD proteins, RLIM is able to bind to, ubiquitinate and subsequently degrade CLIM proteins, which function as positive co-regulators of LIM-HD transcription factors. RLIM contains one RING-type zinc finger and is implicated in renal cell carcinoma. The calculated molecular weight of RLIM is 69 kDa, but modified RLIM is about 70-75 kDa.

Bemerkenswerte Veröffentlichungen

Verfasser	Pubmed ID	Journal	Anwendung
Chao Li	26317901	Oncotarget	WB
Yongsheng Huang	29137325	Oncotarget	WB
Tomasz Chelminski	24842875	Elife	WB

Lagerung

Lagerungsbedingungen:

Bei -20°C lagern. Nach dem Versand ein Jahr lang stabil

Lagerungspuffer:

PBS mit 0.02% Natriumazid und 50% Glycerin pH 7.3.

Aliquotieren ist nicht notwendig bei -20°C Lagerung

*** 20ul-Größen enthalten 0.1% BSA

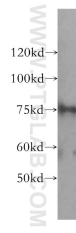
For technical support and original validation data for this product please contact:

T: 1 (888) 4PTGLAB (1-888-478-4522) (toll free in USA), or 1(312) 455-8498 (outside USA)

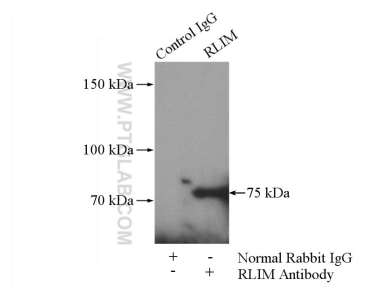
E: proteintech@ptglab.com
W: ptglab.com

This product is exclusively available under Proteintech Group brand and is not available to purchase from any other manufacturer.

Ausgewählte Validierungsdaten



HeLa cells were subjected to SDS PAGE followed by western blot with 16121-1-AP (RLIM antibody) at dilution of 1:500 incubated at room temperature for 1.5 hours.



IP Result of anti-RLIM (IP:16121-1-AP, 4ug; Detection:16121-1-AP 1:500) with HeLa cells lysate 1520ug.