

## Allgemeine Informationen

<b>Katalog-Nr.:</b> 16127-1-AP	<b>GenBank-Zugangsnummer:</b> BC009371	<b>Reinigungsmethode:</b> Antigen-Affinitätsreinigung
<b>Größe:</b> 150ul , Konzentration: 450 µg/ml von Nanodrop;	<b>GeneID (NCBI):</b> 79827	<b>Empfohlene Verdünnungen:</b> WB 1:1000-1:4000 IHC 1:250-1:1000
<b>Wirt:</b> Kaninchen	<b>Vollständiger Name:</b> adipocyte-specific adhesion molecule	
<b>Isotyp:</b> IgG	<b>Berechnete Masse:</b> 373 aa, 41 kDa	
<b>Immunogen Katalognummer:</b> AG9111	<b>Beobachtete Masse:</b> 45-50 kDa	

## Anwendungen

<b>Geprüfte Anwendungen:</b> IHC, WB, ELISA	<b>Positivkontrollen:</b> WB : Maushirngewebe, 3T3-L1-Zellen, Rattenhirngewebe IHC : braunes Mausfettgewebe,
<b>In Publikationen genannte Anwendungen:</b> WB	
<b>Getestete Reaktivität:</b> Human, Maus, Ratte	
<b>Zitierte Arten:</b> Human	
<b>Hinweis-IHC: Antigendemaskierung mit TE-Puffer pH 9,0 empfohlen. (*) Wahlweise kann die Antigendemaskierung auch mit Citratpuffer pH 6,0 erfolgen.</b>	

## Hintergrundinformationen

CLMP (Coxsackie- and adenovirus receptor-like membrane protein), also known as ACAM (adipocyte adhesion molecule) or ASAM, is a member of the CTX (cortical thymocyte marker in Xenopus) family of proteins. CTX family proteins are type I transmembrane proteins within the Ig superfamily that localize to junctional complexes between endothelial and epithelial cells and may play a role in cell-cell adhesion. CLMP is predominantly expressed in epithelial cells within different tissues and in the white adipose tissue. It may be involved in the cell-cell adhesion and may play a role in adipocyte differentiation and development of obesity.

## Bemerkenswerte Veröffentlichungen

Verfasser	Pubmed ID	Journal	Anwendung
Hiroki Takeuchi	34448537	Cell Microbiol	WB

## Lagerung

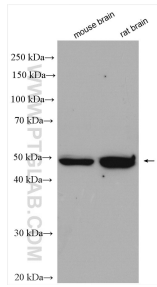
**Lagerungsbedingungen:**  
Bei -20°C lagern. Nach dem Versand ein Jahr lang stabil  
**Lagerungspuffer:**  
PBS mit 0.02% Natriumazid und 50% Glycerin pH 7.3.  
Aliquotieren ist nicht notwendig bei -20°C Lagerung

\*\*\* 20ul-Größen enthalten 0.1% BSA

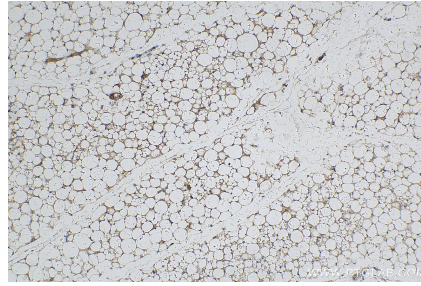
For technical support and original validation data for this product please contact:  
T: 1 (888) 4PTGLAB (1-888-478-4522) (toll free in USA), or 1(312) 455-8498 (outside USA)  
E: [proteintech@ptglab.com](mailto:proteintech@ptglab.com)  
W: [ptglab.com](http://ptglab.com)

This product is exclusively available under Proteintech Group brand and is not available to purchase from any other manufacturer.

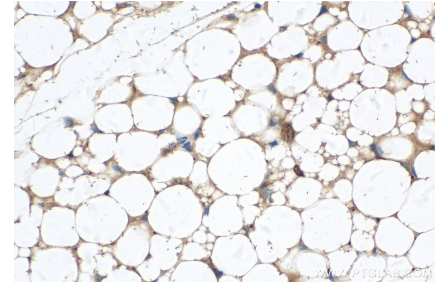
## Ausgewählte Validierungsdaten



Various lysates were subjected to SDS PAGE followed by western blot with 16127-1-AP (CLMP antibody) at dilution of 1:2000 incubated at room temperature for 1.5 hours.



Immunohistochemical analysis of paraffin-embedded mouse brown adipose tissue slide using 16127-1-AP (CLMP antibody) at dilution of 1:500 (under 10x lens). Heat mediated antigen retrieval with Tris-EDTA buffer (pH 9.0).



Immunohistochemical analysis of paraffin-embedded mouse brown adipose tissue slide using 16127-1-AP (CLMP antibody) at dilution of 1:500 (under 40x lens). Heat mediated antigen retrieval with Tris-EDTA buffer (pH 9.0).