

Nur für Forschungszwecke

CCR2a-specific Polyklonaler Antikörper



Katalog-Nr.: 16153-1-AP

13 Publikationen

Allgemeine Informationen

Katalog-Nr.: 16153-1-AP	GenBank-Zugangsnummer: NM_000647	Reinigungsmethode: Antigen-Affinitätsreinigung
Größe: 150ul, Konzentration: 600 µg/ml von Nanodrop und 373 µg/ml durch die Bradford-Methode mit BSA als Standard;	GeneID (NCBI): 729230	Empfohlene Verdünnungen: WB 1:500-1:1000 IHC 1:20-1:200
Wirt: Kaninchen	Vollständiger Name: chemokine (C-C motif) receptor 2	
Isotyp: IgG	Berechnete Masse: 42 kDa	
	Beobachtete Masse: 42 kDa	

Anwendungen

Geprüfte Anwendungen: FC, IHC, WB, ELISA	Positivkontrollen: WB: Jurkat-Zellen, A431-Zellen
In Publikationen genannte Anwendungen: IF, IHC, WB	IHC: humanes Nierengewebe, humanes Ovarialkarzinomgewebe
Getestete Reaktivität: Human	
Zitierte Arten: Human, Maus, Ratte	
Hinweis-IHC: Antigendemaskierung mit TE-Puffer pH 9,0 empfohlen. (*) Wahlweise kann die Antigendemaskierung auch mit Citratpuffer pH 6,0 erfolgen.	

Hintergrundinformationen

CCR2 encodes a receptor for MCP1, functioning in inflammatory processes, tumor infiltration and monocyte invasion of artery walls in atherosclerosis. There are two isoforms of CCR2, CCR2A and CCR2B. CCR2 isoforms were expressed by different cell subsets in both normal and IIM muscle. CCR2A was expressed in vessel walls and by some mononuclear cells, especially in cells involved in partial invasion in PM and IBM. CCR2B expression was observed in all satellite cells, in the muscular domain of neuromuscular junctions and in some regenerative fibers of IIM, but not in inflammatory exudates. The sequences of the two isoforms are different from 314-374 aa. This antibody 16153-1-AP is raised against the peptide of 344-358 amino acids of CCR2a. It is specific to CCR2a.

Bemerkenswerte Veröffentlichungen

Verfasser	Pubmed ID	Journal	Anwendung
Hiroaki Yasui	31541326	Clin Exp Metastasis	IHC
Tian Xu	34699947	J Ethnopharmacol	WB
Shin Ung Kang	34775491	Lab Invest	WB

Lagerung

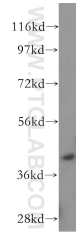
Lagerungsbedingungen:
Bei -20°C lagern. Nach dem Versand ein Jahr lang stabil
Lagerungspuffer:
PBS mit 0.02% Natriumazid und 50% Glycerin pH 7.3.
Aliquotieren ist nicht notwendig bei -20°C Lagerung

*** 20ul-Größen enthalten 0.1% BSA

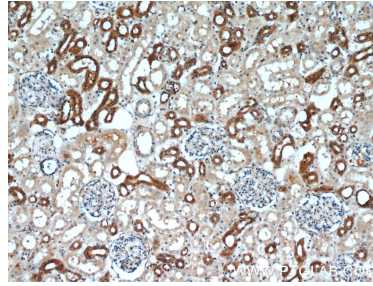
For technical support and original validation data for this product please contact:
T: 1 (888) 4PTGLAB (1-888-478-4522) (toll free in USA), or 1(312) 455-8498 (outside USA)
E: proteintech@ptglab.com
W: ptglab.com

This product is exclusively available under Proteintech Group brand and is not available to purchase from any other manufacturer.

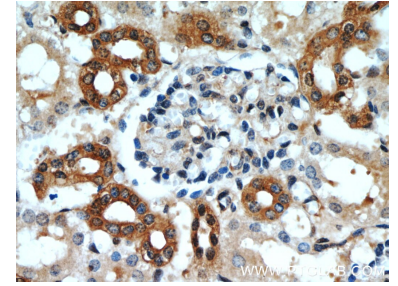
Ausgewählte Validierungsdaten



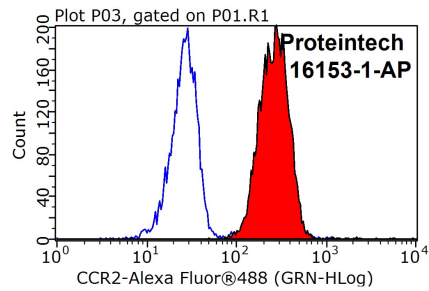
Jurkat cells were subjected to SDS PAGE followed by western blot with 16153-1-AP (CCR2-specific antibody) at dilution of 1:200 incubated at room temperature for 1.5 hours.



Immunohistochemical analysis of paraffin-embedded human kidney slide using 16153-1-AP (CCR2-specific antibody at dilution of 1:50.



Immunohistochemical analysis of paraffin-embedded human kidney slide using 16153-1-AP (CCR2-specific antibody at dilution of 1:50.



1X10⁶ Jurkat cells were stained with 0.2ug CCR2-specific antibody (16153-1-AP, red) and control antibody (blue). Fixed with 90% MeOH blocked with 3% BSA (30 min). Alexa Fluor 488-conjugated AffiniPure Goat Anti-Rabbit IgG(H+L) with dilution 1:1000.