

Nur für Forschungszwecke

# KRAS-2B-specific Polyklonaler Antikörper



Katalog-Nr.: 16155-1-AP

Vorgestelltes Produkt

5 Publikationen

## Allgemeine Informationen

<b>Katalog-Nr.:</b> 16155-1-AP	<b>GenBank-Zugangsnummer:</b> NM_004985	<b>Reinigungsmethode:</b> Antigen-Affinitätsreinigung
<b>Größe:</b> 150ul, Konzentration: 850 µg/ml von Nanodrop und 593 µg/ml durch die Bradford-Methode mit BSA als Standard;	<b>GeneID (NCBI):</b> 3845	<b>Empfohlene Verdünnungen:</b> WB 1:500-1:2000 IHC 1:50-1:500 IF 1:50-1:500
<b>Wirt:</b> Kaninchen	<b>Vollständiger Name:</b> v-Ki-ras2 Kirsten rat sarcoma viral oncogene homolog	
<b>Isotyp:</b> IgG	<b>Berechnete Masse:</b> 21 kDa	
	<b>Beobachtete Masse:</b> 21 kDa	

## Anwendungen

### Geprüfte Anwendungen:

IF, IHC, WB, ELISA

### In Publikationen genannte Anwendungen:

FC, WB

### Getestete Reaktivität:

Human, Maus

### Zitierte Arten:

Human

### Positivkontrollen:

**WB:** HeLa-Zellen, HEK-293-Zellen, Maushirngewebe, Mausnierengewebe, MCF-7-Zellen

**IHC:** humanes Kolonkarzinomgewebe,

**IF:** HeLa-Zellen,

**Hinweis-IHC: Antigenmaskierung mit TE-Puffer pH 9,0 empfohlen. (\*) Wahlweise kann die Antigenmaskierung auch mit Citratpuffer pH 6,0 erfolgen.**

## Hintergrundinformationen

RAS gene family encodes very similar 21KD proteins and are homologs of rodent sarcoma virus genes that have transforming abilities. KRAS has two isoforms, 2A and 2B. This antibody is specific for KRAS-2B.

## Bemerkenswerte Veröffentlichungen

Verfasser	Pubmed ID	Journal	Anwendung
Andrew M Waters	28951536	Sci Signal	WB
Mahmoud Labib	32719513	Nat Biomed Eng	FC
Sascha Röth	32668202	Cell Chem Biol	WB

## Lagerung

### Lagerungsbedingungen:

Bei -20°C lagern. Nach dem Versand ein Jahr lang stabil

### Lagerungspuffer:

PBS mit 0.02% Natriumazid und 50% Glycerin pH 7.3.

Aliquotieren ist nicht notwendig bei -20°C Lagerung

\*\*\* 20ul-Größen enthalten 0.1% BSA

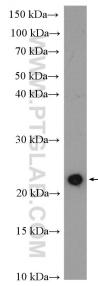
For technical support and original validation data for this product please contact:

T: 1 (888) 4PTGLAB (1-888-478-4522) (toll free in USA), or 1(312) 455-8498 (outside USA)

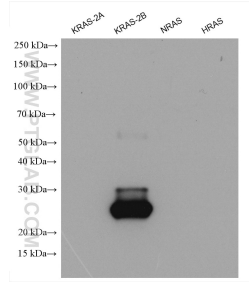
E: proteintech@ptglab.com  
W: ptglab.com

This product is exclusively available under Proteintech Group brand and is not available to purchase from any other manufacturer.

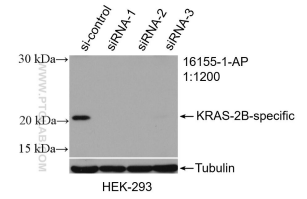
## Ausgewählte Validierungsdaten



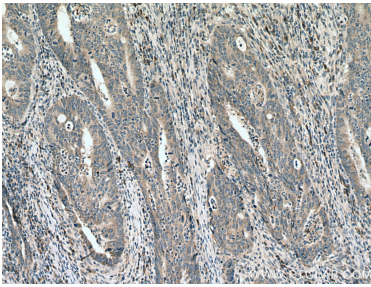
HeLa cells were subjected to SDS PAGE followed by western blot with 16155-1-AP (KRAS-2B-specific antibody) at dilution of 1:1000 incubated at room temperature for 1.5 hours.



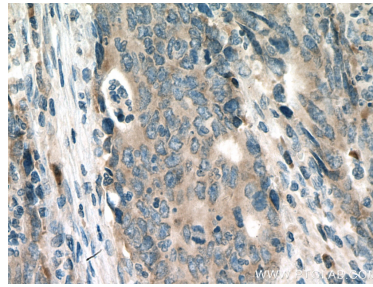
Recombinant proteins (ag27444 (6<sup>35</sup>S tag-KRAS-2A), ag21645 (6<sup>35</sup>S tag-KRAS-2B), ag29746 (6<sup>35</sup>S tag-NRAS), ag23265 (GST-HRAS)) were subjected to SDS PAGE followed by western blot with 16155-1-AP (KRAS-2B-specific antibody) at dilution of 1:2000 incubated at room temperature for 1.5 hours.



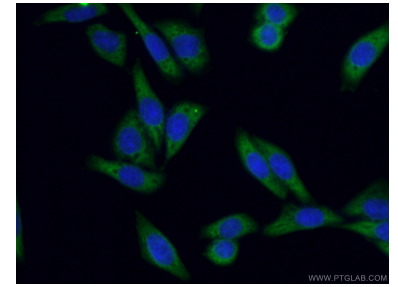
HEK-293 cells were subjected to SDS PAGE followed by western blot with 16155-1-AP (KRAS-2B-specific antibody) at dilution of 1:1200 incubated at room temperature for 1.5 hours.



Immunohistochemical analysis of paraffin-embedded human colon cancer tissue slide using 16155-1-AP (KRAS-2B-specific antibody) at dilution of 1:200 (under 10x lens). Heat mediated antigen retrieval with Tris-EDTA buffer (pH 9.0).



Immunohistochemical analysis of paraffin-embedded human colon cancer tissue slide using 16155-1-AP (KRAS-2B-specific antibody) at dilution of 1:200 (under 40x lens). Heat mediated antigen retrieval with Tris-EDTA buffer (pH 9.0).



Immunofluorescent analysis of (-20°C Ethanol) fixed HeLa cells using 16155-1-AP (KRAS-2B-specific antibody) at dilution of 1:50 and Alexa Fluor 488-Conjugated AffiniPure Goat Anti-Rabbit IgG(H+L).