

Nur für Forschungszwecke

# KRAS-2A-specific Polyklonaler Antikörper



Katalog-Nr.: 16156-1-AP

2 Publikationen

## Allgemeine Informationen

<b>Katalog-Nr.:</b> 16156-1-AP	<b>GenBank-Zugangsnummer:</b> NM_033360	<b>Reinigungsmethode:</b> Antigen-Affinitätsreinigung
<b>Größe:</b> 150ul, Konzentration: 1400 µg/ml von 3845 Nanodrop und 693 µg/ml durch die Bradford-Methode mit BSA als Standard;	<b>GeneID (NCBI):</b> v-Ki-ras2 Kirsten rat sarcoma viral oncogene homolog	<b>Empfohlene Verdünnungen:</b> WB 1:500-1:1000 IF 1:50-1:500
<b>Wirt:</b> Kaninchen	<b>Vollständiger Name:</b> v-Ki-ras2 Kirsten rat sarcoma viral oncogene homolog	
<b>Isotyp:</b> IgG	<b>Berechnete Masse:</b> 21 kDa	
	<b>Beobachtete Masse:</b> 21-24 kDa	

## Anwendungen

<b>Geprüfte Anwendungen:</b> FC, IF, WB, ELISA	<b>Positivkontrollen:</b> WB : NIH/3T3-Zellen, IF : SH-SY5Y-Zellen,
<b>In Publikationen genannte Anwendungen:</b> WB	
<b>Getestete Reaktivität:</b> Human	
<b>Zitierte Arten:</b> Human	

## Hintergrundinformationen

RAS (derived from 'Rat Sarcoma' virus) gene family includes KRAS, HRAS, and NRAS. These genes encode very similar 21 kDa proteins and are homologs of rodent sarcoma virus genes that have transforming abilities. KRAS has two isoforms, 2A and 2B. This antibody is specific for KRAS-2A, which also named as KRAS-4A.

## Bemerkenswerte Veröffentlichungen

Verfasser	Pubmed ID	Journal	Anwendung
Andrew M Waters	28951536	Sci Signal	WB
Sascha Röth	32668202	Cell Chem Biol	WB

## Lagerung

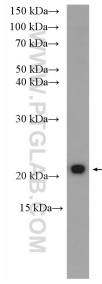
**Lagerungsbedingungen:**  
Bei -20°C lagern. Nach dem Versand ein Jahr lang stabil  
**Lagerungspuffer:**  
PBS mit 0.02% Natriumazid und 50% Glycerin pH 7.3.  
Aliquotieren ist nicht notwendig bei -20°C Lagerung

\*\*\* 20ul-Größen enthalten 0.1% BSA

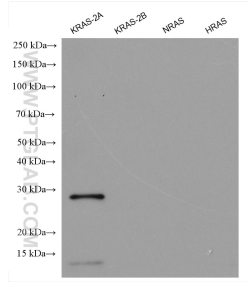
For technical support and original validation data for this product please contact:  
T: 1 (888) 4PTGLAB (1-888-478-4522) (toll free in USA), or 1(312) 455-8498 (outside USA)  
E: proteintech@ptglab.com  
W: ptglab.com

This product is exclusively available under Proteintech Group brand and is not available to purchase from any other manufacturer.

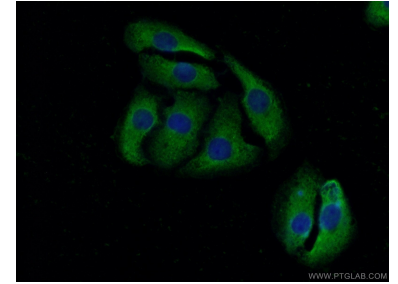
## Ausgewählte Validierungsdaten



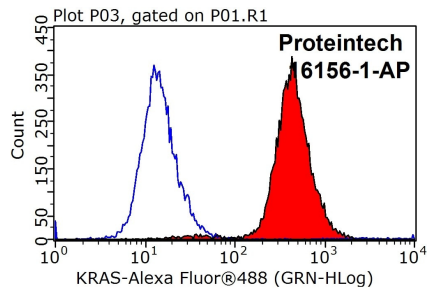
NIH/3T3 cells were subjected to SDS PAGE followed by western blot with 16156-1-AP (KRAS-2A-specific antibody) at dilution of 1:600 incubated at room temperature for 1.5 hours.



Recombinant proteins (ag27444 (6\*His tag-KRAS-2A), ag21645(6\*His tag-KRAS-2B), ag29746(6\*His tag-NRAS), ag23265(GST-HRAS)) were subjected to SDS PAGE followed by western blot with 16155-1-AP (KRAS-2B-specific antibody) at dilution of 1:2000 incubated at room temperature for 1.5 hours.



Immunofluorescent analysis of (-20°C Acetone) fixed SH-SY5Y cells using 16156-1-AP (KRAS-2A-specific antibody) at dilution of 1:50 and Alexa Fluor 488-conjugated AffiniPure Goat Anti-Rabbit IgG(H+L).



1X10<sup>6</sup> HeLa cells were stained with 0.2ug KRAS-2A-specific antibody (16156-1-AP, red) and control antibody (blue). Fixed with 90% MeOH blocked with 3% BSA (30 min). Alexa Fluor 488-conjugated AffiniPure Goat Anti-Rabbit IgG(H+L) with dilution 1:1000.