

Nur für Forschungszwecke

# Presenilin-1-Specific Polyklonaler Antikörper



Katalog-Nr.: 16163-1-AP

Vorgestelltes Produkt

14 Publikationen

## Allgemeine Informationen

Katalog-Nr.:  
16163-1-AP

Größe:  
150ul, Konzentration: 500 µg/ml von  
Nanodrop;

Wirt:  
Kaninchen

Isotyp:  
IgG

GenBank-Zugangsnummer:  
NM\_000021

GeneID (NCBI):  
5663

Vollständiger Name:  
presenilin 1

Berechnete Masse:  
53 kDa

Beobachtete Masse:  
53 kDa, 21kDa

Reinigungsmethode:

Antigen-Affinitätsreinigung

Empfohlene Verdünnungen:

WB 1:1000-1:8000

IP 0.5-4.0 µg für IP und 1:500-1:2000  
für WB

IHC 1:500-1:2000

## Anwendungen

Geprüfte Anwendungen:

IHC, IP, WB, ELISA

In Publikationen genannte Anwendungen:

IHC, WB

Getestete Reaktivität:

Human, Maus, Ratte

Zitierte Arten:

Hausschwein, Human, Maus, Ratte

**Hinweis-IHC: Antigendemaskierung mit TE-Puffer pH 9,0 empfohlen. (\*) Wahlweise kann die Antigendemaskierung auch mit Citratpuffer pH 6,0 erfolgen.**

Positivkontrollen:

WB: COS-7-Zellen, HeLa-Zellen, HepG2-Zellen, humanes Nierengewebe, Jurkat-Zellen, Maushirngewebe, Rattenhirngewebe

IP: Mausnierengewebe,

IHC: humanes Prostatakarzinomgewebe,

## Hintergrundinformationen

PSEN1(presenilin-1) is also named as AD3, PS1, PSNL1 and belongs to the peptidase A22A family. It directly influences Netrin/DCC signaling with cell type precision and spatiotemporal specificity, and is a key neural circuit builder that gates the spatiotemporal pattern of guidance signaling, thereby ensuring neural projections occur with high fidelity(PMID:21215373). The 46-kDa PSEN1 holoprotein is cleaved into a D30-kDa N-terminal fragment (NTF) and a D20-kDa C-terminal fragment (CTF) by the 26S proteasome(PMID:10527805). It has 7 isoforms produced by alternative splicing. This antibody is specific to isoform1(53 kDa), isoform2(52 kDa), isoform4(21 kDa), isoform7(49 kDa) of this protein.

## Bemerkenswerte Veröffentlichungen

Verfasser	Pubmed ID	Journal	Anwendung
Laura Gerosa	35613587	Cell Rep	WB
Muhammad Mushtaq	29029400	Oncotarget	IHC
Xiaoqing Zhang	33723239	Cell Death Discov	WB

## Lagerung

Lagerungsbedingungen:

Bei -20°C lagern. Nach dem Versand ein Jahr lang stabil

Lagerungspuffer:

PBS mit 0.02% Natriumazid und 50% Glycerin pH 7.3.

Aliquotieren ist nicht notwendig bei -20°C Lagerung

\*\*\* 20ul-Größen enthalten 0.1% BSA

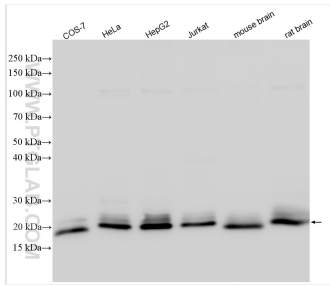
For technical support and original validation data for this product please contact:

T: 1 (888) 4PTGLAB (1-888-478-4522) (toll free in USA), or 1(312) 455-8498 (outside USA)

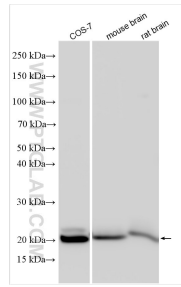
E: proteintech@ptglab.com  
W: ptglab.com

This product is exclusively available under Proteintech Group brand and is not available to purchase from any other manufacturer.

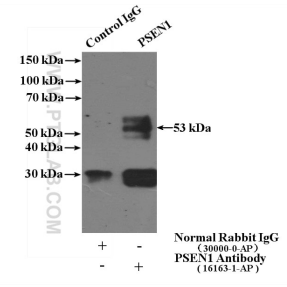
## Ausgewählte Validierungsdaten



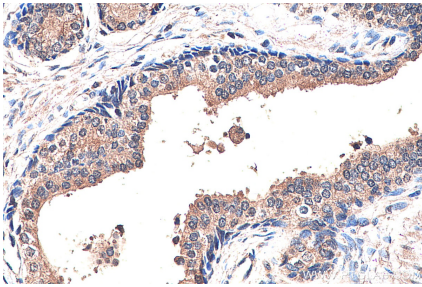
Various lysates were subjected to SDS PAGE followed by western blot with 16163-1-AP (Presenilin-1-Specific antibody) at dilution of 1:4000 incubated at room temperature for 1.5 hours.



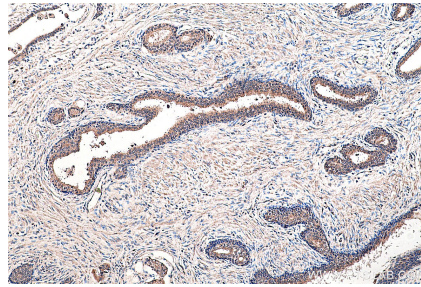
Various lysates were subjected to SDS PAGE followed by western blot with 16163-1-AP (Presenilin-1-Specific antibody) at dilution of 1:3000 incubated at room temperature for 1.5 hours.



IP Result of anti-Presenilin-1-Specific (IP:16163-1-AP, 4ug; Detection:16163-1-AP 1:1000) with mouse kidney tissue lysate 4000ug.



Immunohistochemical analysis of paraffin-embedded human prostate cancer tissue slide using 16163-1-AP (Presenilin-1-Specific antibody) at dilution of 1:1000 (under 40x lens). Heat mediated antigen retrieval with Tris-EDTA buffer (pH 9.0).



Immunohistochemical analysis of paraffin-embedded human prostate cancer tissue slide using 16163-1-AP (Presenilin-1-Specific antibody) at dilution of 1:1000 (under 10x lens). Heat mediated antigen retrieval with Tris-EDTA buffer (pH 9.0).