

## Allgemeine Informationen

Katalog-Nr.:  
16206-1-AP

Größe:  
150ul , Konzentration: 650 µg/ml von  
Nanodrop und 267 µg/ml durch die  
Bradford-Methode mit BSA als  
Standard;

Wirt:  
Kaninchen

Isotyp:  
IgG

Immunogen Katalognummer:  
AG9177

GenBank-Zugangsnummer:  
BC010061

GeneID (NCBI):  
54903

Vollständiger Name:  
Meckel syndrome, type 1

Berechnete Masse:  
559 aa, 65 kDa

Beobachtete Masse:  
65-70 kDa

Reinigungsmethode:

Antigen-Affinitätsreinigung

Empfohlene Verdünnungen:

WB 1:500-1:2000  
IP 0.5-4.0 µg für IP und 1:500-1:2000  
für WB  
IHC 1:50-1:500  
IF 1:20-1:200

## Anwendungen

Geprüfte Anwendungen:

IF, IHC, IP, WB, ELISA

In Publikationen genannte Anwendungen:

IF, WB

Getestete Reaktivität:

Human, Maus, Ratte

Zitierte Arten:

Human, Maus

**Hinweis-IHC: Antigendemaskierung mit TE-Puffer pH 9,0 empfohlen. (\*) Wahlweise kann die Antigendemaskierung auch mit Citratpuffer pH 6,0 erfolgen.**

Positivkontrollen:

WB : Maushirngewebe, HEK-293-Zellen, HeLa-Zellen, Maus-Uterusgewebe, SH-SY5Y-Zellen

IP : HEK-293-Zellen,

IHC : humanes Leberkarzinomgewebe,

IF : hTERT-RPE1-Zellen und embryonale Fibroblasten aus der Maus (MEF-Zellen),

## Hintergrundinformationen

MKS1 (Meckel syndrome type 1 protein) is a 559-amino acid protein that contains a conserved B9 domain. It is a component of a large protein complex which localizes to the ciliary transition zone and regulates mammalian ciliogenesis and ciliary membrane composition (PMID: 21725307). MKS1 is required for ciliary structure and function, and is involved in centrosome migration to the apical cell surface during early ciliogenesis (PMID: 17185389; 19515853). Broad tissue expression of the MKS1 gene has been reported (PMID: 16415886). Defects in MKS1 are the cause of Meckel syndrome type 1 (MKS1), an autosomal recessive lethal malformation syndrome characterized by renal cystic dysplasia, central nervous system malformations, and hepatic developmental defects (PMID: 16415886). In addition, defects in MKS1 are also the cause of Bardet-Biedl syndrome type 13 (BBS13) (PMID: 18327255).

## Bemerkenswerte Veröffentlichungen

Verfasser	Pubmed ID	Journal	Anwendung
T Tony Yang	26365165	Sci Rep	IF
Yunfan Yang	25342559	Cell Res	WB
Gisela G Slaats	26490104	J Med Genet	WB, IF

## Lagerung

Lagerungsbedingungen:

Bei -20°C lagern. Nach dem Versand ein Jahr lang stabil

Lagerungspuffer:

PBS mit 0.02% Natriumazid und 50% Glycerin pH 7.3.

Aliquotieren ist nicht notwendig bei -20°C Lagerung

**\*\*\* 20ul-Größen enthalten 0.1% BSA**

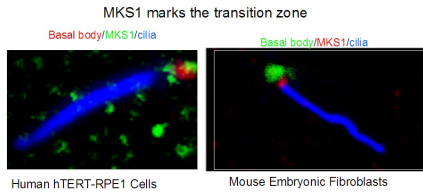
For technical support and original validation data for this product please contact:

T: 1 (888) 4PTGLAB (1-888-478-4522) (toll free in USA), or 1(312) 455-8498 (outside USA)

E: [proteintech@ptglab.com](mailto:proteintech@ptglab.com)  
W: [ptglab.com](http://ptglab.com)

**This product is exclusively available under Proteintech Group brand and is not available to purchase from any other manufacturer.**

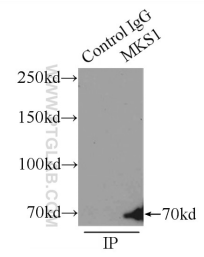
## Ausgewählte Validierungsdaten



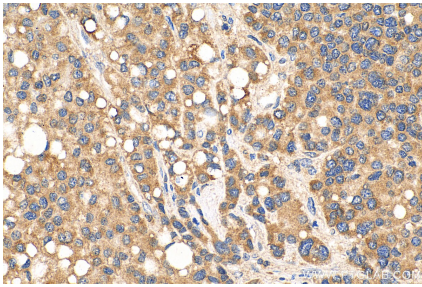
IF result from Dr. Corbit, Kevin. anti-MKS1 (16206-1-AP) marks the transition zone of Human hTERT-RPE1 cells and Mouse embryonic fibroblasts.



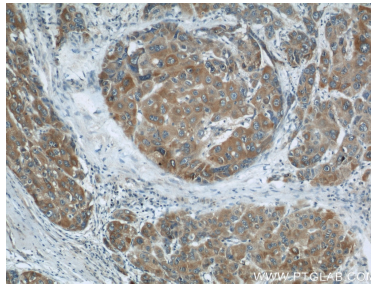
mouse brain tissue were subjected to SDS PAGE followed by western blot with 16206-1-AP (MKS1 antibody) at dilution of 1:1000 incubated at room temperature for 1.5 hours.



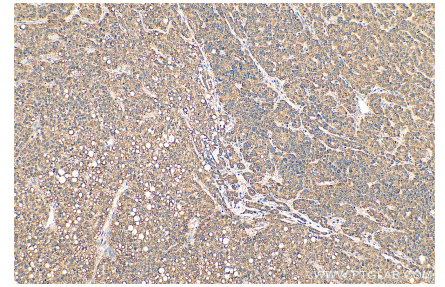
IP Result of anti-MKS1 (IP:16206-1-AP, 3ug; Detection:16206-1-AP 1:1000) with HEK-293 cells lysate 4500ug.



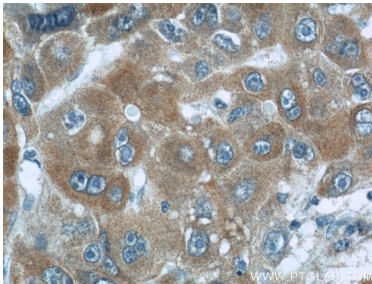
Immunohistochemical analysis of paraffin-embedded human liver cancer tissue slide using 16206-1-AP (MKS1 antibody) at dilution of 1:200 (under 40x lens). Heat mediated antigen retrieval with Tris-EDTA buffer (pH 9.0).



Immunohistochemical analysis of paraffin-embedded human liver cancer using 16206-1-AP (MKS1 antibody) at dilution of 1:50 (under 10x lens).



Immunohistochemical analysis of paraffin-embedded human liver cancer tissue slide using 16206-1-AP (MKS1 antibody) at dilution of 1:200 (under 10x lens). Heat mediated antigen retrieval with Tris-EDTA buffer (pH 9.0).



Immunohistochemical analysis of paraffin-embedded human liver cancer using 16206-1-AP (MKS1 antibody) at dilution of 1:50 (under 40x lens).