

Nur für Forschungszwecke

# MCL1 Polyklonaler Antikörper

Katalog-Nr.:16225-1-AP

Vorgestelltes Produkt

105 Publikationen



## Allgemeine Informationen

Katalog-Nr.:  
16225-1-AP

Größe:  
150ul, Konzentration: 600 µg/ml von  
Nanodrop und 440 µg/ml durch die  
Bradford-Methode mit BSA als  
Standard;

Wirt:  
Kaninchen

Isotyp:  
IgG

Immunogen Katalognummer:  
AG10397

GenBank-Zugangsnummer:  
BC107735

GeneID (NCBI):  
4170

Vollständiger Name:  
myeloid cell leukemia sequence 1  
(BCL2-related)

Berechnete Masse:  
350 aa, 37 kDa

Beobachtete Masse:  
35-40 kDa

Reinigungsmethode:  
Antigen-Affinitätsreinigung

Empfohlene Verdünnungen:  
WB 1:1000-1:8000  
IP 0.5-4.0 µg für IP und 1:500-1:2000  
für WB  
IF 1:50-1:500

## Anwendungen

Geprüfte Anwendungen:  
FC, IF, IP, WB, ELISA

In Publikationen genannte Anwendungen:  
IF, IHC, IP, WB

Getestete Reaktivität:  
Human, Maus, Ratte

Zitierte Arten:  
Human, Maus, Ratte

Positivkontrollen:

WB: Jurkat-Zellen, A431-Zellen, HEK-293T-Zellen,  
HeLa-Zellen, HL-60-Zellen, humanes Hirngewebe,  
humanes Lebergewebe, K-562-Zellen,  
Mausmilzgewebe, MCF-7-Zellen, Raji-Zellen

IP: Raji-Zellen,

IF: MCF-7-Zellen,

## Hintergrundinformationen

MCL-1 is an anti-apoptotic member of the Bcl-2 family originally isolated from the ML-1 human myeloid leukemia cell line. Similar to BCL2 and BCL2L1, MCL1 can interact with BAX and/or BAK1 to inhibit mitochondria-mediated apoptosis. Mcl-1 is critical for the proliferation and survival of myeloma cells in vitro, and overexpression of Mcl-1 protein in myeloma cells is associated with relapse and short event-free survival in multiple myeloma patients. Recent studies show that MCL-1 is upregulated in numerous haematological and solid tumour malignancies. Therefore, MCL-1 has been suggested as a potential new therapeutic target. MCL-1 can be alternatively spliced into a long form (MCL-1L, 40 kDa) or a short form (MCL-1S, 30 kDa). (PMID: 15467463, PMID: 15147382)

## Bemerkenswerte Veröffentlichungen

Verfasser	Pubmed ID	Journal	Anwendung
Yanhui Zhu	36183949	J Ethnopharmacol	IF
Liping Shan	33072561	Front Oncol	WB
Yang Gao	32932732	Int J Mol Sci	IHC

## Lagerung

Lagerungsbedingungen:

Bei -20°C lagern. Nach dem Versand ein Jahr lang stabil

Lagerungspuffer:

PBS mit 0.02% Natriumazid und 50% Glycerin pH 7.3.

Aliquotieren ist nicht notwendig bei -20°C Lagerung

\*\*\* 20ul-Größen enthalten 0.1% BSA

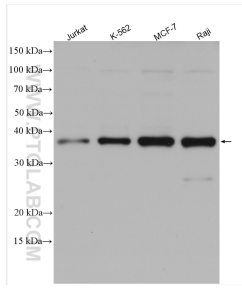
For technical support and original validation data for this product please contact:

T: 1 (888) 4PTGLAB (1-888-478-4522) (toll free  
in USA), or 1(312) 455-8498 (outside USA)

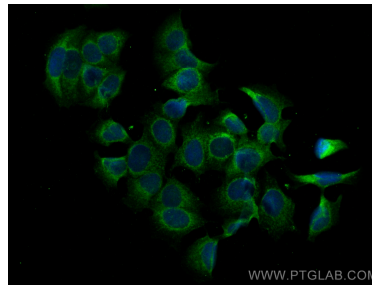
E: proteintech@ptglab.com  
W: ptglab.com

This product is exclusively available under Proteintech Group brand and is not available to purchase from any other manufacturer.

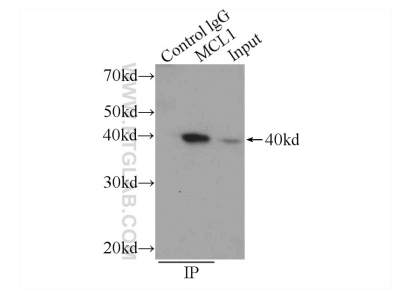
## Ausgewählte Validierungsdaten



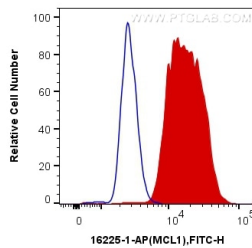
Various lysates were subjected to SDS PAGE followed by western blot with 16225-1-AP (MCL1 antibody) at dilution of 1:4000 incubated at room temperature for 1.5 hours.



Immunofluorescent analysis of (-20°C Methanol) fixed MCF-7 cells using MCL1 antibody (16225-1-AP) at dilution of 1:200 and CoraLite® 488-Conjugated AffiniPure Goat Anti-Rabbit IgG(H+L).



IP Result of anti-MCL1 (IP:16225-1-AP, 3ug; Detection:16225-1-AP 1:1000) with Raji cells lysate 800ug.



1X10<sup>6</sup> Ramos cells were intracellularly stained with 0.5 ug Anti-Human MCL1 (16225-1-AP) and CoraLite® 488-Conjugated AffiniPure Goat Anti-Rabbit IgG(H+L) at dilution 1:1000 (red), or 0.5 ug Control Antibody. Cells were fixed and permeabilized with Transcription Factor Staining Buffer Kit (PF00011).