

Allgemeine Informationen

Katalog-Nr.: 16231-1-AP	GenBank-Zugangsnummer: BC013963	Reinigungsmethode: Antigen-Affinitätsreinigung
Größe: 150ul , Konzentration: 750 µg/ml von Nanodrop;	GeneID (NCBI): 10487	Empfohlene Verdünnungen: WB 1:1000-1:6000 IP 0.5-4.0 ug für IP und 1:500-1:1000 für WB IHC 1:20-1:200
Wirt: Kaninchen	Vollständiger Name: CAP, adenylate cyclase-associated protein 1 (yeast)	
Isotyp: IgG	Berechnete Masse: 475 aa, 52 kDa	
Immunogen Katalognummer: AG8876	Beobachtete Masse: 52 kDa	

Anwendungen

Geprüfte Anwendungen: FC, IHC, IP, WB, ELISA	Positivkontrollen: WB : Caco-2-Zellen, COLO 320-Zellen, HepG2-Zellen IP : A431-Zellen, IHC : humanes Pankreaskarzinomgewebe,
In Publikationen genannte Anwendungen: IF, WB	
Getestete Reaktivität: Human, Maus, Ratte	
Zitierte Arten: Hausschwein, Human, Maus, Ratte, Rind	
Hinweis-IHC: Antigendemaskierung mit TE-Puffer pH 9,0 empfohlen. (*) Wahlweise kann die Antigendemaskierung auch mit Citratpuffer pH 6,0 erfolgen.	

Hintergrundinformationen

CAP1, also known as CAP, CAP1-PEN, belongs to the CAP family and contains 1 C-CAP/cofactor C-like domain. CAP1 binds to monomeric actin and regulates the actin cytoskeleton to control cell size, adhesion, and migration (PMID: 23737525). CAP1 also functions as a receptor for inflammatory cytokine resistin (PMID: 24606903). CAP1 is an abundant and ubiquitously expressed protein. Western blot analysis detected CAP1 at an apparent molecular mass of 52 kDa.

Bemerkenswerte Veröffentlichungen

Verfasser	Pubmed ID	Journal	Anwendung
Anika Heinze	36264429	Cell Mol Life Sci	WB
Shunli Yang	31684202	Viruses	WB
Xiaohan Yuan	30847953	Cell Biochem Funct	WB

Lagerung

Lagerungsbedingungen:
Bei -20°C lagern. Nach dem Versand ein Jahr lang stabil
Lagerungspuffer:
PBS mit 0.02% Natriumazid und 50% Glycerin pH 7.3.
Aliquotieren ist nicht notwendig bei -20°C Lagerung

*** 20ul-Größen enthalten 0.1% BSA

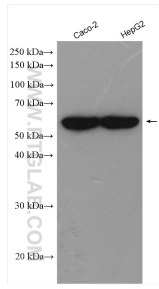
For technical support and original validation data for this product please contact:

T: 1 (888) 4PTGLAB (1-888-478-4522) (toll free in USA), or 1(312) 455-8498 (outside USA)

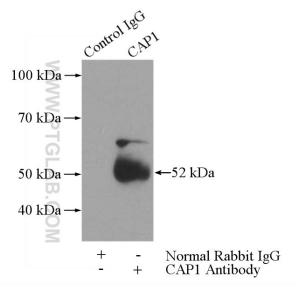
E: proteintech@ptglab.com
W: ptglab.com

This product is exclusively available under Proteintech Group brand and is not available to purchase from any other manufacturer.

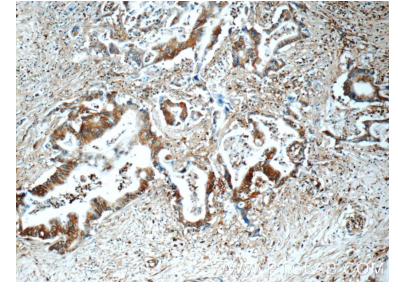
Ausgewählte Validierungsdaten



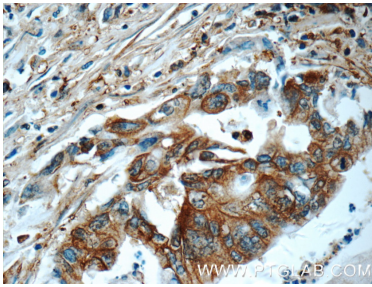
Caco-2 cells were subjected to SDS PAGE followed by western blot with 16231-1-AP (CAP1 antibody) at dilution of 1:3000 incubated at room temperature for 1.5 hours.



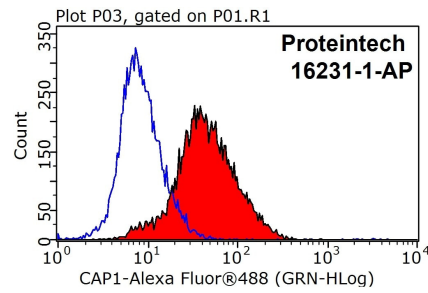
IP Result of anti-CAP1 (IP:16231-1-AP, 3ug; Detection:16231-1-AP 1:500) with A431 cells lysate 1520ug.



Immunohistochemical analysis of paraffin-embedded human pancreas cancer tissue slide using 16231-1-AP (CAP1 Antibody) at dilution of 1:50 (under 10x lens).



Immunohistochemical analysis of paraffin-embedded human pancreas cancer tissue slide using 16231-1-AP (CAP1 Antibody) at dilution of 1:50 (under 40x lens).



1x10⁶ HeLa cells were stained with 0.2ug CAP1 antibody (16231-1-AP, red) and control antibody (blue). Fixed with 90% MeOH blocked with 3% BSA (30 min). Alexa Fluor 488-conjugated AffiniPure Goat Anti-Rabbit IgG(H+L) with dilution 1:1000.