

Allgemeine Informationen

Katalog-Nr.:
16251-1-AP

Größe:
150ul, Konzentration: 700 µg/ml von Nanodrop und 393 µg/ml durch die Bradford-Methode mit BSA als Standard;

Wirt:
Kaninchen

Isotyp:
IgG

Immunogen Katalognummer:
AG9236

GenBank-Zugangsnummer:
BC014001

GeneID (NCBI):
23197

Vollständiger Name:
Fas associated factor family member 2

Berechnete Masse:
445 aa, 53 kDa

Beobachtete Masse:
53 kDa

Reinigungsmethode:

Antigen-Affinitätsreinigung

Empfohlene Verdünnungen:

WB 1:1000-1:8000

IP 0.5-4.0 µg für IP und 1:500-1:2000

für WB

IHC 1:50-1:500

Anwendungen

Geprüfte Anwendungen:

IHC, IP, WB, ELISA

In Publikationen genannte Anwendungen:

IF, IHC, IP, WB

Getestete Reaktivität:

Human, Maus, Ratte

Zitierte Arten:

Human, Rind

Hinweis-IHC: Antigenmaskierung mit TE-Puffer pH 9,0 empfohlen. (*) Wahlweise kann die Antigenmaskierung auch mit Citratpuffer pH 6,0 erfolgen.

Positivkontrollen:

WB: HEK-293-Zellen, HeLa-Zellen, HepG2-Zellen, K-562-Zellen, Maushirngewebe, MCF-7-Zellen, Rattenhirngewebe, SH-SY5Y-Zellen, U2OS-Zellen

IP: Maushirngewebe,

IHC: humanes Mammakarzinomgewebe, Maushirngewebe

Hintergrundinformationen

Protein ETEA (FAF2, or UBXD8) is a homolog to Fas-associated factor 1 (FAF1), which is involved in Fas-mediated apoptosis. ETEA protein directly interacts with and negatively regulates neurofibromin. ETEA contains both UBA and UBX domains and overexpression of ETEA downregulates neurofibromin in human cells. It may play a role in the translocation of terminally misfolded proteins from the endoplasmic reticulum lumen to the cytoplasm and their degradation by the proteasome. ETEA is highly expressed in peripheral blood of patients with atopic dermatitis (AD) compared to normal individuals, and may regulate the resistance to apoptosis that is observed in T cells and eosinophils of AD patients.

Bemerkenswerte Veröffentlichungen

Verfasser	Pubmed ID	Journal	Anwendung
Ting Zhang	26424800	Mol Biol Cell	WB
Milton To	27881664	Mol Biol Cell	WB
Edmond Y Huang	29514927	Mol Biol Cell	WB

Lagerung

Lagerungsbedingungen:

Bei -20°C lagern. Nach dem Versand ein Jahr lang stabil

Lagerungspuffer:

PBS mit 0.02% Natriumazid und 50% Glycerin pH 7.3.

Aliquotieren ist nicht notwendig bei -20°C Lagerung

***** 20ul-Größen enthalten 0.1% BSA**

For technical support and original validation data for this product please contact:

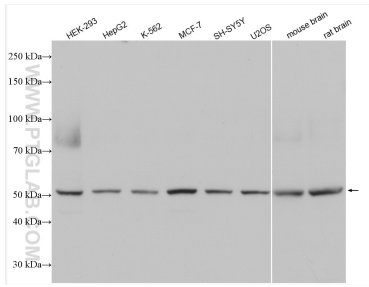
T: 1 (888) 4PTGLAB (1-888-478-4522) (toll free in USA), or 1(312) 455-8498 (outside USA)

E: proteintech@ptglab.com

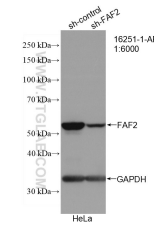
W: ptglab.com

This product is exclusively available under Proteintech Group brand and is not available to purchase from any other manufacturer.

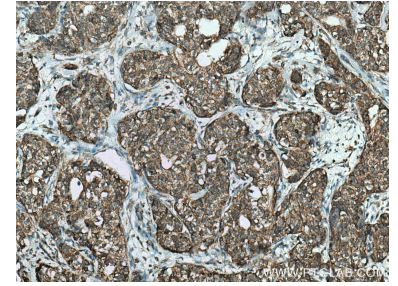
Ausgewählte Validierungsdaten



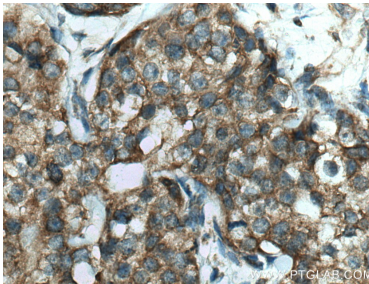
Various lysates were subjected to SDS PAGE followed by western blot with 16251-1-AP (FAF2 antibody) at dilution of 1:4000 incubated at room temperature for 1.5 hours.



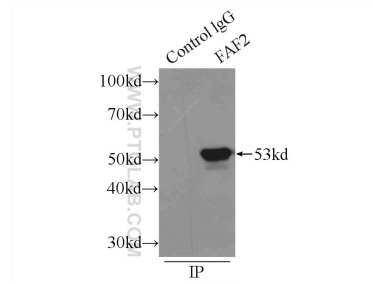
WB result of FAF2 antibody (16251-1-AP; 1:6000; incubated at room temperature for 1.5 hours) with sh-Control and sh-FAF2 transfected HeLa cells.



Immunohistochemical analysis of paraffin-embedded human breast cancer tissue slide using 16251-1-AP (FAF2 antibody) at dilution of 1:200 (under 10x lens). Heat mediated antigen retrieval with Tris-EDTA buffer (pH 9.0).



Immunohistochemical analysis of paraffin-embedded human breast cancer tissue slide using 16251-1-AP (FAF2 antibody) at dilution of 1:200 (under 40x lens). Heat mediated antigen retrieval with Tris-EDTA buffer (pH 9.0).



IP Result of anti-FAF2 (IP:16251-1-AP, 3ug; Detection:16251-1-AP 1:1000) with mouse brain tissue lysate 5000ug.