

Nur für Forschungszwecke

# SYAP1 Polyklonaler Antikörper

Katalog-Nr.:16272-1-AP

Vorgestelltes Produkt

3 Publikationen



## Allgemeine Informationen

<b>Katalog-Nr.:</b> 16272-1-AP	<b>GenBank-Zugangsnummer:</b> BC014657	<b>Reinigungsmethode:</b> Antigen-Affinitätsreinigung
<b>Größe:</b> 150ul , Konzentration: 300 µg/ml von Nanodrop und 193 µg/ml durch die Bradford-Methode mit BSA als Standard;	<b>GeneID (NCBI):</b> 94056	<b>Empfohlene Verdünnungen:</b> WB 1:1000-1:6000 IHC 1:50-1:500 IF 1:20-1:200
<b>Wirt:</b> Kaninchen	<b>Vollständiger Name:</b> synapse associated protein 1, SAP47 homolog (Drosophila)	
<b>Isotyp:</b> IgG	<b>Berechnete Masse:</b> 352 aa, 40 kDa	
<b>Immunogen Katalognummer:</b> AG9342	<b>Beobachtete Masse:</b> 50-55 kDa	

## Anwendungen

<b>Geprüfte Anwendungen:</b> IF, IHC, WB, ELISA	<b>Positivkontrollen:</b> <b>WB :</b> HEK-293-Zellen, A431-Zellen, HepG2-Zellen, L02-Zellen, Mauslebergewebe, Mauslungengewebe, Rattenlungengewebe, SMMC-7721-Zellen
<b>In Publikationen genannte Anwendungen:</b> IF, WB	<b>IHC :</b> humanes Zervixkarzinomgewebe, humanes Dünndarmgewebe
<b>Getestete Reaktivität:</b> Human, Maus, Ratte	<b>IF :</b> HepG2-Zellen, A431-Zellen
<b>Zitierte Arten:</b> Maus	

**Hinweis-IHC: Antigenmaskierung mit TE-Puffer pH 9,0 empfohlen. (\*) Wahlweise kann die Antigenmaskierung auch mit Citratpuffer pH 6,0 erfolgen.**

## Hintergrundinformationen

SYAP1(Synapse-associated protein 1) is a human homologue of the Drosophila SAP47 (synapse associated protein), which is recognized by a monoclonal antibody that selectively stain synaptic terminals. This protein is a 352 amino acid protein that is ubiquitously expressed in adult tissues. SYAP1 contains one BSD domain which is an approximately 60 amino acid long protein domain named after the BTF2-like transcription factors, Synapse-associated proteins and DOS2-like proteins in which it is found.

## Bemerkenswerte Veröffentlichungen

Verfasser	Pubmed ID	Journal	Anwendung
Dominique Schmitt	27344443	Histochem Cell Biol	WB,IF
Cora R von Collenberg	31118165	Biol Open	IF
Xinxin Zuo	33398173	Nat Struct Mol Biol	WB

## Lagerung

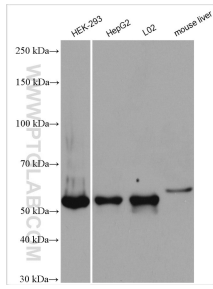
**Lagerungsbedingungen:**  
Bei -20°C lagern. Nach dem Versand ein Jahr lang stabil  
**Lagerungspuffer:**  
PBS mit 0.02% Natriumazid und 50% Glycerin pH 7.3.  
Aliquotieren ist nicht notwendig bei -20°C Lagerung

\*\*\* 20ul-Größen enthalten 0.1% BSA

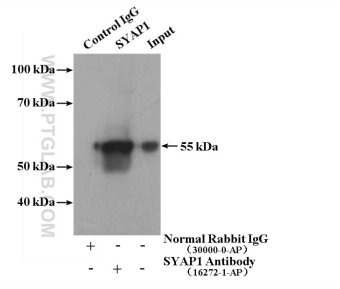
For technical support and original validation data for this product please contact:  
T: 1 (888) 4PTGLAB (1-888-478-4522) (toll free in USA), or 1(312) 455-8498 (outside USA)  
E: proteintech@ptglab.com  
W: ptglab.com

This product is exclusively available under Proteintech Group brand and is not available to purchase from any other manufacturer.

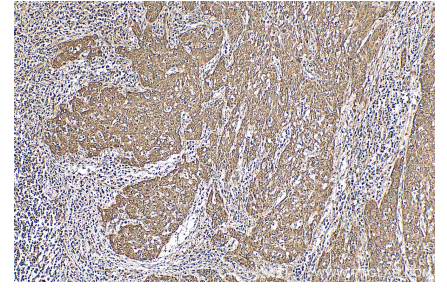
## Ausgewählte Validierungsdaten



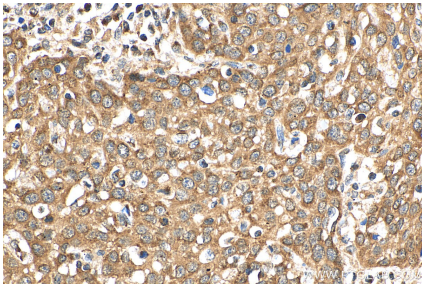
Various lysates were subjected to SDS PAGE followed by western blot with 16272-1-AP (SYAP1 antibody) at dilution of 1:3000 incubated at room temperature for 1.5 hours.



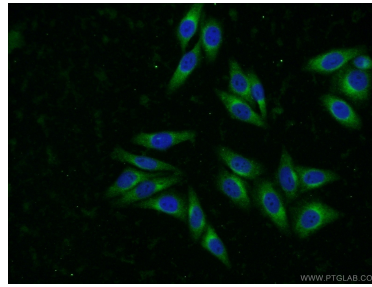
IP Result of anti-SYAP1 (IP:16272-1-AP, 4ug; Detection:16272-1-AP 1:500) with L02 cells lysate 1800ug.



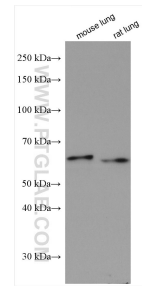
Immunohistochemical analysis of paraffin-embedded human cervical cancer tissue slide using 16272-1-AP (SYAP1 antibody) at dilution of 1:200 (under 10x lens). Heat mediated antigen retrieval with Tris-EDTA buffer (pH 9.0).



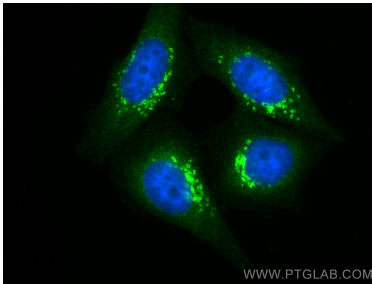
Immunohistochemical analysis of paraffin-embedded human cervical cancer tissue slide using 16272-1-AP (SYAP1 antibody) at dilution of 1:200 (under 40x lens). Heat mediated antigen retrieval with Tris-EDTA buffer (pH 9.0).



Immunofluorescent analysis of HepG2 cells using 16272-1-AP (SYAP1 antibody) at dilution of 1:50 and Alexa Fluor 488-conjugated AffiniPure Goat Anti-Rabbit IgG(H+L).



Various lysates were subjected to SDS PAGE followed by western blot with 16272-1-AP (SYAP1 antibody) at dilution of 1:2000 incubated at room temperature for 1.5 hours.



Immunofluorescent analysis of (4% PFA) fixed HepG2 cells using SYAP1 antibody (16272-1-AP) at dilution of 1:200 and CoraLite®488-Conjugated AffiniPure Goat Anti-Rabbit IgG(H+L).