

Nur für Forschungszwecke

MYC tag Polyklonaler Antikörper

Katalog-Nr.:16286-1-AP

216 Publikationen



Allgemeine Informationen

Katalog-Nr.:
16286-1-AP

Größe:
150ul, Konzentration: 1500 µg/ml von
Nanodrop;

Wirt:
Kaninchen

Isotyp:
IgG

Immunogen Katalognummer:
AG9409

GenBank-Zugangsnummer:

GeneID (NCBI):

Vollständiger Name:

Reinigungsmethode:

Antigen-Affinitätsreinigung

Empfohlene Verdünnungen:

WB 1:1000-1:8000

IF 1:200-1:800

Anwendungen

Geprüfte Anwendungen:

IF, IP, WB, ELISA

In Publikationen genannte Anwendungen:

CoIP, FC, IF, IHC, IP, WB

Getestete Reaktivität:

Rekombinantes Protein

Zitierte Arten:

Huhn, Human, Maus

Positivkontrollen:

WB: Rekombinantes Protein Protein, Recombinant protein

IF: Transfizierte HEK-293-Zellen, MCF-7-Zellen

Hintergrundinformationen

The myc-tag is a short synthetic polypeptide sequence derived from c-MYC protein that can be added to recombinant proteins to enable isolation and study when an antibody is not available. This antibody recognizes the MYC tag EQKLISEEDL. MYC tag is a part of c-MYC protein. So there's weaker 62-65 kDa bands for endogenous c-MYC protein. What is the molecular weight of myc? 1203Da: the ten amino acid myc tag sequence is EQKLISEEDL (in single letter code). What are the applications for myc tag? The addition of the myc tag to a particular protein can be useful when an antibody is not available to the protein of interest. Using recombinant DNA technology, the myc tag can be fused to the protein and then an antibody against the myc tag can be used to probe (PMID: 24490106). This is a reliable method and can be used in a number of different techniques, including purification using chromatography, tracking the protein in localization studies using immunofluorescence, or quantifying levels using Western Blot (PMID: 24490106). What is the structure of myc tag? The c-myc gene from which this tag is derived has a molecular weight of 49kDa, but the myc tag represents only a small portion of the C-terminus of this gene. The short polypeptide sequence can be fused to the N-terminus or the C-terminus of any protein without influencing function, although it is advised to avoid fusing it to a secretory signal. A cleavage site behind this tag is also sometimes engineered to allow removal with a specific protease.

Bemerkenswerte Veröffentlichungen

Verfasser	Pubmed ID	Journal	Anwendung
Pengcheng Ma	36179027	Sci Adv	WB
Ningning Yao	28966017	Structure	IF
Fengxia Zhang	36153541	Cell Div	WB

Lagerung

Lagerungsbedingungen:

Bei -20°C lagern. Nach dem Versand ein Jahr lang stabil

Lagerungspuffer:

PBS mit 0.02% Natriumazid und 50% Glycerin pH 7.3.

Aliquotieren ist nicht notwendig bei -20°C Lagerung

*** 20ul-Größen enthalten 0.1% BSA

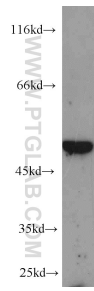
For technical support and original validation data for this product please contact:

T: 1 (888) 4PTGLAB (1-888-478-4522) (toll free in USA), or 1(312) 455-8498 (outside USA)

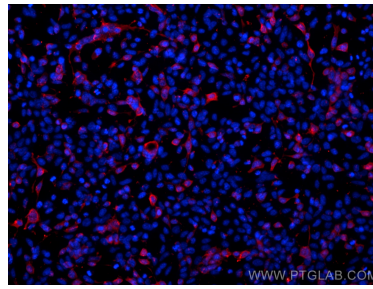
E: proteintech@ptglab.com
W: ptglab.com

This product is exclusively available under Proteintech Group brand and is not available to purchase from any other manufacturer.

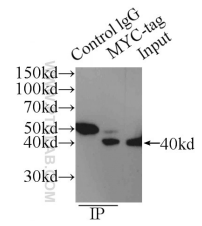
Ausgewählte Validierungsdaten



Recombinant protein were subjected to SDS PAGE followed by western blot with 16286-1-AP (MYC-tag antibody) at dilution of 1:4000 incubated at room temperature for 1.5 hours.



Immunofluorescent analysis of (-20°C Ethanol) fixed Transfected HEK-293 cells using MYC tag antibody (16286-1-AP) at dilution of 1:400 and CoraLite®488-Conjugated AffiniPure Goat Anti-Rabbit IgG(H+L).



IP Result of anti-MYC-tag (IP:16286-1-AP, 4ug; Detection:16286-1-AP 1:1000) with Transfected HEK-293 cells lysate 300ug.