

Nur für Forschungszwecke

GHITM Polyklonaler Antikörper

Katalog-Nr.:16296-1-AP

Vorgestelltes Produkt

4 Publikationen



Allgemeine Informationen

Katalog-Nr.: 16296-1-AP	GenBank-Zugangsnummer: BC010354	Reinigungsmethode: Antigen-Affinitätsreinigung
Größe: 150ul, Konzentration: 650 µg/ml von Nanodrop;	GeneID (NCBI): 27069	Empfohlene Verdünnungen: WB 1:200-1:1000 IHC 1:50-1:500 IF 1:50-1:500
Wirt: Kaninchen	Vollständiger Name: growth hormone inducible transmembrane protein	
Isotyp: IgG	Berechnete Masse: 345 aa, 37 kDa	
Immunogen Katalognummer: AG9482	Beobachtete Masse: 42 kDa, 25-27 kDa	

Anwendungen

Geprüfte Anwendungen: IF, IHC, WB, ELISA	Positivkontrollen: WB : Mauslebergewebe, HEK-293-Zellen, HeLa-Zellen, SH-SY5Y-Zellen IHC : Maushirngewebe, IF : HeLa-Zellen,
In Publikationen genannte Anwendungen: WB	
Getestete Reaktivität: Human, Maus	
Zitierte Arten: Human, Maus	
Hinweis-IHC: Antigenmaskierung mit TE-Puffer pH 9,0 empfohlen. (*) Wahlweise kann die Antigenmaskierung auch mit Citratpuffer pH 6,0 erfolgen.	

Hintergrundinformationen

GHITM, also known as MICS1, TMBIM5 or DERP2, is a mitochondrial protein which localizes in the inner membrane. GHITM is involved in mitochondrial morphology in specific cristae structures and the apoptotic release of cytochrome c from the mitochondria (PMID: 18417609). The gene of GHITM maps to chromosome 10q23.1, and encodes a 345-amino-acid protein with a calculated molecular mass of 37 kDa. The apparent molecular weight has been reported to be 42 kDa, the increased size in the protein may be due to post-translational modifications (PMID: 11416014; 16412389). GHITM can be cleaved into smaller forms of 23-27 kDa (PMID: 16412389; 18417609).

Bemerkenswerte Veröffentlichungen

Verfasser	Pubmed ID	Journal	Anwendung
Bruno Seitaj	32977469	Cells	WB
Li Zhang	35715207	Life Sci Alliance	WB
L. Orliaguet	36042203	Nat Commun	WB

Lagerung

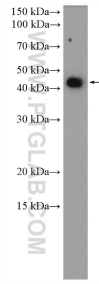
Lagerungsbedingungen:
Bei -20°C lagern. Nach dem Versand ein Jahr lang stabil
Lagerungspuffer:
PBS mit 0.02% Natriumazid und 50% Glycerin pH 7.3.
Aliquotieren ist nicht notwendig bei -20°C Lagerung

*** 20ul-Größen enthalten 0.1% BSA

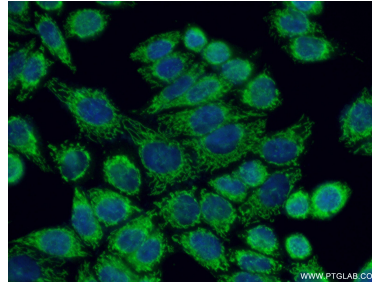
For technical support and original validation data for this product please contact:
T: 1 (888) 4PTGLAB (1-888-478-4522) (toll free in USA), or 1(312) 455-8498 (outside USA)
E: proteintech@ptglab.com
W: ptglab.com

This product is exclusively available under Proteintech Group brand and is not available to purchase from any other manufacturer.

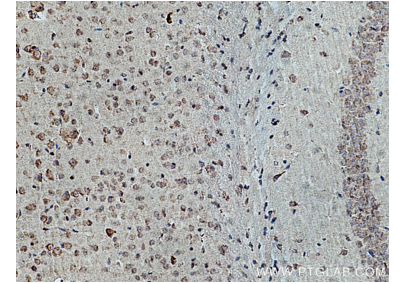
Ausgewählte Validierungsdaten



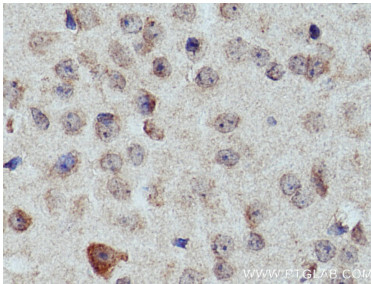
mouse liver mitochondria tissue were subjected to SDS PAGE followed by western blot with 16296-1-AP (GHITM antibody) at dilution of 1:300 incubated at room temperature for 1.5 hours.



Immunofluorescent analysis of (10% Formaldehyde) fixed HeLa cells using 16296-1-AP (GHITM antibody) at dilution of 1:50 and Alexa Fluor 488-conjugated AffiniPure Goat Anti-Rabbit IgG(H+L).



Immunohistochemical analysis of paraffin-embedded mouse brain tissue slide using 16296-1-AP (GHITM antibody) at dilution of 1:200 (under 10x lens). Heat mediated antigen retrieval with Tris-EDTA buffer (pH 9.0).



Immunohistochemical analysis of paraffin-embedded mouse brain tissue slide using 16296-1-AP (GHITM antibody) at dilution of 1:200 (under 40x lens). Heat mediated antigen retrieval with Tris-EDTA buffer (pH 9.0).