

Nur für Forschungszwecke

# FZR1/Cdh1 Polyklonaler Antikörper



Katalog-Nr.:16368-1-AP

Vorgestelltes Produkt

7 Publikationen

## Allgemeine Informationen

Katalog-Nr.:  
16368-1-AP

Größe:  
150ul, Konzentration: 500 µg/ml von  
Nanodrop und 220 µg/ml durch die  
Bradford-Methode mit BSA als  
Standard;

Wirt:  
Kaninchen

Isotyp:  
IgG

Immunogen Katalognummer:  
AG9201

GenBank-Zugangsnummer:  
BC013413

GeneID (NCBI):  
51343

Vollständiger Name:  
fizzy/cell division cycle 20 related 1  
(Drosophila)

Berechnete Masse:  
493 aa, 55 kDa

Beobachtete Masse:  
55 kDa

Reinigungsmethode:

Antigen-Affinitätsreinigung

Empfohlene Verdünnungen:

WB 1:500-1:2000  
IP 0.5-4.0 µg für IP und 1:500-1:1000  
für WB  
IHC 1:50-1:500  
IF 1:50-1:500

## Anwendungen

Geprüfte Anwendungen:

FC, IF, IHC, IP, WB, ELISA

In Publikationen genannte Anwendungen:

FC, IP, WB

Getestete Reaktivität:

Human, Maus, Ratte

Zitierte Arten:

Human, Maus

**Hinweis-IHC: Antigenmaskierung mit TE-Puffer pH 9,0 empfohlen. (\*) Wahlweise kann die Antigenmaskierung auch mit Citratpuffer pH 6,0 erfolgen.**

Positivkontrollen:

WB: HeLa-Zellen, C6-Zellen, HepG2-Zellen, Jurkat-Zellen, Mäuserzgewebe, Mauserzgewebe, NIH/3T3-Zellen

IP: Mäuserzgewebe,

IHC: humanes Lebergewebe, humanes Mammakarzinomgewebe

IF: HepG2-Zellen, HeLa-Zellen

## Hintergrundinformationen

FZR1 gene, also named as FYR, FZR and KIAA1242, has been previously shown to be mutated in lobular breast carcinomas. Direct evidence of FZR1 mutations triggering tumorigenesis has been investigated. FZR1 is a key regulator of ligase activity of the anaphase promoting complex/cyclosome (APC/C) which is playing vital role s in cell cycle progression. There are 7 WD-repeat domains in FZR1. Upon phosphorylation and dephosphorylation, it interacts with other components to modulate cell mitosis. This gene is different to E-cadherin (CDH1) which is an epithelial cell adhesion molecule. It has 55 kDa, 54 kDa and 45 kDa isoforms.

## Bemerkenswerte Veröffentlichungen

Verfasser	Pubmed ID	Journal	Anwendung
Changyin Zhou	34559563	Sci Adv	WB
Marie-Claude Perry	25246633	Mol Cell Biol	WB
Arielle N Valdez-Sinon	32434143	iScience	IP, WB

## Lagerung

Lagerungsbedingungen:

Bei -20°C lagern. Nach dem Versand ein Jahr lang stabil

Lagerungspuffer:

PBS mit 0.02% Natriumazid und 50% Glycerin pH 7.3.

Aliquotieren ist nicht notwendig bei -20°C Lagerung

\*\*\* 20ul-Größen enthalten 0.1% BSA

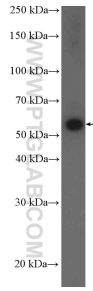
For technical support and original validation data for this product please contact:

T: 1 (888) 4PTGLAB (1-888-478-4522) (toll free in USA), or 1(312) 455-8498 (outside USA)

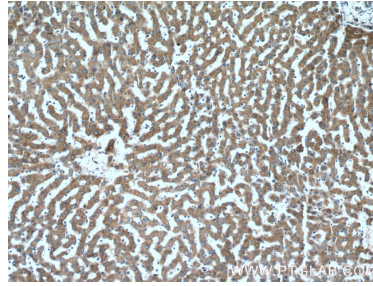
E: proteintech@ptglab.com  
W: ptglab.com

This product is exclusively available under Proteintech Group brand and is not available to purchase from any other manufacturer.

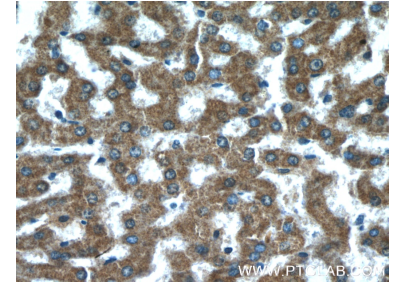
## Ausgewählte Validierungsdaten



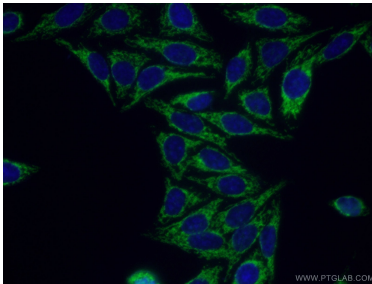
HeLa cells were subjected to SDS PAGE followed by western blot with 16368-1-AP (FZR1 Antibody) at dilution of 1:1000 incubated at room temperature for 1.5 hours.



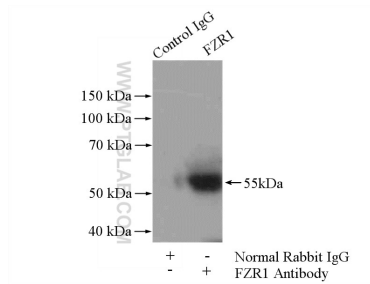
Immunohistochemical analysis of paraffin-embedded human liver tissue slide using 16368-1-AP (FZR1 antibody) at dilution of 1:200 (under 10x lens).



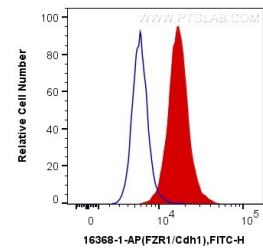
Immunohistochemical analysis of paraffin-embedded human liver tissue slide using 16368-1-AP (FZR1 antibody) at dilution of 1:200 (under 40x lens).



Immunofluorescent analysis of (-20°C Ethanol) fixed HepG2 cells using 16368-1-AP (FZR1 antibody) at dilution of 1:50 and Alexa Fluor 488-conjugated AffiniPure Goat Anti-Rabbit IgG(H+L).



IP Result of anti-FZR1 (IP:16368-1-AP, 4ug; Detection:16368-1-AP 1:500) with mouse heart tissue lysate 3200ug.



$1 \times 10^6$  HeLa cells were intracellularly stained with 0.2 ug Anti-Human FZR1/Cdh1 (16368-1-AP) and CoraLite®488-Conjugated AffiniPure Goat Anti-Rabbit IgG(H+L) at dilution 1:1000 (red), or 0.2 ug Control Antibody. Cells were fixed with 4% PFA and permeabilized with Flow Cytometry Perm Buffer (PF00011-C).