

Nur für Forschungszwecke

# NRF2, NFE2L2 Polyklonaler Antikörper



Katalog-Nr.:16396-1-AP

Vorgestelltes Produkt

1150 Publikationen

## Allgemeine Informationen

Katalog-Nr.:  
16396-1-AP

Größe:  
150ul , Konzentration: 700 µg/ml von  
Nanodrop;

Wirt:  
Kaninchen

Isotyp:  
IgG

Immunogen Katalognummer:  
AG9489

GenBank-Zugangsnummer:  
BC011558

GeneID (NCBI):  
4780

Vollständiger Name:  
nuclear factor (erythroid-derived 2)-  
like 2

Berechnete Masse:  
605 aa, 68 kDa

Beobachtete Masse:  
110 kDa, 68 kDa

Reinigungsmethode:

Antigen-Affinitätsreinigung

Empfohlene Verdünnungen:

WB 1:2000-1:12000

IP 0.5-4.0 ug für IP und 1:200-1:1000  
für WB

IHC 1:50-1:500

IF 1:50-1:500

## Anwendungen

Geprüfte Anwendungen:  
FC, IF, IHC, IP, WB, ELISA

In Publikationen genannte Anwendungen:  
ChIP, CoIP, IF, IHC, IP, WB

Getestete Reaktivität:  
Human, Maus, Ratte

Zitierte Arten:  
Affe, Hamster, Hausschwein, Huhn, Human, Hund,  
Maus, Rind, Ziege

**Hinweis-IHC: Antigenmaskierung mit TE-  
Puffer pH 9,0 empfohlen. (\*) Wahlweise  
kann die Antigenmaskierung auch mit  
Citratpuffer pH 6,0 erfolgen.**

Positivkontrollen:

WB : HepG2-Zellen, A549-Zellen, mit DMSO  
behandelte HeLa-Zellen

IP : Mausnierengewebe,

IHC : humanes Leberkarzinomgewebe, humanes  
Kolonkarzinomgewebe, humanes  
Mammakarzinomgewebe, humanes Nierengewebe,  
humanes Nierenzellkarzinomgewebe

IF : Maushirngewebe, HepG2-Zellen

## Hintergrundinformationen

NRF2, also named as NFE2L2, belongs to the bZIP family and CNC subfamily. It is a transcription activator that binds to antioxidant response (ARE) elements in the promoter regions of target genes. NRF2 is important for the coordinated up-regulation of genes in response to oxidative stress. It may be involved in the transcriptional activation of genes of the beta-globin cluster by mediating enhancer activity of hypersensitive site 2 of the beta-globin locus control region. Nrf2 is a key player in the regulation of genes encoding for many antioxidative response enzymes. The expression of NRF2 may be induced under oxidative stress (PMID:14567983). In lung cancer, Nrf2 activation in malignant cells has been associated with tumor progression and chemotherapy resistance (PMID:20534738). Identifying patients with abnormal NRF2 expression may be important for selection for chemotherapy in NSCLC. As new investigators break into the emerging field of Nrf2 research, confusion regarding the correct migratory pattern of Nrf2 is causing doubts about the accuracy and reproducibility of published results. This letter provides solid evidence that the actually observed molecular weight of Nrf2 is about 70kDa and 95-110 kDa. (PMID: 22703241).

## Bemerkenswerte Veröffentlichungen

Verfasser	Pubmed ID	Journal	Anwendung
Lin-Tao Xu	34601084	J Ethnopharmacol	WB
Noha A. Gouda	36290663	Antioxidants (Basel)	WB
Zhenmao Jia	36238566	Front Pharmacol	WB,IF

## Lagerung

Lagerungsbedingungen:

Bei -20°C lagern. Nach dem Versand ein Jahr lang stabil

Lagerungspuffer:

PBS mit 0.02% Natriumazid und 50% Glycerin pH 7.3.

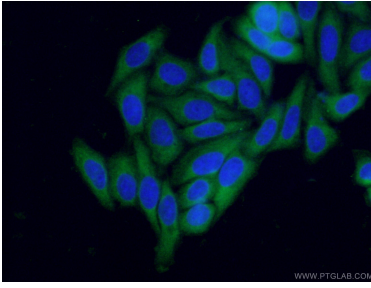
Aliquotieren ist nicht notwendig bei -20°C Lagerung

\*\*\* 20ul-Größen enthalten 0.1% BSA

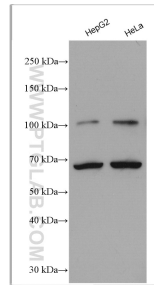
For technical support and original validation data for this product please contact:  
T: 1 (888) 4PTGLAB (1-888-478-4522) (toll free in USA), or 1(312) 455-8498 (outside USA)  
E: proteintech@ptglab.com  
W: ptglab.com

This product is exclusively available under Proteintech Group brand and is not available to purchase from any other manufacturer.

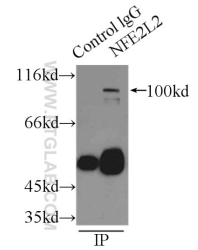
## Ausgewählte Validierungsdaten



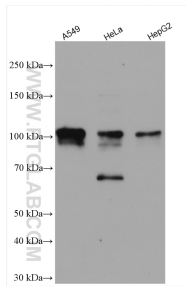
Immunofluorescent analysis of (-20°C Ethanol) fixed HepG2 cells using 16396-1-AP (NRF2, NFE2L2 antibody) at dilution of 1:50 and CoraLite488-Conjugated AffiniPure Goat Anti-Rabbit IgG(H+L).



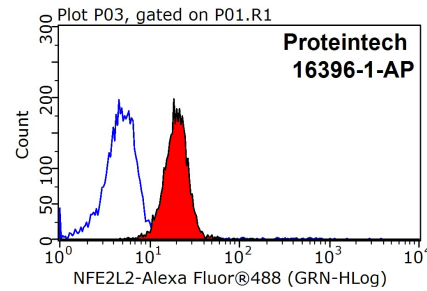
Various lysates were subjected to SDS PAGE followed by western blot with 16396-1-AP (NRF2, NFE2L2 antibody) at dilution of 1:6000 incubated at room temperature for 1.5 hours.



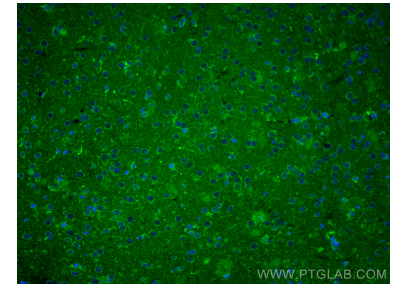
IP Result of anti-NRF2, NFE2L2 (IP:16396-1-AP, 3ug; Detection:16396-1-AP 1:300) with mouse kidney tissue lysate 4000ug.



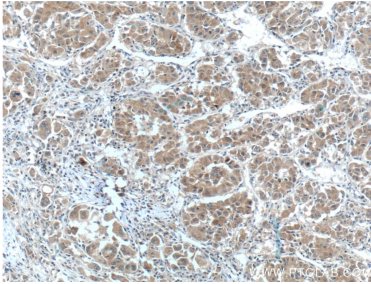
Various lysates were subjected to SDS PAGE followed by western blot with 16396-1-AP (NRF2, NFE2L2 antibody) at dilution of 1:10000 incubated at room temperature for 1.5 hours.



1X10<sup>6</sup> MCF-7 cells were stained with 0.2ug NRF2, NFE2L2 antibody (16396-1-AP, red) and control antibody (blue). Fixed with 90% MeOH blocked with 3% BSA (30 min). Alexa Fluor 488-conjugated AffiniPure Goat Anti-Rabbit IgG(H+L) with dilution 1:1500.



Immunofluorescent analysis of (4% PFA) fixed mouse brain tissue using NRF2, NFE2L2 antibody (16396-1-AP) at dilution of 1:200 and CoraLite@488-Conjugated AffiniPure Goat Anti-Rabbit IgG(H+L).



Immunohistochemical analysis of paraffin-embedded human liver cancer tissue slide using 16396-1-AP (NRF2, NFE2L2 Antibody) at dilution of 1:200 (under 10x lens). Heat mediated antigen retrieval with Tris-EDTA buffer (pH 9.0).