

Allgemeine Informationen

Katalog-Nr.:
16420-1-AP

Größe:
150ul , Konzentration: 350 µg/ml von
Nanodrop und 333 µg/ml durch die
Bradford-Methode mit BSA als
Standard;

Wirt:
Kaninchen

Isotyp:
IgG

Immunogen Katalognummer:
AG9612

GenBank-Zugangsnummer:
BC017338

GeneID (NCBI):
2517

Vollständiger Name:
fucosidase, alpha-L- 1, tissue

Berechnete Masse:
461 aa, 53 kDa

Beobachtete Masse:
50-56 kDa

Reinigungsmethode:

Antigen-Affinitätsreinigung

Empfohlene Verdünnungen:

WB 1:500-1:1000

IHC 1:50-1:500

Anwendungen

Geprüfte Anwendungen:

IHC, WB,ELISA

In Publikationen genannte Anwendungen:

IHC, WB

Getestete Reaktivität:

Human, Maus, Ratte

Zitierte Arten:

Human

Hinweis-IHC: Antigendemaskierung mit TE-Puffer pH 9,0 empfohlen. (*) Wahlweise kann die Antigendemaskierung auch mit Citratpuffer pH 6,0 erfolgen.

Positivkontrollen:

WB : Mauslebergewebe, COLO 320-Zellen

IHC : humanes Hodengewebe, humanes
Leberkarzinomgewebe

Hintergrundinformationen

FUCA1(a-L-Fucosidase) is a lysosomal glycosidase which is ubiquitous in eukaryotic cells. This enzyme is usually found as a soluble component of the lysosome and functions as an acid hydrolase in the degradation of numerous and diverse fucoglycoconjugates. The mammalian a-L-fucosidases are relatively large, multisubunit glycoproteins which exist in multiple molecular isoforms. This enzyme may have a role in sperm-egg interactions in the reproductive tract of the female rat. There is a precursor 54 kDa form of rat sperm fucosidase which is processed to a mature 52 kDa form of the enzyme (PMID:8836125). This protein from rat epididymis is a tetramer of 210-220 kDa, made up by two pairs of subunits of 47 and 60 kDa, and the one from human seminal plasma exists in different oligomeric forms, that is, as a dimer, as a tetramer, and as a hexamer made up of a single subunit of 56-57 kDa (PMID:16736526).

Bemerkenswerte Veröffentlichungen

Verfasser	Pubmed ID	Journal	Anwendung
Giancarlo Vecchio	28404918	Oncotarget	WB,IHC
Serena Bonin	29632639	Oncotarget	WB,IHC
Shoko Ishida	30729618	Pathol Int	IHC

Lagerung

Lagerungsbedingungen:

Bei -20°C lagern. Nach dem Versand ein Jahr lang stabil

Lagerungspuffer:

PBS mit 0.02% Natriumazid und 50% Glycerin pH 7.3.

Aliquotieren ist nicht notwendig bei -20°C Lagerung

***** 20ul-Größen enthalten 0.1% BSA**

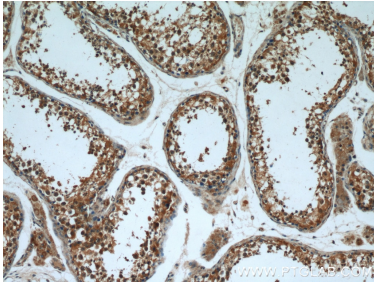
For technical support and original validation data for this product please contact:

T: 1 (888) 4PTGLAB (1-888-478-4522) (toll free
in USA), or 1(312) 455-8498 (outside USA)

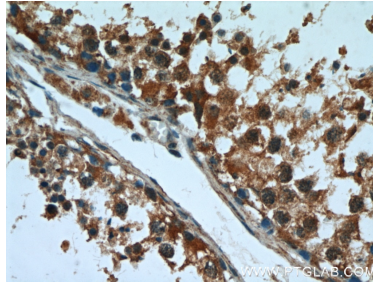
E: proteintech@ptglab.com
W: ptglab.com

This product is exclusively available under Proteintech Group brand and is not available to purchase from any other manufacturer.

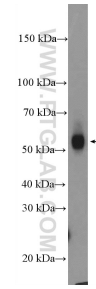
Ausgewählte Validierungsdaten



Immunohistochemical analysis of paraffin-embedded human testis using 16420-1-AP (FUCA1 antibody) at dilution of 1:50 (under 10x lens).



Immunohistochemical analysis of paraffin-embedded human testis using 16420-1-AP (FUCA1 antibody) at dilution of 1:50 (under 40x lens).



mouse liver tissue were subjected to SDS PAGE followed by western blot with 16420-1-AP (FUCA1 Antibody) at dilution of 1:600 incubated at room temperature for 1.5 hours.