

Allgemeine Informationen

Katalog-Nr.:
16439-1-AP

Größe:
150ul, Konzentration: 900 µg/ml von 5004 Nanodrop und 447 µg/ml durch die Bradford-Methode mit BSA als Standard;

Wirt:
Kaninchen

Isotyp:
IgG

Immunogen Katalognummer:
AG9758

GenBank-Zugangsnummer:
BC026238

GeneID (NCBI):
5004

Vollständiger Name:
orosomuroid 1

Berechnete Masse:
201 aa, 24 kDa

Beobachtete Masse:
40-47 kDa

Reinigungsmethode:

Antigen-Affinitätsreinigung

Empfohlene Verdünnungen:

WB 1:500-1:2000

IP 0.5-4.0 µg für IP und 1:200-1:1000 für WB

IHC 1:50-1:500

Anwendungen

Geprüfte Anwendungen:

FC, IHC, IP, WB, ELISA

In Publikationen genannte Anwendungen:

IF, IHC, WB

Getestete Reaktivität:

Human, Maus, Ratte

Zitierte Arten:

Human, Maus

Hinweis-IHC: Antigenmaskierung mit TE-Puffer pH 9,0 empfohlen. (*) Wahlweise kann die Antigenmaskierung auch mit Citratpuffer pH 6,0 erfolgen.

Positivkontrollen:

WB: Mauslebergewebe, Maus-Blasengewebe

IP: humanes Plasmagewebe,

IHC: humanes Lebergewebe, humanes Leberkarzinomgewebe

Hintergrundinformationen

Alpha-1-acid glycoprotein 1 (AGP1), also called orosomuroid-1 (ORM1), is a glycoprotein synthesized mostly by hepatocytes and present in human plasma. ORM1 is an acute-phase reactant protein controlled by glucocorticoids, interleukin-1 and interleukin-6, and increase up to 5-50 times upon infection and/or inflammation. Anti-apoptotic effect and role as immunomodulator of ORM have been reported. ORM is an important carrier for synthetic drugs and influences their distribution and availability in the body. This antibody recognizes a band about 44 kDa in human plasma which may be due to the glycosylation of ORM1 or the dimer formation of the protein.

Bemerkenswerte Veröffentlichungen

Verfasser	Pubmed ID	Journal	Anwendung
Mehrpouya B Mobin	27665711	Nat Commun	WB
Bing Zhou	36050503	Nat Metab	WB
Luo Qiong	34654351	Bioengineered	IHC

Lagerung

Lagerungsbedingungen:

Bei -20°C lagern. Nach dem Versand ein Jahr lang stabil

Lagerungspuffer:

PBS mit 0.02% Natriumazid und 50% Glycerin pH 7.3.

Aliquotieren ist nicht notwendig bei -20°C Lagerung

***** 20ul-Größen enthalten 0.1% BSA**

For technical support and original validation data for this product please contact:

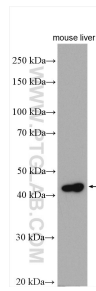
T: 1 (888) 4PTGLAB (1-888-478-4522) (toll free in USA), or 1(312) 455-8498 (outside USA)

E: proteintech@ptglab.com

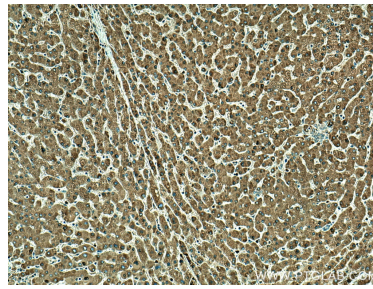
W: ptglab.com

This product is exclusively available under Proteintech Group brand and is not available to purchase from any other manufacturer.

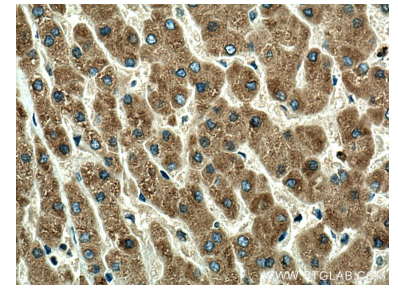
Ausgewählte Validierungsdaten



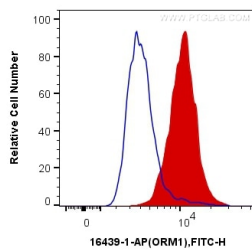
mouse liver tissue were subjected to SDS PAGE followed by western blot with 16439-1-AP (ORM1 antibody) at dilution of 1:1000 incubated at room temperature for 1.5 hours.



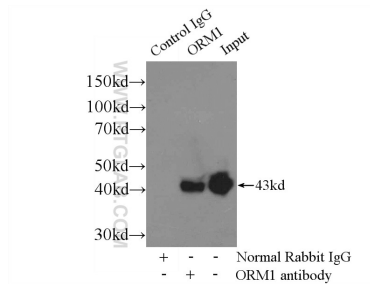
Immunohistochemical analysis of paraffin-embedded human liver tissue slide using 16439-1-AP (ORM1 antibody) at dilution of 1:200 (under 10x lens). Heat mediated antigen retrieval with Tris-EDTA buffer (pH 9.0).



Immunohistochemical analysis of paraffin-embedded human liver tissue slide using 16439-1-AP (ORM1 antibody) at dilution of 1:200 (under 40x lens). Heat mediated antigen retrieval with Tris-EDTA buffer (pH 9.0).



1X10⁶ HepG2 cells were intracellularly stained with 0.4 ug Anti-Human ORM1 (16439-1-AP) and CoraLite@488-Conjugated AffiniPure Goat Anti-Rabbit IgG(H+L) at dilution 1:1000 (red), or 0.4 ug Control Antibody. Cells were fixed with 4% PFA and permeabilized with Flow Cytometry Perm Buffer (PF00011-C).



IP Result of anti-ORM1 (IP:16439-1-AP, 3ug; Detection:16439-1-AP 1:300) with human plasma lysate 100ug.