

Allgemeine Informationen

Katalog-Nr.:
16462-1-AP

Größe:
150ul, Konzentration: 220 µg/ml von Nanodrop und 220 µg/ml durch die Bradford-Methode mit BSA als Standard;

Wirt:
Kaninchen

Isotyp:
IgG

Immunogen Katalognummer:
AG9536

GenBank-Zugangsnummer:
BC014965

GeneID (NCBI):
7507

Vollständiger Name:
xeroderma pigmentosum, complementation group A

Berechnete Masse:
374aa,42 kDa; 273aa,31 kDa

Beobachtete Masse:
40 kDa

Reinigungsmethode:

Antigen-Affinitätsreinigung

Empfohlene Verdünnungen:

WB 1:200-1:1000

IP 0.5-4.0 µg für IP und 1:200-1:1000 für WB

IF 1:50-1:500

Anwendungen

Geprüfte Anwendungen:

IF, IP, WB, ELISA

In Publikationen genannte Anwendungen:

IF, WB

Getestete Reaktivität:

Human, Maus

Zitierte Arten:

Human, Maus

Positivkontrollen:

WB : L02-Zellen, HeLa-Zellen, MCF-7-Zellen

IP : L02-Zellen,

IF : HepG2-Zellen,

Hintergrundinformationen

XPA, also named as DNA repair protein complementing XP-A cells, is a 272 amino acid protein, which belongs to the XPA family. XPA is expressed in various cell lines and in skin fibroblasts. XPA is involved in DNA excision repair. Initiates repair by binding to damaged sites with various affinities, depending on the photoproduct and the transcriptional state of the region. XPA is required for UV-induced CHEK1 phosphorylation and the recruitment of CEP164 to cyclobutane pyrimidine dimers (CPD), sites of DNA damage after UV irradiation. The calculated molecular weight of XPA is 31 kDa, but modified XPA protein is about 40 kDa (PMID: 17848622).

Bemerkenswerte Veröffentlichungen

Verfasser	Pubmed ID	Journal	Anwendung
Li-Ming Tan	31772670	J Cancer	WB
Zhe Yang	36229075	Genes Dev	WB
Jiaxin Chen	36415059	Adv Healthc Mater	WB,IF

Lagerung

Lagerungsbedingungen:

Bei -20°C lagern. Nach dem Versand ein Jahr lang stabil

Lagerungspuffer:

PBS mit 0.02% Natriumazid und 50% Glycerin pH 7.3.

Aliquotieren ist nicht notwendig bei -20°C Lagerung

***** 20ul-Größen enthalten 0.1% BSA**

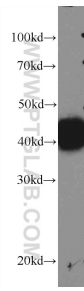
For technical support and original validation data for this product please contact:

T: 1 (888) 4PTGLAB (1-888-478-4522) (toll free in USA), or 1(312) 455-8498 (outside USA)

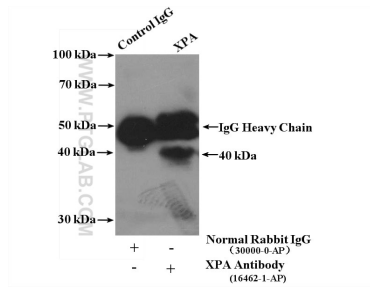
E: proteintech@ptglab.com
W: ptglab.com

This product is exclusively available under Proteintech Group brand and is not available to purchase from any other manufacturer.

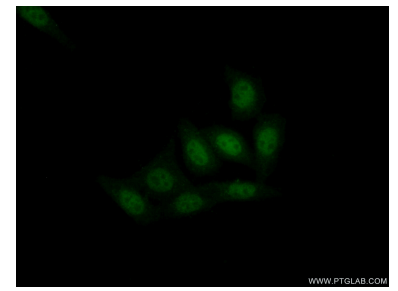
Ausgewählte Validierungsdaten



L02 cells were subjected to SDS PAGE followed by western blot with 16462-1-AP (XPA Antibody) at dilution of 1:300 incubated at room temperature for 1.5 hours.



IP result of anti-XPA (IP:16462-1-AP, 4ug; Detection:16462-1-AP 1:300) with L02 cells lysate 3000 ug.



Immunofluorescent analysis of (10% Formaldehyde) fixed HepG2 cells using 16462-1-AP (XPA antibody) at dilution of 1:50 and Alexa Fluor 488-conjugated AffiniPure Goat Anti-Rabbit IgG(H+L).