

Nur für Forschungszwecke

CDC25C Polyklonaler Antikörper

Katalog-Nr.:16485-1-AP

Vorgestelltes Produkt

22 Publikationen



Allgemeine Informationen

Katalog-Nr.:
16485-1-AP

Größe:
150ul, Konzentration: 900 µg/ml von
Nanodrop und 367 µg/ml durch die
Bradford-Methode mit BSA als
Standard;

Wirt:
Kaninchen

Isotyp:
IgG

Immunogen Katalognummer:
AG9607

GenBank-Zugangsnummer:
BC019089

GeneID (NCBI):
995

Vollständiger Name:
cell division cycle 25 homolog C (S.
pombe)

Berechnete Masse:
473 aa, 53 kDa

Beobachtete Masse:
53 kDa

Reinigungsmethode:

Antigen-Affinitätsreinigung

Empfohlene Verdünnungen:

WB 1:2000-1:16000
IP 0.5-4.0 µg für IP und 1:500-1:2000
für WB
IHC 1:50-1:500

Anwendungen

Geprüfte Anwendungen:

FC, IHC, IP, WB, ELISA

In Publikationen genannte Anwendungen:

IHC, IP, WB

Getestete Reaktivität:

Human

Zitierte Arten:

Human, Maus

Hinweis-IHC: Antigendemaskierung mit TE-Puffer pH 9,0 empfohlen. (*) Wahlweise kann die Antigendemaskierung auch mit Citratpuffer pH 6,0 erfolgen.

Positivkontrollen:

WB : HEK-293-Zellen, HeLa-Zellen, HepG2-Zellen, K-562-Zellen, Raji-Zellen

IP : K-562-Zellen,

IHC : humanes Kolonkarzinomgewebe, humanes Leberkarzinomgewebe

Hintergrundinformationen

The cell division cycle 25 (CDC25) family of proteins are highly conserved dual specificity phosphatases that activate cyclin-dependent kinase (CDK) complexes, which in turn regulate progression through the cell division cycle. CDC25C (cell division cycle 25 homolog C) is one of the 3 isoforms of CDC25 in mammalian cells. It is present in the cytoplasm of asynchronously growing human cells (PMID:10330186). And it may be phosphorylated by its own substrate, an active cdc2-cyclin B complex, to create an autoactivation loop (PMID:7937793). It can be hyperphosphorylated to get the active form of 70 kDa (PMID:18296513). CDC25C has some isoforms with molecular mass of 46-53 kDa.

Bemerkenswerte Veröffentlichungen

Verfasser	Pubmed ID	Journal	Anwendung
Hui-Ting Liu	34667869	Laryngoscope Investig Otolaryngol	WB
Huan Ma	33573708	Oncol Res	WB
Yonglong Zhang	31599189	Cell Cycle	WB

Lagerung

Lagerungsbedingungen:

Bei -20°C lagern. Nach dem Versand ein Jahr lang stabil

Lagerungspuffer:

PBS mit 0.02% Natriumazid und 50% Glycerin pH 7.3.

Aliquotieren ist nicht notwendig bei -20°C Lagerung

*** 20ul-Größen enthalten 0.1% BSA

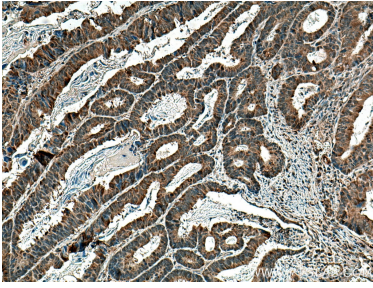
For technical support and original validation data for this product please contact:

T: 1 (888) 4PTGLAB (1-888-478-4522) (toll free in USA), or 1(312) 455-8498 (outside USA)

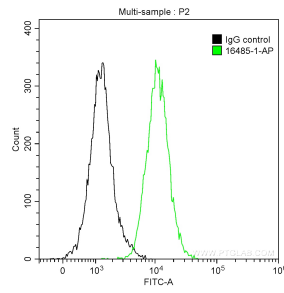
E: proteintech@ptglab.com
W: ptglab.com

This product is exclusively available under Proteintech Group brand and is not available to purchase from any other manufacturer.

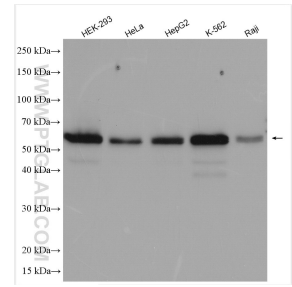
Ausgewählte Validierungsdaten



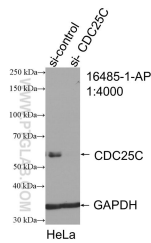
Immunohistochemical analysis of paraffin-embedded human colon cancer tissue slide using 16485-1-AP (CDC25C antibody) at dilution of 1:200 (under 10x lens). Heat mediated antigen retrieval with Tris-EDTA buffer (pH 9.0).



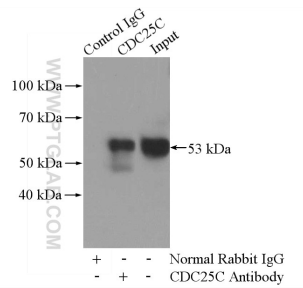
1×10^6 K-562 cells were intracellularly stained with 0.2 μ g Anti-Human CDC25C (16485-1-AP) and CoraLite®488-Conjugated AffiniPure Goat Anti-Rabbit IgG(H+L) at dilution 1:1000 (green), and 0.2 μ g Control Antibody. Cells were fixed with 90% MeOH.



Various lysates were subjected to SDS PAGE followed by western blot with 16485-1-AP (CDC25C antibody) at dilution of 1:8000 incubated at room temperature for 1.5 hours.



WB result of CDC25C antibody (16485-1-AP; 1:4000; incubated at room temperature for 1.5 hours) with sh-Control and sh-CDC25C transfected HeLa cells.



IP Result of anti-CDC25C (IP:16485-1-AP, 4 μ g; Detection:16485-1-AP 1:1000) with K-562 cells lysate 3600 μ g.