

## Allgemeine Informationen

|   |  |   |
|---|--|---|
| <b>Katalog-Nr.:</b><br>16520-1-AP                               | <b>GenBank-Zugangsnummer:</b><br>BC032116  | <b>Reinigungsmethode:</b><br>Antigen-Affinitätsreinigung  |
| <b>Größe:</b><br>150ul , Konzentration: 700 µg/ml von Nanodrop; | <b>GeneID (NCBI):</b><br>1674              | <b>Empfohlene Verdünnungen:</b><br>WB 1:5000-1:50000<br>IP 0.5-4.0 ug für IP und 1:1000-1:6000 für WB |
| <b>Wirt:</b><br>Kaninchen                                       | <b>Vollständiger Name:</b><br>desmin       | <b>IHC 1:500-1:2000</b><br><b>IF 1:200-1:800</b>  |
| <b>Isotyp:</b><br>IgG   | <b>Berechnete Masse:</b><br>470 aa, 54 kDa |   |
| <b>Immunogen Katalognummer:</b><br>AG9742                       | <b>Beobachtete Masse:</b><br>52-53 kDa     |   |

## Anwendungen

**Geprüfte Anwendungen:**  
FC, IF, IHC, IP, WB, ELISA

**In Publikationen genannte Anwendungen:**  
IF, IHC, IP, WB

**Getestete Reaktivität:**  
Human, Maus, Ratte

**Zitierte Arten:**  
Human, Maus, Ratte

**Hinweis-IHC: Antigendemaskierung mit TE-Puffer pH 9,0 empfohlen. (\*) Wahlweise kann die Antigendemaskierung auch mit Citratpuffer pH 6,0 erfolgen.**

**Positivkontrollen:**

**WB:** C2C12-Zellen, humanes Herzgewebe, Mausherzgewebe, Rattenherzgewebe

**IP:** Mausherzgewebe,

**IHC:** humanes Herzgewebe, humanes Appendix-Gewebe, humanes Kolongewebe, humanes Plazenta-Gewebe, humanes Skelettmuskelgewebe, humanes Uterusmyomgewebe

**IF:** C2C12-Zellen, Mausherzgewebe, Rattenherzgewebe

## Hintergrundinformationen

Desmin is the main intermediate filament protein in skeletal and cardiac muscle cells and is essential for both the structural integrity and the survival of muscle cells. As an abundant muscle-specific protein, desmin has been widely used as a marker of muscle derived tumors. Anti-desmin is also valuable in the differential diagnosis of tumors of uncertain origin.

## Bemerkenswerte Veröffentlichungen

| Verfasser  | Pubmed ID | Journal                     | Anwendung |
|------------|-----------|-----------------------------|-----------|
| Hejie Wang | 36178582  | In Vitro Cell Dev Biol Anim | WB        |
| Shuai Yu   | 34616727  | Front Cell Dev Biol         | WB        |
| Qing Ye    | 34734004  | Ann Transl Med              | IF        |

## Lagerung

**Lagerungsbedingungen:**

Bei -20°C lagern. Nach dem Versand ein Jahr lang stabil

**Lagerungspuffer:**

PBS mit 0.02% Natriumazid und 50% Glycerin pH 7.3.

Aliquotieren ist nicht notwendig bei -20°C Lagerung

**\*\*\* 20ul-Größen enthalten 0.1% BSA**

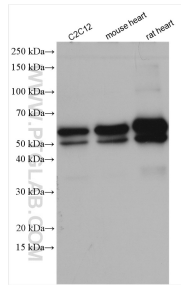
For technical support and original validation data for this product please contact:

T: 1 (888) 4PTGLAB (1-888-478-4522) (toll free in USA), or 1(312) 455-8498 (outside USA)

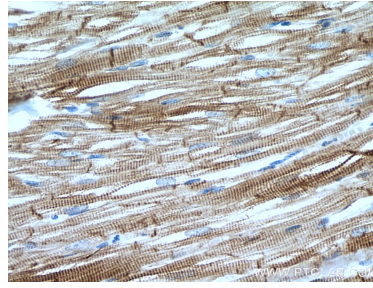
E: [proteintech@ptglab.com](mailto:proteintech@ptglab.com)  
W: [ptglab.com](http://ptglab.com)

**This product is exclusively available under Proteintech Group brand and is not available to purchase from any other manufacturer.**

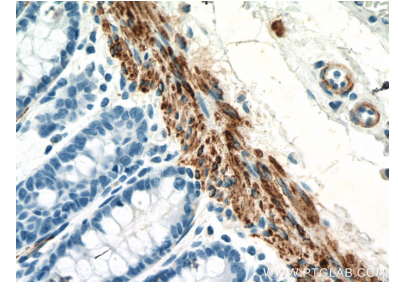
## Ausgewählte Validierungsdaten



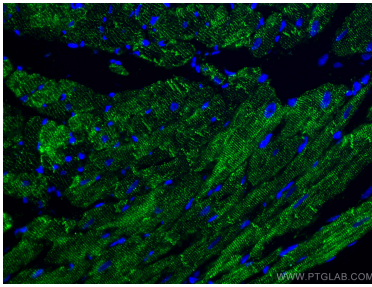
Various lysates were subjected to SDS PAGE followed by western blot with 16520-1-AP (Desmin antibody) at dilution of 1:20000 incubated at room temperature for 1.5 hours.



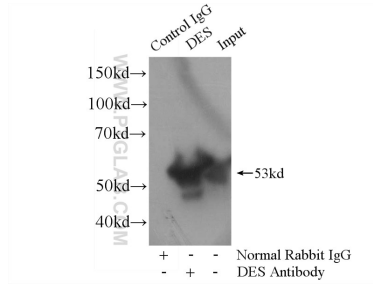
Immunohistochemical analysis of paraffin-embedded human heart tissue slide using 16520-1-AP (Desmin antibody) at dilution of 1:1000 (under 40x lens). Heat mediated antigen retrieval with Tris-EDTA buffer (pH 9.0).



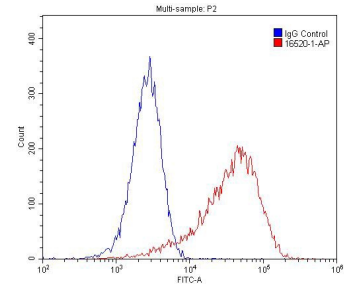
Immunohistochemical analysis of paraffin-embedded human colon tissue slide using 16520-1-AP (Desmin antibody) at dilution of 1:12800 (under 40x lens). Heat mediated antigen retrieval with Tris-EDTA buffer (pH 9.0).



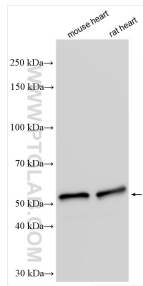
Immunofluorescent analysis of (4% PFA) fixed rat heart tissue using Desmin antibody (16520-1-AP) at dilution of 1:200 and CoralLite®488-Conjugated AffiniPure Goat Anti-Rabbit IgG(H+L).



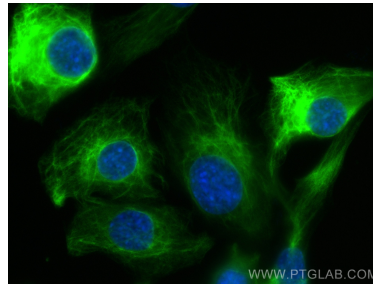
IP Result of anti-Desmin (IP:16520-1-AP, 4ug; Detection:16520-1-AP 1:3000) with mouse heart tissue lysate 8000ug.



$1 \times 10^6$  C2C12 cell were stained with 0.2ug Desmin antibody (16520-1-AP, red) and control antibody (blue). Alexa Fluor 488-conjugated AffiniPure Goat Anti-Rabbit IgG(H+L) with dilution 1:1500. Cells were fixed with 4% PFA and permeabilized with 0.1% Triton X-100.



Various lysates were subjected to SDS PAGE followed by western blot with 16520-1-AP (Desmin antibody) at dilution of 1:80000 incubated at room temperature for 1.5 hours.



Immunofluorescent analysis of (-20°C Methanol) fixed C2C12 cells using Desmin antibody (16520-1-AP) at dilution of 1:400 and CoralLite®488-Conjugated AffiniPure Goat Anti-Rabbit IgG(H+L).