

Nur für Forschungszwecke

Fetuin-A Polyklonaler Antikörper

Katalog-Nr.:16571-1-AP

4 Publikationen



Allgemeine Informationen

Katalog-Nr.: 16571-1-AP	GenBank-Zugangsnummer: BC048198	Reinigungsmethode: Antigen-Affinitätsreinigung
Größe: 150ul , Konzentration: 600 µg/ml von Nanodrop und 260 µg/ml durch die Bradford-Methode mit BSA als Standard;	GeneID (NCBI): 197	Empfohlene Verdünnungen: WB 1:500-1:1000 IHC 1:50-1:500
Wirt: Kaninchen	Vollständiger Name: alpha-2-HS-glycoprotein	
Isotyp: IgG	Berechnete Masse: 367 aa, 39 kDa	
Immunogen Katalognummer: AG9853	Beobachtete Masse: 58 kDa	

Anwendungen

Geprüfte Anwendungen: IHC, WB,ELISA	Positivkontrollen: WB : humanes Lebergewebe, humanes Herzgewebe IHC : humanes Lebergewebe,
In Publikationen genannte Anwendungen: IHC, WB	
Getestete Reaktivität: Human	
Zitierte Arten: Human, Plasmodium Falciparum	
Hinweis-IHC: Antigendemaskierung mit TE-Puffer pH 9,0 empfohlen. (*) Wahlweise kann die Antigendemaskierung auch mit Citratpuffer pH 6,0 erfolgen.	

Hintergrundinformationen

Fetuin-A, also named as Alpha2-HS glycoprotein (AHSG), is a member of cystatin superfamily of protease inhibitors. It is a highly expressed glycoprotein in various fetal tissues whereas it is mainly expressed by the liver in adults. Fetuin A, an extracellular inhibitor of transforming growth factor β , is a profibrogenic stimulus in liver disease. Circulating fetuin-A may be a beneficial serum biomarker in the detection of liver and vascular fibrosis progression in patients with non-alcoholic fatty liver disease. It is also involved in several functions, such as endocytosis, brain development and the formation of bone tissue. Fetuin-A exerts its effects on the cardiovascular system by two different mechanisms. On the one hand it inhibits insulin signaling and induces insulin resistance contributing to the onset of atherosclerosis and on the other hand it inhibits calcium deposition and protects from vascular calcification.

Bemerkenswerte Veröffentlichungen

Verfasser	Pubmed ID	Journal	Anwendung
Yufei Dong	35746836	Bioengineered	IHC
Xiao Lin	33585452	Front Cell Dev Biol	WB
J Song	33892138	Osteoarthritis Cartilage	IHC, WB

Lagerung

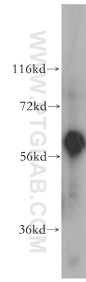
Lagerungsbedingungen:
Bei -20°C lagern. Nach dem Versand ein Jahr lang stabil
Lagerungspuffer:
PBS mit 0.02% Natriumazid und 50% Glycerin pH 7.3.
Aliquotieren ist nicht notwendig bei -20°C Lagerung

*** 20ul-Größen enthalten 0.1% BSA

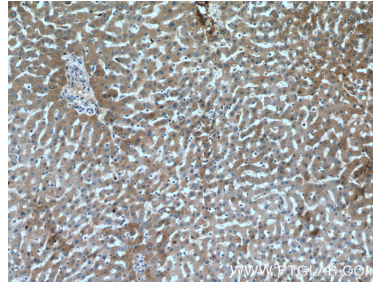
For technical support and original validation data for this product please contact:
T: 1 (888) 4PTGLAB (1-888-478-4522) (toll free in USA), or 1(312) 455-8498 (outside USA)
E: proteintech@ptglab.com
W: ptglab.com

This product is exclusively available under Proteintech Group brand and is not available to purchase from any other manufacturer.

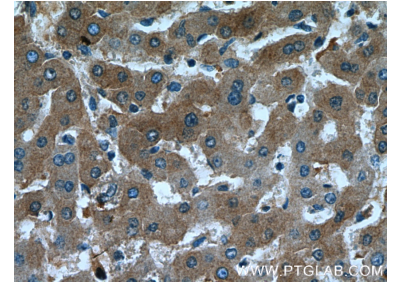
Ausgewählte Validierungsdaten



human liver tissue were subjected to SDS PAGE followed by western blot with 16571-1-AP (Fetuin-A antibody) at dilution of 1:500 incubated at room temperature for 1.5 hours.



Immunohistochemical analysis of paraffin-embedded human liver tissue slide using 16571-1-AP (Fetuin-A antibody at dilution of 1:200 (under 10x lens).



Immunohistochemical analysis of paraffin-embedded human liver tissue slide using 16571-1-AP (Fetuin-A antibody at dilution of 1:200 (under 40x lens).