

Nur für Forschungszwecke

Cytokeratin 4 Polyklonaler Antikörper



Katalog-Nr.: 16572-1-AP

5 Publikationen

Allgemeine Informationen

Katalog-Nr.: 16572-1-AP	GenBank-Zugangsnummer: BC042174	Reinigungsmethode: Antigen-Affinitätsreinigung
Größe: 150ul, Konzentration: 450 µg/ml von Nanodrop und 253 µg/ml durch die Bradford-Methode mit BSA als Standard;	GeneID (NCBI): 3851	Empfohlene Verdünnungen: WB 1:500-1:1000 IHC 1:50-1:500 IF 1:200-1:800
Wirt: Kaninchen	Vollständiger Name: keratin 4	
Isotyp: IgG	Berechnete Masse: 534 aa, 57 kDa	
Immunogen Katalognummer: AG9854	Beobachtete Masse: 57 kDa	

Anwendungen

Geprüfte Anwendungen: FC, IF, IHC, WB, ELISA	Positivkontrollen: WB : A431-Zellen, humanes Blasengewebe IHC : humanes Zervixkarzinomgewebe, IF : A431-Zellen,
In Publikationen genannte Anwendungen: IF, IHC, WB	
Getestete Reaktivität: Human	
Zitierte Arten: Human, Maus	

Hinweis-IHC: Antigenmaskierung mit TE-Puffer pH 9,0 empfohlen. (*) Wahlweise kann die Antigenmaskierung auch mit Citratpuffer pH 6,0 erfolgen.

Hintergrundinformationen

Keratins are a large family of proteins that form the intermediate filament cytoskeleton of epithelial cells, which are classified into two major sequence types. Type I keratins are a group of acidic intermediate filament proteins, including K9-K23, and the hair keratins Ha1-Ha8. Type II keratins are the basic or neutral counterparts to the acidic type I keratins, including K1-K8, and the hair keratins, Hb1-Hb6. Keratin 4 is a type II cyokeratins. It is specifically found in differentiated layers of the mucosal and esophageal epithelia together with keratin 13.

Bemerkenswerte Veröffentlichungen

Verfasser	Pubmed ID	Journal	Anwendung
Sandra Ruiz García	31558434	Development	IF
Ziv Schwartz	31473371	Ann Diagn Pathol	IHC
Lindsey W Plasschaert	30069046	Nature	IF

Lagerung

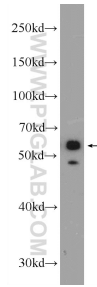
Lagerungsbedingungen:
Bei -20°C lagern. Nach dem Versand ein Jahr lang stabil
Lagerungspuffer:
PBS mit 0.02% Natriumazid und 50% Glycerin pH 7.3.
Aliquotieren ist nicht notwendig bei -20°C Lagerung

*** 20ul-Größen enthalten 0.1% BSA

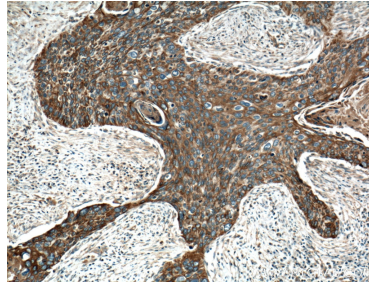
For technical support and original validation data for this product please contact:
T: 1 (888) 4PTGLAB (1-888-478-4522) (toll free in USA), or 1(312) 455-8498 (outside USA)
E: proteintech@ptglab.com
W: ptglab.com

This product is exclusively available under Proteintech Group brand and is not available to purchase from any other manufacturer.

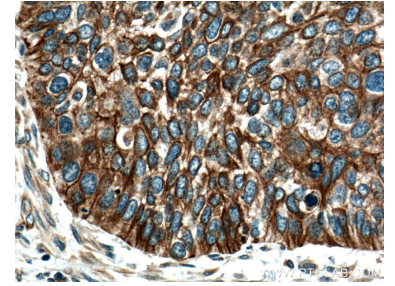
Ausgewählte Validierungsdaten



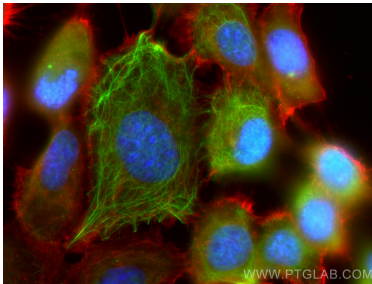
A431 cells were subjected to SDS PAGE followed by western blot with 16572-1-AP (Cytokeratin 4 antibody at dilution of 1:600 incubated at room temperature for 1.5 hours.



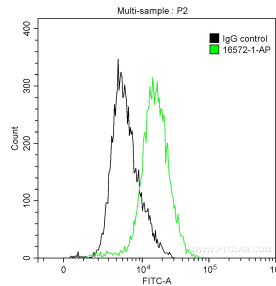
Immunohistochemical analysis of paraffin-embedded human cervical cancer tissue slide using 16572-1-AP (Cytokeratin 4 antibody at dilution of 1:200 (under 10x lens). Heat mediated antigen retrieval with Tris-EDTA buffer (pH 9.0).



Immunohistochemical analysis of paraffin-embedded human cervical cancer tissue slide using 16572-1-AP (Cytokeratin 4 antibody at dilution of 1:200 (under 40x lens). Heat mediated antigen retrieval with Tris-EDTA buffer (pH 9.0).



Immunofluorescent analysis of (-20°C Methanol) fixed A431 cells using Cytokeratin 4 antibody (16572-1-AP) at dilution of 1:400 and CoraLite@488-Conjugated AffiniPure Goat Anti-Rabbit IgG(H+L), CoraLite@594 Beta Actin antibody (CL594-66009, Clone: 2D4H5, red).



1x10⁶ HeLa cells were stained with 0.2 ug Anti-Human Cytokeratin 4 (16572-1-AP) and CoraLite@488-Conjugated AffiniPure Goat Anti-Rabbit IgG(H+L) at dilution 1:1000 (green), and 0.2 ug Control Antibody. Cells were fixed with 90% MeOH.