

Allgemeine Informationen

Katalog-Nr.: 16593-1-AP	GenBank-Zugangsnummer: BC008381	Reinigungsmethode: Antigen-Affinitätsreinigung
Größe: 150ul , Konzentration: 400 µg/ml von Nanodrop und 207 µg/ml durch die Bradford-Methode mit BSA als Standard;	GeneID (NCBI): 3612	Empfohlene Verdünnungen: WB 1:1000-1:4000 IHC 1:20-1:200 IF 1:10-1:100
Wirt: Kaninchen	Vollständiger Name: inositol(myo)-1(or 4)- monophosphatase 1	
Isotyp: IgG	Berechnete Masse: 277 aa, 30 kDa	
Immunogen Katalognummer: AG9632	Beobachtete Masse: 30 kDa	

Anwendungen

Geprüfte Anwendungen: IF, IHC, WB, ELISA	Positivkontrollen:
Getestete Reaktivität: Human, Maus, Ratte	WB : Rattennierengewebe, humanes Hirngewebe, humanes Nierengewebe, Mausnierengewebe
Hinweis-IHC: Antigenmaskierung mit TE- Puffer pH 9,0 empfohlen. (*) Wahlweise kann die Antigenmaskierung auch mit Citratpuffer pH 6,0 erfolgen.	IHC : humanes Hirngewebe, IF : HepG2-Zellen,

Hintergrundinformationen

IMPA1 is an enzyme that dephosphorylates myo-inositol monophosphate to generate free myo-inositol, a precursor of phosphatidylinositol, and is therefore an important modulator of intracellular signal transduction via the production of the second messengers myoinositol 1,4,5-trisphosphate and diacylglycerol.

Lagerung

Lagerungsbedingungen:
Bei -20°C lagern. Nach dem Versand ein Jahr lang stabil

Lagerungspuffer:
PBS mit 0.02% Natriumazid und 50% Glycerin pH 7.3.

Aliquotieren ist nicht notwendig bei -20°C Lagerung

*** 20ul-Größen enthalten 0.1% BSA

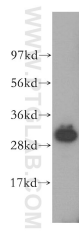
For technical support and original validation data for this product please contact:

T: 1 (888) 4PTGLAB (1-888-478-4522) (toll free
in USA), or 1(312) 455-8498 (outside USA)

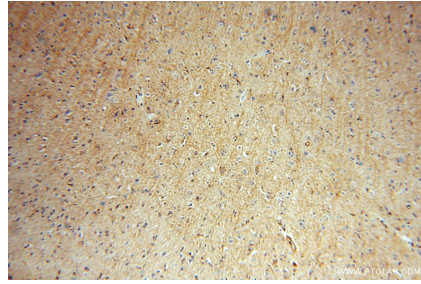
E: proteintech@ptglab.com
W: ptglab.com

This product is exclusively available under Proteintech Group brand and is not available to purchase from any other manufacturer.

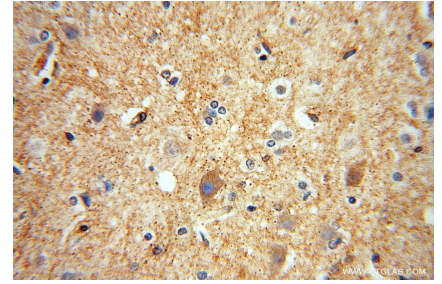
Ausgewählte Validierungsdaten



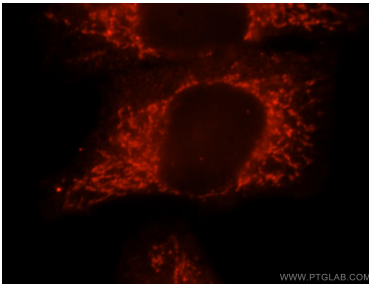
human kidney tissue were subjected to SDS PAGE followed by western blot with 16593-1-AP (IMPA1 antibody) at dilution of 1:300 incubated at room temperature for 1.5 hours.



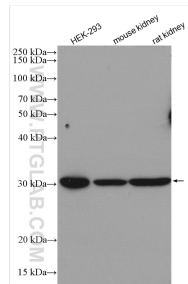
Immunohistochemical analysis of paraffin-embedded human brain using 16593-1-AP (IMPA1 antibody) at dilution of 1:50 (under 10x lens).



Immunohistochemical analysis of paraffin-embedded human brain using 16593-1-AP (IMPA1 antibody) at dilution of 1:50 (under 40x lens).



Immunofluorescent analysis of HepG2 cells, using IMPA1 antibody 16593-1-AP at 1:25 dilution and Rhodamine-labeled goat anti-rabbit IgG (red).



Various lysates were subjected to SDS PAGE followed by western blot with 16593-1-AP (IMPA1 antibody) at dilution of 1:2000 incubated at room temperature for 1.5 hours.