

Allgemeine Informationen

Katalog-Nr.:
16601-1-AP

Größe:
150ul , Konzentration: 350 µg/ml von
Nanodrop und 240 µg/ml durch die
Bradford-Methode mit BSA als
Standard;

Wirt:
Kaninchen

Isotyp:
IgG

Immunogen Katalognummer:
AG9770

GenBank-Zugangsnummer:
BC020689

GeneID (NCBI):
10404

Vollständiger Name:
plasma glutamate carboxypeptidase

Berechnete Masse:
472 aa, 52 kDa

Beobachtete Masse:
65-70 kDa

Reinigungsmethode:

Antigen-Affinitätsreinigung

Empfohlene Verdünnungen:

WB 1:500-1:1000
IP 0.5-4.0 ug für IP und 1:500-1:1000
für WB
IF 1:20-1:200

Anwendungen

Geprüfte Anwendungen:

IF, IP, WB,ELISA

Getestete Reaktivität:

Human, Maus

Positivkontrollen:

WB : L02-Zellen, humanes Plasmagewebe, humanes
Plazenta-Gewebe, Mausnierengewebe

IP : Mausnierengewebe,

IF : L02-Zellen,

Hintergrundinformationen

PGCP(plasma glutamate carboxypeptidase) is also named as LCH1,CPQ and belongs to the peptidase M28 family. It may play an important role in the hydrolysis of circulating peptides. It catalyzes more efficiently the hydrolysis of dipeptides with unsubstituted terminals into amino acids. It is a proteinase that acts on the unsubstituted N- and C-termini of dipeptides. It has been suggested that this PGCP is involved in the release of thyroxine(PMID:20951214). Human PGCP is a metallopeptidase with five potential glycosylation sites, whose activity depends on dimerization and it can be detected a band of 65-72kd in FRTL-5 cells which is pro-PGCP(PMID:22127294). It can be N-glycosylated(PMID:10206990). It has the pro-form of 60-65 kDa and mature form of 55 kDa(PMID:20951214).

Lagerung

Lagerungsbedingungen:

Bei -20°C lagern. Nach dem Versand ein Jahr lang stabil

Lagerungspuffer:

PBS mit 0.02% Natriumazid und 50% Glycerin pH 7.3.

Aliquotieren ist nicht notwendig bei -20°C Lagerung

***** 20ul-Größen enthalten 0.1% BSA**

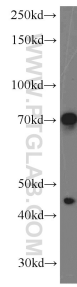
For technical support and original validation data for this product please contact:

T: 1 (888) 4PTGLAB (1-888-478-4522) (toll free
in USA), or 1(312) 455-8498 (outside USA)

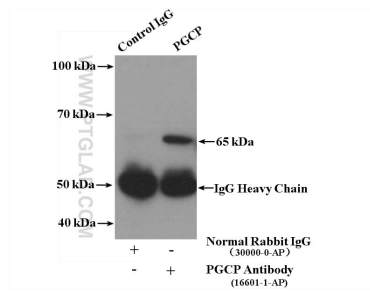
E: proteintech@ptglab.com
W: ptglab.com

This product is exclusively available under Proteintech Group brand and is not available to purchase from any other manufacturer.

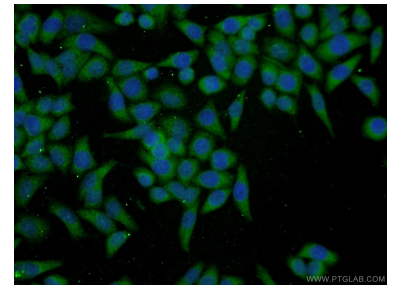
Ausgewählte Validierungsdaten



L02 cells were subjected to SDS PAGE followed by western blot with 16601-1-AP (PGCP antibody) at dilution of 1:600 incubated at room temperature for 1.5 hours.



IP Result of anti-PGCP (IP:16601-1-AP, 4ug; Detection:16601-1-AP 1:500) with mouse kidney tissue lysate 4000ug.



Immunofluorescent analysis of L02 cells using 16601-1-AP (PGCP antibody) at dilution of 1:50 and Alexa Fluor 488-conjugated AffiniPure Goat Anti-Rabbit IgG(H+L).