

Nur für Forschungszwecke

# ME1 Polyklonaler Antikörper

Katalog-Nr.:16619-1-AP

Vorgestelltes Produkt

17 Publikationen



## Allgemeine Informationen

Katalog-Nr.:

16619-1-AP

Größe:

150ul, Konzentration: 550 µg/ml von Nanodrop;

Wirt:

Kaninchen

Isotyp:

IgG

Immunogen Katalognummer:

AG9916

GenBank-Zugangsnummer:

BC025246

GeneID (NCBI):

4199

Vollständiger Name:

malic enzyme 1, NADP(+)-dependent, cytosolic

Berechnete Masse:

572 aa, 64 kDa

Beobachtete Masse:

55-64 kDa

Reinigungsmethode:

Antigen-Affinitätsreinigung

Empfohlene Verdünnungen:

WB 1:500-1:2000

IP 0.5-4.0 µg für IP und 1:500-1:1000

für WB

IHC 1:20-1:200

## Anwendungen

Geprüfte Anwendungen:

IHC, IP, WB, ELISA

In Publikationen genannte Anwendungen:

IF, IHC, WB

Getestete Reaktivität:

Human, Maus, Ratte

Zitierte Arten:

Human, Maus

**Hinweis-IHC: Antigendemaskierung mit TE-Puffer pH 9,0 empfohlen. (\*) Wahlweise kann die Antigendemaskierung auch mit Citratpuffer pH 6,0 erfolgen.**

Positivkontrollen:

WB: Mauslebergewebe, HeLa-Zellen, Maus-Plazenta-Gewebe, MCF-7-Zellen, Rattenlebergewebe

IP: Mauslebergewebe,

IHC: humanes Lebergewebe, humanes Plazenta-Gewebe

## Hintergrundinformationen

ME1(NADP-dependent malic enzyme) belongs to the malic enzymes family. This malic enzyme catalyzes the reversible oxidative decarboxylation of malate and is a link between the glycolytic pathway and the citric acid cycle. The reaction is L-malate plus NADP(+) to form pyruvate, CO(2), and NADPH. The predicted protein contains 572 amino acids and has a calculated molecular mass of 64.1 kDa.

## Bemerkenswerte Veröffentlichungen

Verfasser	Pubmed ID	Journal	Anwendung
Lorenzo M Fernandes	30250042	Sci Rep	IHC,WB
Lei Ye	33491741	Int J Oncol	WB
Al-Dwairi Ahmed A	23056418	PLoS One	IHC

## Lagerung

Lagerungsbedingungen:

Bei -20°C lagern. Nach dem Versand ein Jahr lang stabil

Lagerungspuffer:

PBS mit 0.02% Natriumazid und 50% Glycerin pH 7.3.

Aliquotieren ist nicht notwendig bei -20°C Lagerung

\*\*\* 20ul-Größen enthalten 0.1% BSA

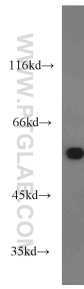
For technical support and original validation data for this product please contact:

T: 1 (888) 4PTGLAB (1-888-478-4522) (toll free in USA), or 1(312) 455-8498 (outside USA)

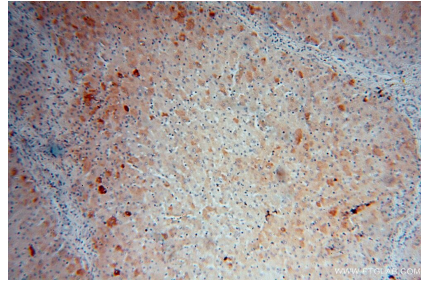
E: proteintech@ptglab.com  
W: ptglab.com

This product is exclusively available under Proteintech Group brand and is not available to purchase from any other manufacturer.

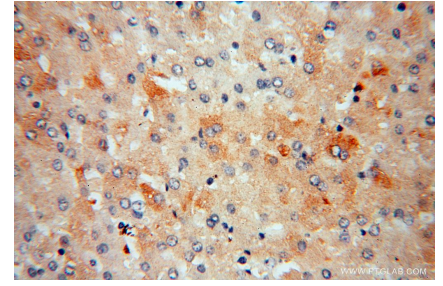
## Ausgewählte Validierungsdaten



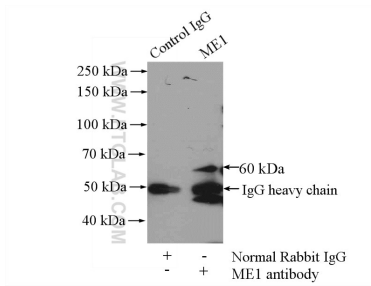
mouse liver tissue were subjected to SDS PAGE followed by western blot with 16619-1-AP (ME1 antibody) at dilution of 1:2000 incubated at room temperature for 1.5 hours.



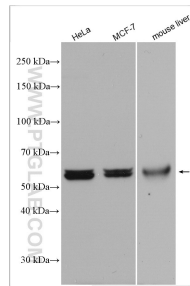
Immunohistochemical analysis of paraffin-embedded human liver using 16619-1-AP (ME1 antibody) at dilution of 1:100 (under 10x lens).



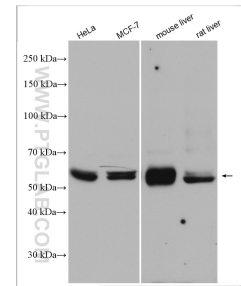
Immunohistochemical analysis of paraffin-embedded human liver using 16619-1-AP (ME1 antibody) at dilution of 1:100 (under 40x lens).



IP Result of anti-ME1 (IP:16619-1-AP, 4ug; Detection:16619-1-AP 1:500) with mouse liver tissue lysate 4000ug.



Various lysates were subjected to SDS PAGE followed by western blot with 16619-1-AP (ME1 antibody) at dilution of 1:4000 incubated at room temperature for 1.5 hours.



Various lysates were subjected to SDS PAGE followed by western blot with 16619-1-AP (ME1 antibody) at dilution of 1:4000 incubated at room temperature for 1.5 hours.