

Nur für Forschungszwecke

GRB10 Polyklonaler Antikörper

Katalog-Nr.:16622-1-AP



Allgemeine Informationen

Katalog-Nr.: 16622-1-AP	GenBank-Zugangsnummer: BC024285	Reinigungsmethode: Antigen-Affinitätsreinigung
Größe: 150ul , Konzentration: 140 µg/ml durch die Bradford-Methode mit BSA als Standard;	GeneID (NCBI): 2887	Empfohlene Verdünnungen: WB 1:200-1:1000 IF 1:20-1:200
Wirt: Kaninchen	Vollständiger Name: growth factor receptor-bound protein 10	
Isotyp: IgG	Berechnete Masse: 536aa,61 kDa; 594aa,67 kDa	
Immunogen Katalognummer: AG9921	Beobachtete Masse: 65 kDa	

Anwendungen

Geprüfte Anwendungen: IF, WB,ELISA	Positivkontrollen: WB : HepG2-Zellen, IF : HepG2-Zellen,
Getestete Reaktivität: Human, Maus, Ratte	

Hintergrundinformationen

Growth factor receptor-bound protein 10 (GRB10) is an adapter protein which modulates coupling of a number of cell surface receptor kinases with specific signaling pathways. GRB10 has three consensus domains including pleckstrin homology (PH) domain, SH2/SH3 domain and Ras-associating domain. By binding to kinases, GRB10 suppresses signals from activated receptors tyrosine kinases, including the ins (INSR) and ins-like growth factor (IGF1R) receptors. It may play a role in mediating ins-stimulated ubiquitination of INSR, leading to proteasomal degradation.

Lagerung

Lagerungsbedingungen:
Bei -20°C lagern. Nach dem Versand ein Jahr lang stabil

Lagerungspuffer:
PBS mit 0.02% Natriumazid und 50% Glycerin pH 7.3.

Aliquotieren ist nicht notwendig bei -20°C Lagerung

*** 20ul-Größen enthalten 0.1% BSA

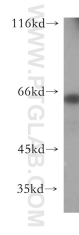
For technical support and original validation data for this product please contact:

T: 1 (888) 4PTGLAB (1-888-478-4522) (toll free
in USA), or 1(312) 455-8498 (outside USA)

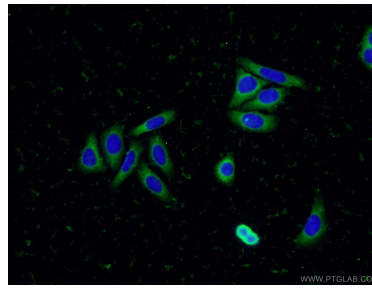
E: proteintech@ptglab.com
W: ptglab.com

This product is exclusively available under Proteintech Group brand and is not available to purchase from any other manufacturer.

Ausgewählte Validierungsdaten



HepG2 cells were subjected to SDS PAGE followed by western blot with 16622-1-AP (GRB10 antibody) at dilution of 1:500 incubated at room temperature for 1.5 hours.



Immunofluorescent analysis of (-20°C Ethanol) fixed HepG2 cells using 16622-1-AP (GRB10 antibody) at dilution of 1:50 and Alexa Fluor 488-conjugated AffiniPure Goat Anti-Rabbit IgG(H+L).