

Nur für Forschungszwecke

# TIMP1 Polyklonaler Antikörper

Katalog-Nr.:16644-1-AP

61 Publikationen



## Allgemeine Informationen

|   |  |  |
|---|--|--|
| <b>Katalog-Nr.:</b><br>16644-1-AP                               | <b>GenBank-Zugangsnummer:</b><br>BC000866                        | <b>Reinigungsmethode:</b><br>Antigen-Affinitätsreinigung |
| <b>Größe:</b><br>150ul , Konzentration: 500 µg/ml von Nanodrop; | <b>GeneID (NCBI):</b><br>7076                                    | <b>Empfohlene Verdünnungen:</b><br>IF 1:200-1:800        |
| <b>Wirt:</b><br>Kaninchen                                       | <b>Vollständiger Name:</b><br>TIMP metalloproteinase inhibitor 1 |  |
| <b>Isotyp:</b><br>IgG   | <b>Berechnete Masse:</b><br>23 kDa                               |  |
| <b>Immunogen Katalognummer:</b><br>AG10006                      | <b>Beobachtete Masse:</b><br>23 kDa                              |  |

## Anwendungen

|  |   |
|--|---|
| <b>Geprüfte Anwendungen:</b><br>IF, WB,ELISA             | <b>Positivkontrollen:</b><br>IF : HT-29-Zellen, |
| <b>In Publikationen genannte Anwendungen:</b><br>IF, IHC |   |
| <b>Getestete Reaktivität:</b><br>Human                   |   |
| <b>Zitierte Arten:</b><br>Human, Kaninchen, Rind         |   |

## Hintergrundinformationen

TIMP1 is a member of the family of matrix metalloproteinase inhibitors, which contains four members (TIMP1, TIMP2, TIMP3, and TIMP4). Tissue inhibitors of metalloproteinases (TIMPs) are multifaceted molecules that exhibit properties beyond their classical proteinase inhibitory function. TIMP1 has several MMP-independent functions such as modulation of angiogenesis, promotion of cell proliferation, and inhibition of apoptosis. TIMP1 plays important role in cell cycle regulation and cancer progression. Recently, clinical studies have shown that the aberrant expression of TIMP1 is associated with an unfavorable prognosis in a series of tumors, such as gastric cancer, papillary thyroid carcinoma, cutaneous melanoma and breast cancer. In pregnancy, TIMP1 plays a regulatory role in the process of implantation, particularly the cytotrophoblast invasion of the uterine endometrium. In pregnancy, TIMP1 plays a regulatory role in the process of implantation, particularly the cytotrophoblast invasion of the uterine endometrium.

## Bemerkenswerte Veröffentlichungen

| Verfasser              | Pubmed ID | Journal                    | Anwendung |
|------------------------|-----------|----------------------------|-----------|
| Cheng-Chieh Fang       | 30217986  | Sci Rep                    | IHC       |
| Xiao-Xiao He           | 30219235  | Biochem Biophys Res Commun | WB        |
| Henrique Bregolin Dias | 31509566  | PLoS One                   | WB        |

## Lagerung

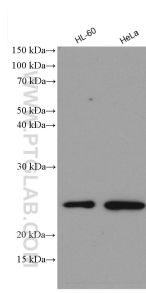
**Lagerungsbedingungen:**  
Bei -20°C lagern. Nach dem Versand ein Jahr lang stabil  
**Lagerungspuffer:**  
PBS mit 0.02% Natriumazid und 50% Glycerin pH 7.3.  
Aliquotieren ist nicht notwendig bei -20°C Lagerung

\*\*\* 20ul-Größen enthalten 0.1% BSA

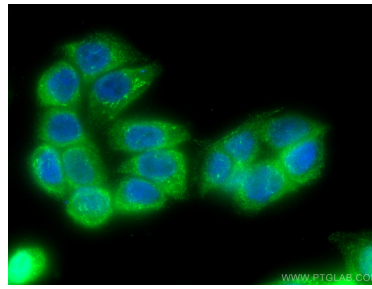
For technical support and original validation data for this product please contact:  
T: 1 (888) 4PTGLAB (1-888-478-4522) (toll free in USA), or 1(312) 455-8498 (outside USA)  
E: proteintech@ptglab.com  
W: ptglab.com

This product is exclusively available under Proteintech Group brand and is not available to purchase from any other manufacturer.

## Ausgewählte Validierungsdaten



Various lysates were subjected to SDS PAGE followed by western blot with 16644-1-AP (TIMP1 antibody) at dilution of 1:3000 incubated at room temperature for 1.5 hours.



Immunofluorescent analysis of (4% PFA) fixed HT-29 cells using TIMP1 antibody (16644-1-AP) at dilution of 1:400 and CoraLite®488-Conjugated AffiniPure Goat Anti-Rabbit IgG(H+L).