

Nur für Forschungszwecke

ASL Polyklonaler Antikörper

Katalog-Nr.:16645-1-AP

2 Publikationen



Allgemeine Informationen

Katalog-Nr.: 16645-1-AP	GenBank-Zugangsnummer: BC008195	Reinigungsmethode: Antigen-Affinitätsreinigung
Größe: 150ul , Konzentration: 600 µg/ml von Nanodrop;	GeneID (NCBI): 435	Empfohlene Verdünnungen: WB 1:1000-1:6000 IHC 1:100-1:400
Wirt: Kaninchen	Vollständiger Name: argininosuccinate Lyase	
Isotyp: IgG	Berechnete Masse: 55 kDa	
Immunogen Katalognummer: AG10007	Beobachtete Masse: 49 kDa	

Anwendungen

Geprüfte Anwendungen:

IHC, WB,ELISA

In Publikationen genannte Anwendungen:

IHC, WB

Getestete Reaktivität:

Human, Maus, Ratte

Zitierte Arten:

Human, Maus

Hinweis-IHC: Antigenmaskierung mit TE-Puffer pH 9,0 empfohlen. (*) Wahlweise kann die Antigenmaskierung auch mit Citratpuffer pH 6,0 erfolgen.

Positivkontrollen:

WB : Mausnierengewebe, Mauslebergewebe, Rattenlebergewebe, Rattennierengewebe

IHC : humanes Leberkarzinomgewebe,

Hintergrundinformationen

Argininosuccinate lyase (ASL), one of the significant UC enzymes, catalyzes argininosuccinate cleavage to generate arginine and fumarate. Arginine is then catalyzed by arginase to ornithine and polyamines, which are found to promote cancer cell proliferation and growth. Importantly, ASL ectopic expression is closely associated with poor prognosis of colorectal cancer, hepatocellular. ASL is a member of the aspartase/fumarase superfamily. Enzymes of this superfamily share similar tetrameric structure and active site, though the sequence identities between different members are quite low (less than 20%). Members of this superfamily have been recognised as drug targets for microbial infections. ASL is a 464-amino-acid enzyme with a molecular mass of 49.7 kDa. (PMID: 22386318 PMID: 31018905)

Bemerkenswerte Veröffentlichungen

Verfasser	Pubmed ID	Journal	Anwendung
Yin Cao	30901224	J Proteome Res	WB,IHC
Wenxiang Zhang	32029232	Mol Metab	WB

Lagerung

Lagerungsbedingungen:

Bei -20°C lagern. Nach dem Versand ein Jahr lang stabil

Lagerungspuffer:

PBS mit 0.02% Natriumazid und 50% Glycerin pH 7.3.

Aliquotieren ist nicht notwendig bei -20°C Lagerung

*** 20ul-Größen enthalten 0.1% BSA

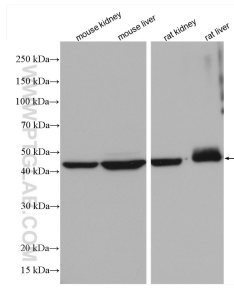
For technical support and original validation data for this product please contact:

T: 1 (888) 4PTGLAB (1-888-478-4522) (toll free in USA), or 1(312) 455-8498 (outside USA)

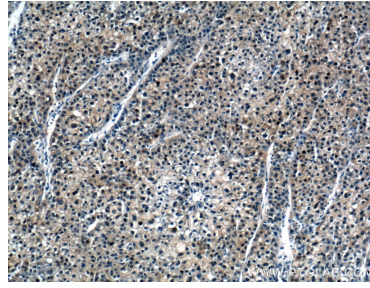
E: proteintech@ptglab.com
W: ptglab.com

This product is exclusively available under Proteintech Group brand and is not available to purchase from any other manufacturer.

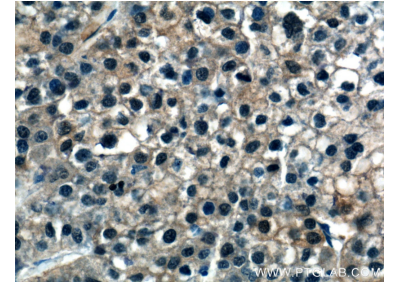
Ausgewählte Validierungsdaten



Various lysates were subjected to SDS PAGE followed by western blot with 16645-1-AP (ASL antibody) at dilution of 1:3000 incubated at room temperature for 1.5 hours.



Immunohistochemical analysis of paraffin-embedded human liver cancer tissue slide using 16645-1-AP (ASL Antibody) at dilution of 1:200 (under 10x lens).



Immunohistochemical analysis of paraffin-embedded human liver cancer tissue slide using 16645-1-AP (ASL Antibody) at dilution of 1:200 (under 40x lens).