

Nur für Forschungszwecke

LDB1 Polyklonaler Antikörper

Katalog-Nr.:16650-1-AP



Allgemeine Informationen

Katalog-Nr.: 16650-1-AP	GenBank-Zugangsnummer: BC000482	Reinigungsmethode: Antigen-Affinitätsreinigung
Größe: 150ul, Konzentration: 500 µg/ml von Nanodrop;	GeneID (NCBI): 8861	Empfohlene Verdünnungen: WB 1:1000-1:4000
Wirt: Kaninchen	Vollständiger Name: LIM domain binding 1	
Isotyp: IgG	Berechnete Masse: 46 kDa	
Immunogen Katalognummer: AG10082	Beobachtete Masse: 46 kDa	

Anwendungen

Geprüfte Anwendungen: WB, ELISA	Positivkontrollen: WB : HEK-293-Zellen, HeLa-Zellen, K-562-Zellen, Mausnierenewebe
Getestete Reaktivität: Human	

Hintergrundinformationen

LIM domain-binding protein 1 (LDB1), also known as Carboxyl-terminal LIM domain-binding protein 2 (CLIM2), binds to the LIM domain of a wide variety of LIM domain-containing transcription factors. LDB1 may regulate the transcriptional activity of LIM-containing proteins by determining specific partner interactions. It plays a role in the development of interneurons and motor neurons in cooperation with LHX3 and ISL1. LDB1 acts synergistically with LHX1/LIM1 in axis formation and activation of gene expression. It also acts with LMO2 in the regulation of red blood cell development, maintaining erythroid precursors in an immature state. LDB1 strongly interacts with the LIM2 domain of LMX1A to form homodimer. LDB1 protein is expressed in a wide range of adult tissues including brain, heart, skeletal muscle, colon, thymus, spleen, kidney, liver, small intestine, lung and peripheral blood leukocytes. Due to alternative splicing events, three isoforms exist for LDB1. This antibody reacts with isoform 1.

Lagerung

Lagerungsbedingungen:
Bei -20°C lagern. Nach dem Versand ein Jahr lang stabil
Lagerungspuffer:
PBS mit 0.02% Natriumazid und 50% Glycerin pH 7.3.
Aliquotieren ist nicht notwendig bei -20°C Lagerung

*** 20ul-Größen enthalten 0.1% BSA

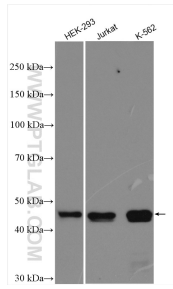
For technical support and original validation data for this product please contact:

T: 1 (888) 4PTGLAB (1-888-478-4522) (toll free
in USA), or 1(312) 455-8498 (outside USA)

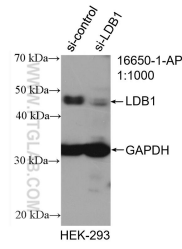
E: proteintech@ptglab.com
W: ptglab.com

This product is exclusively available under Proteintech Group brand and is not available to purchase from any other manufacturer.

Ausgewählte Validierungsdaten



Various lysates were subjected to SDS PAGE followed by western blot with 16650-1-AP (LDB1 antibody) at dilution of 1:2000 incubated at room temperature for 1.5 hours.



WB result of LDB1 antibody (16650-1-AP; 1:1000; incubated at room temperature for 1.5 hours) with sh-Control and sh-LDB1 transfected HEK-2993 cells.