

Nur für Forschungszwecke

# Haptoglobin Polyklonaler Antikörper



Katalog-Nr.:16665-1-AP

6 Publikationen

## Allgemeine Informationen

Katalog-Nr.:  
16665-1-AP

Größe:  
150ul, Konzentration: 150 µg/ml von  
Nanodrop und 147 µg/ml durch die  
Bradford-Methode mit BSA als  
Standard;

Wirt:  
Kaninchen

Isotyp:  
IgG

Immunogen Katalognummer:  
AG10143

GenBank-Zugangsnummer:  
BC058031

GeneID (NCBI):  
3240

Vollständiger Name:  
haptoglobin

Berechnete Masse:  
281aa,31 kDa; 228aa,25 kDa

Beobachtete Masse:  
42 kDa

Reinigungsmethode:

Antigen-Affinitätsreinigung

Empfohlene Verdünnungen:

WB 1:500-1:2000  
IP 0.5-4.0 ug für IP und 1:500-1:1000  
für WB  
IHC 1:50-1:500

## Anwendungen

Geprüfte Anwendungen:

IHC, IP, WB, ELISA

In Publikationen genannte Anwendungen:

IHC, WB

Getestete Reaktivität:

Human, Maus, Ratte

Zitierte Arten:

Human

**Hinweis-IHC: Antigenmaskierung mit TE-  
Puffer pH 9,0 empfohlen. (\*) Wahlweise  
kann die Antigenmaskierung auch mit  
Citratpuffer pH 6,0 erfolgen.**

Positivkontrollen:

WB : HEK-293-Zellen, humanes Lebergewebe

IP : HepG2-Zellen,

IHC : humanes Leberkarzinomgewebe, humanes  
Lungenkarzinomgewebe

## Hintergrundinformationen

HP(Haptoglobin) is also named as zonulin and belongs to the peptidase S1 family. HP, a plasma glycoprotein that binds free hemoglobin, has a tetrameric structure of 2 alpha(16 kDa and 9 kDa) and 2 beta(40 kDa) polypeptides that are covalently associated by disulfide bonds. In most species, apart from ruminants, Hp has a molecular mass of 100 kDa, consisting of two subunits of 40 kDa and two subunits of 9 kDa, although in a few species, such as man, genetic variant of Hp forms polymers of higher mass(PMID:2361363). Recent studies of haptoglobin show that certain oligosaccharide structures predominate in different diseases. For example, a highly-fucosylated structure is found in breast cancer and ovarian cancer, highly-sialylated structures in Crohn's disease and highly branched structures in alcoholic liver disease and fucosylated haptoglobin is a good serum marker for pancreatic cancer.(PMID:16385567).

## Bemerkenswerte Veröffentlichungen

Verfasser	Pubmed ID	Journal	Anwendung
Hua Shen	25801896	Circ Res	WB
John D Belcher	26914345	Antioxid Redox Signal	
Ting Xue	27162549	Theranostics	WB

## Lagerung

Lagerungsbedingungen:

Bei -20°C lagern. Nach dem Versand ein Jahr lang stabil

Lagerungspuffer:

PBS mit 0.02% Natriumazid und 50% Glycerin pH 7.3.

Aliquotieren ist nicht notwendig bei -20°C Lagerung

\*\*\* 20ul-Größen enthalten 0.1% BSA

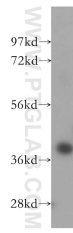
For technical support and original validation data for this product please contact:

T: 1 (888) 4PTGLAB (1-888-478-4522) (toll free  
in USA), or 1(312) 455-8498 (outside USA)

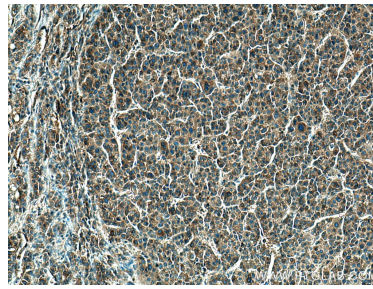
E: proteintech@ptglab.com  
W: ptglab.com

This product is exclusively available under Proteintech Group brand and is not available to purchase from any other manufacturer.

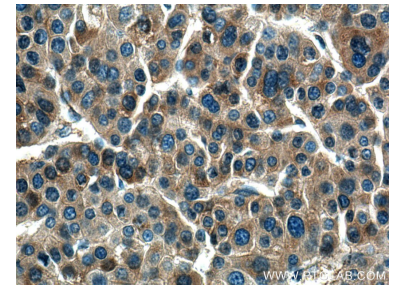
## Ausgewählte Validierungsdaten



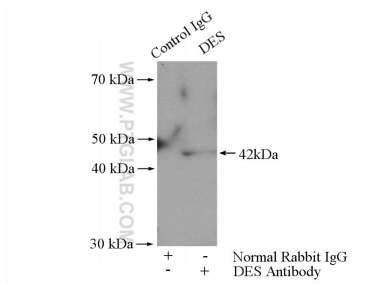
HEK-293 cells were subjected to SDS PAGE followed by western blot with 16665-1-AP (Haptoglobin antibody) at dilution of 1:500 incubated at room temperature for 1.5 hours.



Immunohistochemical analysis of paraffin-embedded human liver cancer tissue slide using 16665-1-AP (Haptoglobin antibody) at dilution of 1:200 (under 10x lens). Heat mediated antigen retrieval with Tris-EDTA buffer (pH 9.0).



Immunohistochemical analysis of paraffin-embedded human liver cancer tissue slide using 16665-1-AP (Haptoglobin antibody) at dilution of 1:200 (under 40x lens). Heat mediated antigen retrieval with Tris-EDTA buffer (pH 9.0).



IP Result of anti-Haptoglobin (IP:16665-1-AP, 4ug; Detection:16665-1-AP 1:500) with HepG2 cells lysate 2000ug.