

## Allgemeine Informationen

**Katalog-Nr.:**

16674-1-AP

**Größe:**

150ul, Konzentration: 500 µg/ml von Nanodrop;

**Wirt:**

Kaninchen

**Isotyp:**

IgG

**Immunogen Katalognummer:**

AG10168

**GenBank-Zugangsnummer:**

BC051284

**GeneID (NCBI):**

6773

**Vollständiger Name:**

signal transducer and activator of transcription 2, 113kDa

**Berechnete Masse:**

851 aa, 98 kDa

**Beobachtete Masse:**

113 kDa

**Reinigungsmethode:**

Antigen-Affinitätsreinigung

**Empfohlene Verdünnungen:**
WB 1:500-1:2000  
IP 0.5-4.0 µg für IP und 1:500-1:1000 für WB  
IHC 1:20-1:200

## Anwendungen

**Geprüfte Anwendungen:**

IHC, IP, WB, ELISA

**In Publikationen genannte Anwendungen:**

IF, IP, WB

**Getestete Reaktivität:**

Human

**Zitierte Arten:**

Hausschwein, Human

**Positivkontrollen:**

WB: A431-Zellen, HeLa-Zellen, HT-1080.Zellen, K-562-Zellen

IP: HeLa-Zellen,

IHC: humanes Mammakarzinomgewebe, humanes Lungenkarzinomgewebe

**Hinweis-IHC: Antigenmaskierung mit TE-Puffer pH 9,0 empfohlen. (\*) Wahlweise kann die Antigenmaskierung auch mit Citratpuffer pH 6,0 erfolgen.**

## Hintergrundinformationen

STAT2, also named as p113, belongs to the transcription factor STAT family. It is a signal transducer and activator of transcription that mediates signaling by type I IFNs (IFN-alpha and IFN-beta). Following type I IFN binding to cell surface receptors, Jak kinases (TYK2 and JAK1) are activated, leading to tyrosine phosphorylation of STAT1 and STAT2. The phosphorylated STATs dimerize and associate with ISGF3G/IRF-9 to form a complex termed ISGF3 transcription factor, that enters the nucleus. ISGF3 binds to the IFN stimulated response element (ISRE) to activate the transcription of IFN stimulated genes, which drive the cell in an antiviral state. It also interacts with CRSP2, CRSP6, Simian virus 5 protein V, rabies virus phosphoprotein, IFNAR1 and IFNAR2. Its interaction with dengue virus NS5 inhibits the phosphorylation of STAT2, and, when all viral proteins are present (polyprotein), STAT2 is targeted for degradation. This antibody is a rabbit polyclonal antibody raised against residues near the C terminus of human STAT2. The calculated molecular weight of STAT2 is 98 kDa, but phosphorylated STAT2 is about 100-113 kDa.

## Bemerkenswerte Veröffentlichungen

Verfasser	Pubmed ID	Journal	Anwendung
Orawan Wonganan	29031523	Toxicol Appl Pharmacol	WB
Xin Zong	33248053	Int J Biol Macromol	WB
Ighodaro Igbe	29371942	Oncotarget	WB

## Lagerung

**Lagerungsbedingungen:**

Bei -20°C lagern. Nach dem Versand ein Jahr lang stabil

**Lagerungspuffer:**

PBS mit 0.02% Natriumazid und 50% Glycerin pH 7.3.

Aliquotieren ist nicht notwendig bei -20°C Lagerung

**\*\*\* 20ul-Größen enthalten 0.1% BSA**

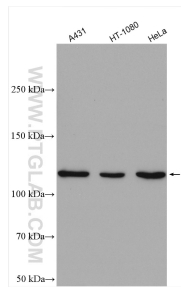
For technical support and original validation data for this product please contact:

T: 1 (888) 4PTGLAB (1-888-478-4522) (toll free in USA), or 1(312) 455-8498 (outside USA)

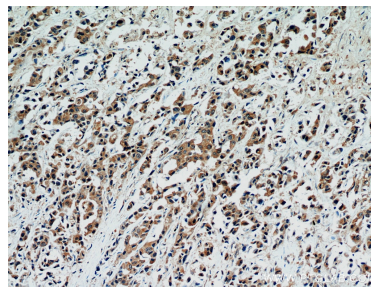
E: [proteintech@ptglab.com](mailto:proteintech@ptglab.com)  
 W: [ptglab.com](http://ptglab.com)

**This product is exclusively available under Proteintech Group brand and is not available to purchase from any other manufacturer.**

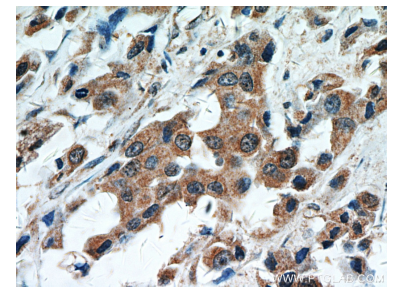
## Ausgewählte Validierungsdaten



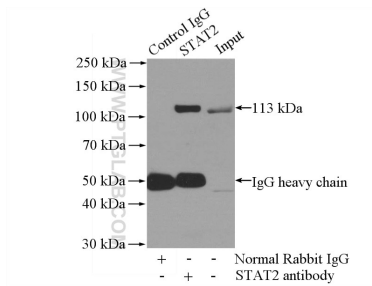
Various lysates were subjected to SDS PAGE followed by western blot with 16674-1-AP (STAT2 antibody) at dilution of 1:1000 incubated at room temperature for 1.5 hours.



Immunohistochemical analysis of paraffin-embedded human breast cancer using 16674-1-AP (STAT2 antibody) at dilution of 1:50 (under 10x lens).



Immunohistochemical analysis of paraffin-embedded human breast cancer using 16674-1-AP (STAT2 antibody) at dilution of 1:50 (under 40x lens).



IP Result of anti-STAT2 (IP:16674-1-AP, 4ug; Detection:16674-1-AP 1:500) with HeLa cells lysate 2800ug.