

Allgemeine Informationen

Katalog-Nr.: 16696-1-AP	GenBank-Zugangsnummer: BC052602	Reinigungsmethode: Antigen-Affinitätsreinigung
Größe: 150ul , Konzentration: 240 µg/ml von Nanodrop und 173 µg/ml durch die Bradford-Methode mit BSA als Standard;	GeneID (NCBI): 377677	Empfohlene Verdünnungen: WB 1:500-1:3000 IHC 1:20-1:200 IF 1:50-1:500
Wirt: Kaninchen	Vollständiger Name: carbonic anhydrase XIII	
Isotyp: IgG	Berechnete Masse: 262 aa, 29 kDa	
Immunogen Katalognummer: AG10086	Beobachtete Masse: 30 kDa	

Anwendungen

Geprüfte Anwendungen: IF, IHC, WB,ELISA	Positivkontrollen: WB : NIH/3T3-Zellen, Maus-Skelettmuskelgewebe
Getestete Reaktivität: Human, Maus, Ratte	IHC : humanes Plazenta-Gewebe, humanes Herzgewebe, humanes Hodengewebe, humanes Milzgewebe, humanes Nierengewebe
Hinweis-IHC: Antigenmaskierung mit TE-Puffer pH 9,0 empfohlen. (*) Wahlweise kann die Antigenmaskierung auch mit Citratpuffer pH 6,0 erfolgen.	IF : NIH/3T3-Zellen,

Hintergrundinformationen

Carbonic anhydrases (CAs) are zinc-containing metalloenzymes that catalyze reversible hydration of carbon dioxide. The mammalian α -CA gene family has been reported to include at least eleven enzymatically active isoforms with different structural and catalytic properties. Four of the active CA isozymes are cytosolic (CA I, II, III, and VII), four are membrane-associated (CA IV, IX, XII, and XIV), two are mitochondrial (CA VA and VB), and one is a secretory form (CA VI). CA13 is a cytosolic protein that may play a role in embryogenesis and perturbation of its function by genetic modification could potentially lead to developmental abnormalities (PMID:14600151).

Lagerung

Lagerungsbedingungen:
Bei -20°C lagern. Nach dem Versand ein Jahr lang stabil
Lagerungspuffer:
PBS mit 0.02% Natriumazid und 50% Glycerin pH 7.3.
Aliquotieren ist nicht notwendig bei -20°C Lagerung

***** 20ul-Größen enthalten 0.1% BSA**

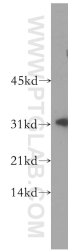
For technical support and original validation data for this product please contact:

T: 1 (888) 4PTGLAB (1-888-478-4522) (toll free in USA), or 1(312) 455-8498 (outside USA)

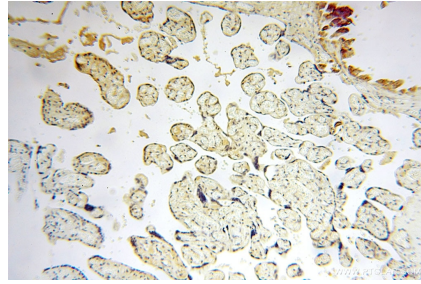
E: proteintech@ptglab.com
W: ptglab.com

This product is exclusively available under Proteintech Group brand and is not available to purchase from any other manufacturer.

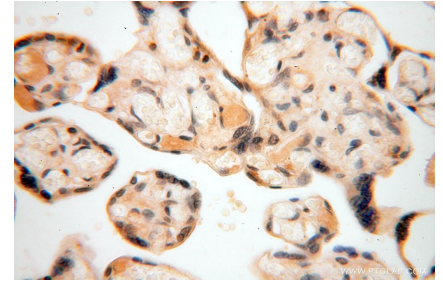
Ausgewählte Validierungsdaten



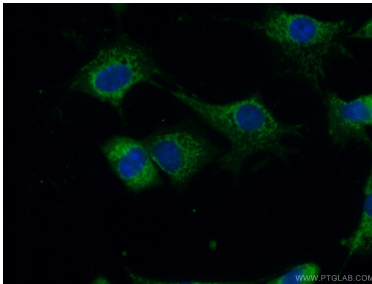
NIH/3T3 cells were subjected to SDS PAGE followed by western blot with 16696-1-AP (CA13 antibody) at dilution of 1:500 incubated at room temperature for 1.5 hours.



Immunohistochemical analysis of paraffin-embedded human placenta using 16696-1-AP (CA13 antibody) at dilution of 1:100 (under 10x lens).



Immunohistochemical analysis of paraffin-embedded human placenta using 16696-1-AP (CA13 antibody) at dilution of 1:100 (under 40x lens).



Immunofluorescent analysis of (10% Formaldehyde) fixed NIH/3T3 cells using 16696-1-AP (CA13 antibody) at dilution of 1:50 and Alexa Fluor 488-conjugated AffiniPure Goat Anti-Rabbit IgG(H+L).