

Nur für Forschungszwecke

# Glypican 1 Polyklonaler Antikörper

Katalog-Nr.:16700-1-AP

Vorgestelltes Produkt

17 Publikationen



## Allgemeine Informationen

Katalog-Nr.:  
16700-1-AP

Größe:  
150ul, Konzentration: 350 µg/ml von  
Nanodrop und 333 µg/ml durch die  
Bradford-Methode mit BSA als  
Standard;

Wirt:  
Kaninchen

Isotyp:  
IgG

Immunogen Katalognummer:  
AG10095

GenBank-Zugangsnummer:  
BC051279

GeneID (NCBI):  
2817

Vollständiger Name:  
glypican 1

Berechnete Masse:  
558 aa, 62 kDa

Beobachtete Masse:  
65 kDa

Reinigungsmethode:

Antigen-Affinitätsreinigung

Empfohlene Verdünnungen:

WB 1:500-1:1000  
IP 0.5-4.0 µg für IP und 1:500-1:1000  
für WB  
IHC 1:50-1:500

## Anwendungen

Geprüfte Anwendungen:

IHC, IP, WB, ELISA

In Publikationen genannte Anwendungen:

CoIP, IF, IHC, WB

Getestete Reaktivität:

Human, Maus, Ratte

Zitierte Arten:

Human, Maus

**Hinweis-IHC: Antigendemaskierung mit TE-  
Puffer pH 9,0 empfohlen. (\*) Wahlweise  
kann die Antigendemaskierung auch mit  
Citratpuffer pH 6,0 erfolgen.**

Positivkontrollen:

WB: HepG2-Zellen,

IP: BxPC-3-Zellen,

IHC: humanes Pankreaskarzinomgewebe,

## Hintergrundinformationen

Glypicans are a family of HSPGs that are attached to the cell membrane by a glycosyl-phosphatidylinositol anchor. Glypicans are considered to have the ability to modulate the activities of HBGFs. The expression of glypicans is regulated temporally and spatially during development, suggesting they are involved in development and morphogenesis. To date, six glypicans (GPC1 to GPC6) have been identified in mammals. GPC1 is most ubiquitously expressed in adult tissues. GPC1 promotes efficient signaling by HBGFs and plays a critical role in cell growth and differentiation. GPC1 is involved in tumorigenesis and angiogenesis, and is frequently overexpressed in several types of tumors including pancreatic carcinoma, breast cancer and glioma.

## Bemerkenswerte Veröffentlichungen

Verfasser	Pubmed ID	Journal	Anwendung
Ying Liu	36158119	Comput Math Methods Med	IHC
Steven Woods	30193893	Matrix Biol	WB
Anne Marie W Bartosch	34059731	Sci Rep	WB

## Lagerung

Lagerungsbedingungen:

Bei -20°C lagern. Nach dem Versand ein Jahr lang stabil

Lagerungspuffer:

PBS mit 0.02% Natriumazid und 50% Glycerin pH 7.3.

Aliquotieren ist nicht notwendig bei -20°C Lagerung

\*\*\* 20ul-Größen enthalten 0.1% BSA

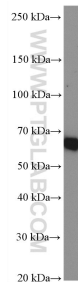
For technical support and original validation data for this product please contact:

T: 1 (888) 4PTGLAB (1-888-478-4522) (toll free  
in USA), or 1(312) 455-8498 (outside USA)

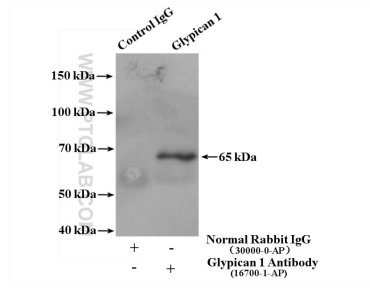
E: proteintech@ptglab.com  
W: ptglab.com

This product is exclusively available under Proteintech  
Group brand and is not available to purchase from any  
other manufacturer.

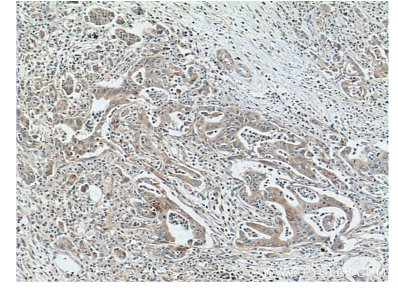
## Ausgewählte Validierungsdaten



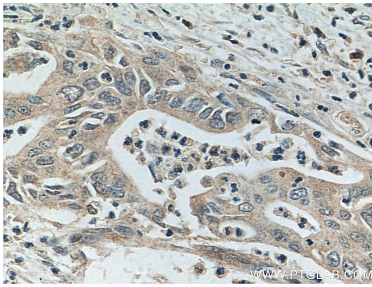
HepG2 cells were subjected to SDS PAGE followed by western blot with 16700-1-AP (Glypican 1 antibody) at dilution of 1:600 incubated at room temperature for 1.5 hours.



IP result of anti-Glypican 1 (IP:16700-1-AP, 4ug; Detection:16700-1-AP 1:600) with BxPC-3 cells lysate 3100 ug.



Immunohistochemical analysis of paraffin-embedded human pancreas cancer tissue slide using 16700-1-AP (Glypican 1 antibody) at dilution of 1:100 (under 10x lens. Heat mediated antigen retrieval with Tris-EDTA buffer (pH 9.0).



Immunohistochemical analysis of paraffin-embedded human pancreas cancer tissue slide using 16700-1-AP (Glypican 1 antibody) at dilution of 1:100 (under 40x lens. Heat mediated antigen retrieval with Tris-EDTA buffer (pH 9.0).