

Nur für Forschungszwecke

PSPC1 Polyklonaler Antikörper

Katalog-Nr.:16714-1-AP

3 Publikationen



Allgemeine Informationen

Katalog-Nr.:
16714-1-AP

Größe:
150ul, Konzentration: 793 µg/ml
durch die Bradford-Methode mit BSA
als Standard;

Wirt:
Kaninchen

Isotyp:
IgG

Immunogen Katalognummer:
AG10136

GenBank-Zugangsnummer:
BC014184

GeneID (NCBI):
55269

Vollständiger Name:
paraspeckle component 1

Berechnete Masse:
523 aa, 59 kDa

Beobachtete Masse:
66 kDa

Reinigungsmethode:

Antigen-Affinitätsreinigung

Empfohlene Verdünnungen:

WB 1:5000-1:50000

IP 0.5-4.0 µg für IP und 1:500-1:2000
für WB

IF 1:50-1:500

Anwendungen

Geprüfte Anwendungen:

IF, IP, WB, ELISA

In Publikationen genannte Anwendungen:

IF, WB

Getestete Reaktivität:

Human, Maus, Ratte

Zitierte Arten:

Human, Maus

Positivkontrollen:

WB : HEK-293-Zellen, HepG2-Zellen, PC-3-Zellen

IP : HEK-293-Zellen,

IF : PC-3-Zellen,

Hintergrundinformationen

PSPC1 (paraspeckle component 1), a known paraspeckle biomarker, is a putative transcription factor that belongs to the Drosophila behavior/human splicing (DBHS) family. PSPC1 was recently identified as a contextual determinant of tumor progression in multiple cancer types involving oncogenic reprogramming to switch proapoptotic TGF-β to prometastatic TGF-β via hijacking of Smad2/3 targeting. Upregulated PSPC1 is correlated with advanced tumor stages and poor survival of patients with breast, lung, and liver cancers. Upregulated PSPC1 potentiates expression of mesenchymal markers, EMT transcription factors (EMT-TF), cancer stem-like cell transcription factors (CSC-TF), and c-Myc-related proliferation genes, thus promoting migration, invasion, spheroid formation, tumor formation, and metastasis.

Bemerkenswerte Veröffentlichungen

Verfasser	Pubmed ID	Journal	Anwendung
Jing Fan	30032211	Nucleic Acids Res	WB
Ralf Kleene	36674445	Int J Mol Sci	WB
Gabriele Loers	36768419	Int J Mol Sci	IF

Lagerung

Lagerungsbedingungen:

Bei -20°C lagern. Nach dem Versand ein Jahr lang stabil

Lagerungspuffer:

PBS mit 0.02% Natriumazid und 50% Glycerin pH 7.3.

Aliquotieren ist nicht notwendig bei -20°C Lagerung

*** 20ul-Größen enthalten 0.1% BSA

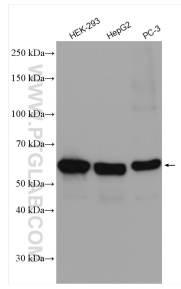
For technical support and original validation data for this product please contact:

T: 1 (888) 4PTGLAB (1-888-478-4522) (toll free
in USA), or 1(312) 455-8498 (outside USA)

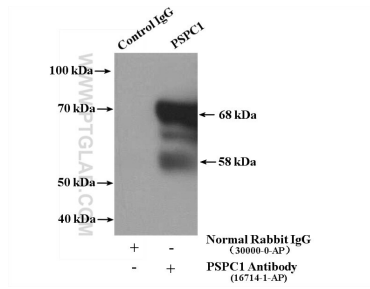
E: proteintech@ptglab.com
W: ptglab.com

This product is exclusively available under Proteintech Group brand and is not available to purchase from any other manufacturer.

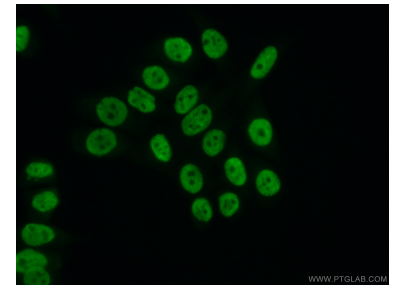
Ausgewählte Validierungsdaten



Various lysates were subjected to SDS PAGE followed by western blot with 16714-1-AP (PSPC1 antibody) at dilution of 1:12000 incubated at room temperature for 1.5 hours.



IP Result of anti-PSPC1 (IP:16714-1-AP, 4ug; Detection:16714-1-AP 1:1000) with HEK-293 cells lysate 2800ug.



Immunofluorescent analysis of (10% Formaldehyde) fixed PC-3 cells using 16714-1-AP (PSPC1 antibody) at dilution of 1:50 and Alexa Fluor 488-conjugated AffiniPure Goat Anti-Rabbit IgG(H+L).