

Nur für Forschungszwecke

NPL Polyklonaler Antikörper

Katalog-Nr.:16715-1-AP



Allgemeine Informationen

Katalog-Nr.:
16715-1-AP

Größe:
150ul , Konzentration: 400 µg/ml von
Nanodrop und 267 µg/ml durch die
Bradford-Methode mit BSA als
Standard;

Wirt:
Kaninchen

Isotyp:
IgG

Immunogen Katalognummer:
AG10137

GenBank-Zugangsnummer:
BC058003

GeneID (NCBI):
80896

Vollständiger Name:
N-acetylneuraminat pyruvat Lyase
(dihydrodipicolinat synthase)

Berechnete Masse:
27 kDa, 35 kDa

Beobachtete Masse:
35 kDa

Reinigungsmethode:

Antigen-Affinitätsreinigung

Empfohlene Verdünnungen:

WB 1:500-1:2000

IF 1:10-1:100

Anwendungen

Geprüfte Anwendungen:

IF, WB, ELISA

Getestete Reaktivität:

Human, Maus, Ratte

Positivkontrollen:

WB : Maushirngewebe, Mausnierengewebe, Raji-
Zellen, Rattenhirngewebe, Rattennierengewebe

IF : MCF-7-Zellen,

Hintergrundinformationen

The N-acetylneuraminat Lyase(NPL) from human (hNAL) which consists of 320 amino acids, has a molecular mass of 35.2 kDa and it catalyses the reversible aldol reaction of sialic acid, and has been extensively used in the synthesis of sialic acids and its analogues(PMID:19057931). The enzyme is widely distributed and are present in numerous pro- and eukaryotic cells, in which they are localized only in the cytosol(PMID:12453637). It belongs to the DHDPS family and has 5 isoforms produced by alternative splicing.

Lagerung

Lagerungsbedingungen:

Bei -20°C lagern. Nach dem Versand ein Jahr lang stabil

Lagerungspuffer:

PBS mit 0.02% Natriumazid und 50% Glycerin pH 7.3.

Aliquotieren ist nicht notwendig bei -20°C Lagerung

***** 20ul-Größen enthalten 0.1% BSA**

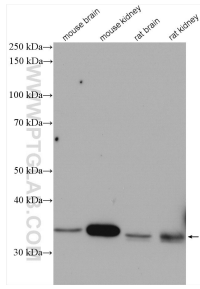
For technical support and original validation data for this product please contact:

T: 1 (888) 4PTGLAB (1-888-478-4522) (toll free
in USA), or 1(312) 455-8498 (outside USA)

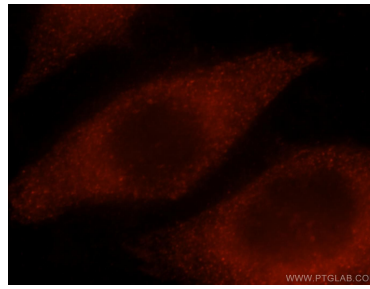
E: proteintech@ptglab.com
W: ptglab.com

This product is exclusively available under Proteintech Group brand and is not available to purchase from any other manufacturer.

Ausgewählte Validierungsdaten



Various lysates were subjected to SDS PAGE followed by western blot with 16715-1-AP (NPL antibody) at dilution of 1:1000 incubated at room temperature for 1.5 hours.



Immunofluorescent analysis of MCF-7 cells, using NPL antibody 16715-1-AP at 1:25 dilution and Rhodamine-labeled goat anti-rabbit IgG (red).