

Nur für Forschungszwecke

# CPOX Polyklonaler Antikörper

Katalog-Nr.:16724-1-AP



## Allgemeine Informationen

<b>Katalog-Nr.:</b> 16724-1-AP	<b>GenBank-Zugangsnummer:</b> BC017210	<b>Reinigungsmethode:</b> Antigen-Affinitätsreinigung
<b>Größe:</b> 150ul , Konzentration: 700 µg/ml von Nanodrop;	<b>GeneID (NCBI):</b> 1371	<b>Empfohlene Verdünnungen:</b> WB 1:1000-1:4000 IP 0.5-4.0 ug für IP und 1:500-1:2000 für WB IHC 1:20-1:200
<b>Wirt:</b> Kaninchen	<b>Vollständiger Name:</b> coproporphyrinogen oxidase	
<b>Isotyp:</b> IgG	<b>Berechnete Masse:</b> 454 aa, 50 kDa	
<b>Immunogen Katalognummer:</b> AG10164	<b>Beobachtete Masse:</b> 36 kDa	

## Anwendungen

### Geprüfte Anwendungen:

IHC, IP, WB, ELISA

### Getestete Reaktivität:

Human, Maus, Ratte

**Hinweis-IHC: Antigendemaskierung mit TE-Puffer pH 9,0 empfohlen. (\*) Wahlweise kann die Antigendemaskierung auch mit Citratpuffer pH 6,0 erfolgen.**

### Positivkontrollen:

**WB :** HepG2-Zellen, humanes Lebergewebe, K-562-Zellen, Mauslebergewebe, Rattenlebergewebe

**IP :** HepG2-Zellen,

**IHC :** humanes Lebergewebe, humanes Hodengewebe

## Hintergrundinformationen

CPOX(Coproporphyrinogen-III oxidase, mitochondrial) is also named as CPO and CPX. Human CPO is a 76 kDa protein that is active as a homodimer in the mitochondrial intermembrane space(PMID:16159891).Mutations in human CPO gene predict the clinical outcome of the disease, with either hepatic hereditary coproporphyrin or hematological manifestations of erythropoietic protoporphyria.CPOX has a transit peptide of 110 aa and the chain contains 344 aa.

## Lagerung

### Lagerungsbedingungen:

Bei -20°C lagern. Nach dem Versand ein Jahr lang stabil

### Lagerungspuffer:

PBS mit 0.02% Natriumazid und 50% Glycerin pH 7.3.

Aliquotieren ist nicht notwendig bei -20°C Lagerung

\*\*\* 20ul-Größen enthalten 0.1% BSA

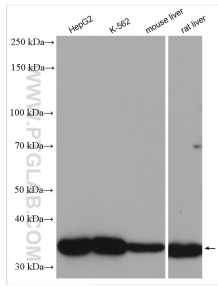
For technical support and original validation data for this product please contact:

T: 1 (888) 4PTGLAB (1-888-478-4522) (toll free in USA), or 1(312) 455-8498 (outside USA)

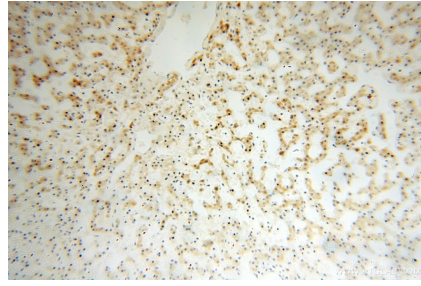
E: proteintech@ptglab.com  
W: ptglab.com

This product is exclusively available under Proteintech Group brand and is not available to purchase from any other manufacturer.

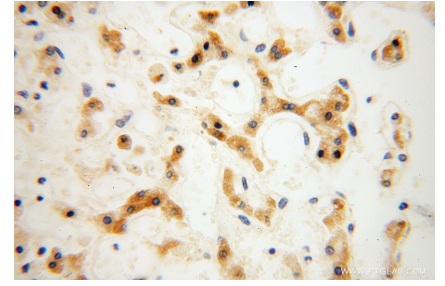
## Ausgewählte Validierungsdaten



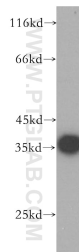
Various lysates were subjected to SDS PAGE followed by western blot with 16724-1-AP (CPOX antibody) at dilution of 1:2000 incubated at room temperature for 1.5 hours.



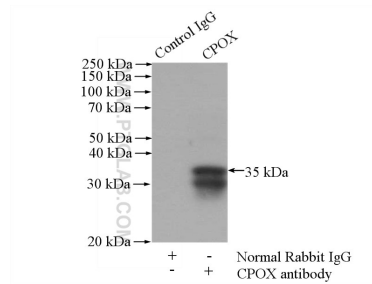
Immunohistochemical analysis of paraffin-embedded human liver using 16724-1-AP (CPOX antibody) at dilution of 1:100 (under 10x lens).



Immunohistochemical analysis of paraffin-embedded human liver using 16724-1-AP (CPOX antibody) at dilution of 1:100 (under 40x lens).



K-562 cells were subjected to SDS PAGE followed by western blot with 16724-1-AP (CPOX antibody) at dilution of 1:1000 incubated at room temperature for 1.5 hours.



IP Result of anti-CPOX (IP:16724-1-AP, 4ug; Detection:16724-1-AP 1:1000) with HepG2 cells lysate 1800ug.