

## Allgemeine Informationen

Katalog-Nr.:  
16731-1-AP

Größe:  
150ul, Konzentration: 1000 µg/ml von5394  
Nanodrop und 533 µg/ml durch die  
Bradford-Methode mit BSA als  
Standard;

Wirt:  
Kaninchen

Isotyp:  
IgG

Immunogen Katalognummer:  
AG10189

GenBank-Zugangsnummer:  
BC073788

GeneID (NCBI):  
Vollständiger Name:  
exosome component 10

Berechnete Masse:  
885 aa, 101 kDa

Beobachtete Masse:  
100 kDa

Reinigungsmethode:  
Antigen-Affinitätsreinigung

Empfohlene Verdünnungen:  
WB 1:1000-1:8000  
IP 0.5-4.0 µg für IP und 1:500-1:1000  
für WB  
IHC 1:50-1:500  
IF 1:20-1:200

## Anwendungen

Geprüfte Anwendungen:

IF, IHC, IP, WB, ELISA

Getestete Reaktivität:

Human, Maus

**Hinweis-IHC: Antigenmaskierung mit TE-Puffer pH 9,0 empfohlen. (\*) Wahlweise kann die Antigenmaskierung auch mit Citratpuffer pH 6,0 erfolgen.**

Positivkontrollen:

WB : BxPC-3-Zellen, HeLa-Zellen, Mausmilzgewebe

IP : HeLa-Zellen,

IHC : humanes Magenkrebsgewebe, humanes Leberkarzinomgewebe

IF : HeLa-Zellen, NIH/3T3-Zellen

## Hintergrundinformationen

About 50% of patients with polymyositis/scleroderma (PM-Scl) overlap syndrome are reported to have autoantibodies to a nuclear/nucleolar particle termed PM-Scl. Exosome component 10 (EXOSC10), also named autoantigen PM/Scl 2, is the 100 kDa antigen component of PM-Scl and is recognized by most sera of PM-Scl patients. EXOSC10 is strongly enriched in the nucleolus and a small amount has been found in cytoplasm supporting the existence of a nucleolar RNA exosome complex form. As a putative catalytic component of the RNA exosome complex which has 3'->5' exonuclease activity, EXOSC10 participates in a multitude of cellular RNA processing and degradation events.

## Lagerung

Lagerungsbedingungen:

Bei -20°C lagern. Nach dem Versand ein Jahr lang stabil

Lagerungspuffer:

PBS mit 0.02% Natriumazid und 50% Glycerin pH 7.3.

Aliquotieren ist nicht notwendig bei -20°C Lagerung

\*\*\* 20ul-Größen enthalten 0.1% BSA

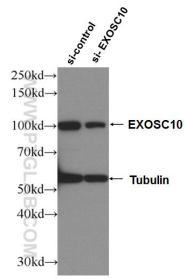
For technical support and original validation data for this product please contact:

T: 1 (888) 4PTGLAB (1-888-478-4522) (toll free in USA), or 1(312) 455-8498 (outside USA)

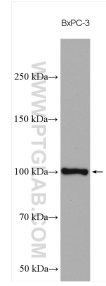
E: proteintech@ptglab.com  
W: ptglab.com

This product is exclusively available under Proteintech Group brand and is not available to purchase from any other manufacturer.

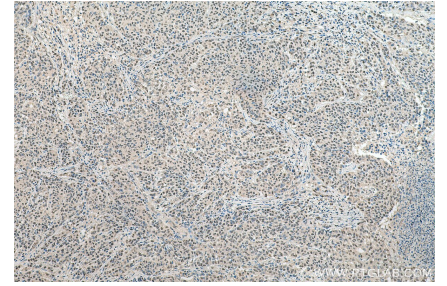
## Ausgewählte Validierungsdaten



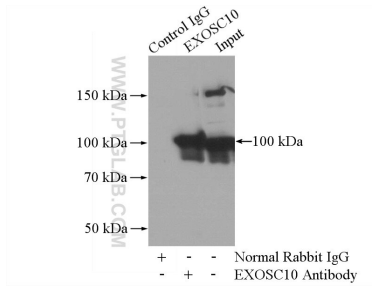
WB result of EXOSC10 antibody (16731-1-AP; 1:10000; incubated at room temperature for 1.5 hours) with sh-Control and sh-EXOSC10 transfected HeLa cells.



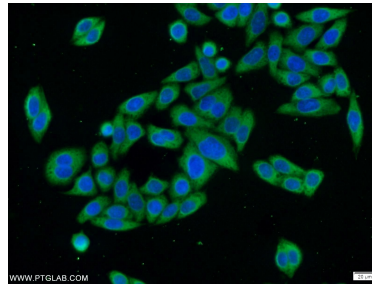
BxPC-3 cells were subjected to SDS PAGE followed by western blot with 16731-1-AP (EXOSC10 antibody) at dilution of 1:4000 incubated at room temperature for 1.5 hours.



Immunohistochemical analysis of paraffin-embedded human stomach cancer tissue slide using 16731-1-AP (EXOSC10 antibody) at dilution of 1:200 (under 10x lens). Heat mediated antigen retrieval with Tris-EDTA buffer (pH 9.0).



IP Result of anti-EXOSC10 (IP:16731-1-AP, 4ug; Detection:16731-1-AP 1:700) with HeLa cells lysate 1200ug.



Immunofluorescent analysis of HeLa cells using 16731-1-AP (EXOSC10 antibody) at dilution of 1:50 and Alexa Fluor 488-conjugated AffiniPure Goat Anti-Rabbit IgG(H+L).