

Allgemeine Informationen

Katalog-Nr.: 16757-1-AP	GenBank-Zugangsnummer: BC062555	Reinigungsmethode: Antigen-Affinitätsreinigung
Größe: 150ul , Konzentration: 500 µg/ml von Nanodrop;	GeneID (NCBI): 84706	Empfohlene Verdünnungen: WB 1:500-1:3000 IP 0.5-4.0 ug für IP und 1:500-1:1000 für WB
Wirt: Kaninchen	Vollständiger Name: glutamic pyruvate transaminase (alanine aminotransferase) 2	IHC 1:50-1:500 IF 1:20-1:200
Isotyp: IgG	Berechnete Masse: 523 aa, 58 kDa	
Immunogen Katalognummer: AG10273	Beobachtete Masse: 58 kDa, 47 kDa	

Anwendungen

Geprüfte Anwendungen:

IF, IHC, IP, WB, ELISA

In Publikationen genannte Anwendungen:

IF, IHC, WB

Getestete Reaktivität:

Human, Maus, Ratte

Zitierte Arten:

Human, Maus

Positivkontrollen:

WB : Mauslebergewebe, HepG2-Zellen, Mausnierengewebe

IP : Mausnierengewebe,

IHC : humanes Skelettmuskelgewebe, Maushirngewebe

IF : HepG2-Zellen,

Hinweis-IHC: Antigenmaskierung mit TE-Puffer pH 9,0 empfohlen. (*) Wahlweise kann die Antigenmaskierung auch mit Citratpuffer pH 6,0 erfolgen.

Hintergrundinformationen

GPT2 (Alanine aminotransferase 2; ALT2) is a key enzyme in intermediary metabolism, catalysing the reversible transfer of the amino group of glutamate to pyruvate, yielding alanine and ketoglutarate. GPT2 protein localizes to mitochondria, and is mainly expressed in the pancreas, brain, adrenal gland, skeletal muscle and heart. Serum GPT2 is a useful marker for liver damage. Recently mutation of GPT2 has been reported to be a cause of neural disorder (27601654). 16757-1-AP antibody recognizes two different isoforms of GPT2 protein.

Bemerkenswerte Veröffentlichungen

Verfasser	Pubmed ID	Journal	Anwendung
Qing Ouyang	27601654	Proc Natl Acad Sci U S A	WB,IF
Bo Zhang	35499760	Cancer Res	WB
Xiao Zhang	33897873	Theranostics	WB

Lagerung

Lagerungsbedingungen:

Bei -20°C lagern. Nach dem Versand ein Jahr lang stabil

Lagerungspuffer:

PBS mit 0.02% Natriumazid und 50% Glycerin pH 7.3.

Aliquotieren ist nicht notwendig bei -20°C Lagerung

***** 20ul-Größen enthalten 0.1% BSA**

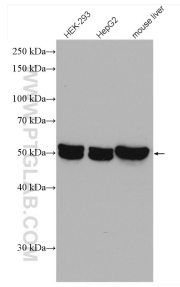
For technical support and original validation data for this product please contact:

T: 1 (888) 4PTGLAB (1-888-478-4522) (toll free in USA), or 1(312) 455-8498 (outside USA)

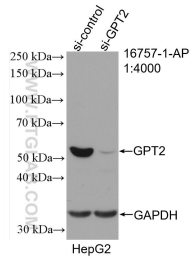
E: proteintech@ptglab.com
W: ptglab.com

This product is exclusively available under Proteintech Group brand and is not available to purchase from any other manufacturer.

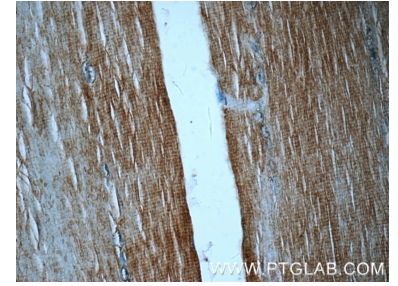
Ausgewählte Validierungsdaten



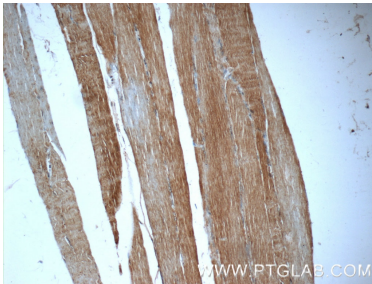
Various lysates were subjected to SDS PAGE followed by western blot with 16757-1-AP (GPT2 antibody) at dilution of 1:1500 incubated at room temperature for 1.5 hours.



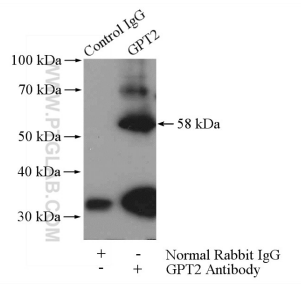
WB result of GPT2 antibody (16757-1-AP; 1:4000; incubated at room temperature for 1.5 hours) with sh-Control and sh-GPT2 transfected HepG2 cells.



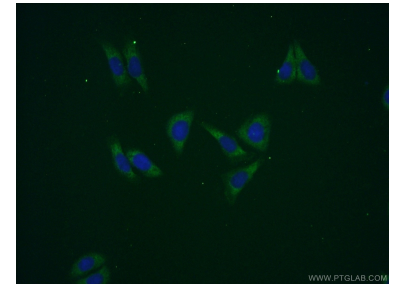
Immunohistochemical analysis of paraffin-embedded human skeletal muscle tissue slide using 16757-1-AP (GPT2 Antibody) at dilution of 1:50 (under 40x lens).



Immunohistochemical analysis of paraffin-embedded human skeletal muscle tissue slide using 16757-1-AP (GPT2 Antibody) at dilution of 1:50 (under 10x lens).



IP Result of anti-GPT2 (IP:16757-1-AP, 4ug; Detection:16757-1-AP 1:500) with mouse kidney tissue lysate 7200ug.



Immunofluorescent analysis of (-20°C Ethanol) fixed HepG2 cells using 16757-1-AP (GPT2 antibody) at dilution of 1:50 and Alexa Fluor 488-conjugated AffiniPure Goat Anti-Rabbit IgG(H+L).