

Nur für Forschungszwecke

IL-1 Beta Polyklonaler Antikörper

Katalog-Nr.:16806-1-AP

477 Publikationen



Allgemeine Informationen

Katalog-Nr.: 16806-1-AP	GenBank-Zugangsnummer: BC008678	Reinigungsmethode: Antigen-Affinitätsreinigung
Größe: 150ul , Konzentration: 700 µg/ml von Nanodrop;	GeneID (NCBI): 3553	Empfohlene Verdünnungen: WB 1:500-1:2000 IHC 1:50-1:500
Wirt: Kaninchen	Vollständiger Name: interleukin 1, beta	
Isotyp: IgG	Berechnete Masse: 269 aa, 31 kDa	
Immunogen Katalognummer: AG10295	Beobachtete Masse: 30-35 kDa	

Anwendungen

Geprüfte Anwendungen:
FC, IHC, WB, ELISA

In Publikationen genannte Anwendungen:
ELISA, IF, IHC, WB

Getestete Reaktivität:
Human

Zitierte Arten:
Hausschwein, Human, Hund, Kaninchen, Zebrafisch

Hinweis-IHC: Antigenmaskierung mit TE-Puffer pH 9,0 empfohlen. (*) Wahlweise kann die Antigenmaskierung auch mit Citratpuffer pH 6,0 erfolgen.

Positivkontrollen:

WB : mit LPS und Proteinttransportinhibitor behandelte THP-1-Zellen, A431-Zellen, humanes Nebennierengewebe

IHC : humanes Tonsillitisgewebe, humanes Nierengewebe

Hintergrundinformationen

Interleukin-1, produced mainly by blood monocytes, mediates the panoply of host reactions collectively known as acute phase response. It is identical to endogenous pyrogen. The multiple biologic activities that define IL1 are properties of a 15- to 18-kD protein that is derived from a 30- to 35-kD precursor. Interleukin 1β (IL-1B) is a member of the interleukin 1 cytokine family. It is a pro-inflammatory cytokine against infection, playing an important role in the pathogenesis of cancers. It signals through various adaptor proteins and kinases that lead to activation of numerous downstream targets. The expression level of IL-1B is very low.

Bemerkenswerte Veröffentlichungen

Verfasser	Pubmed ID	Journal	Anwendung
Yangfei Yi	36178080	Orthop Surg	WB
JiangFan Yu	36248980	Front Oncol	WB
Chuyue Zhang	30272163	Hum Reprod	WB

Lagerung

Lagerungsbedingungen:

Bei -20°C lagern. Nach dem Versand ein Jahr lang stabil

Lagerungspuffer:

PBS mit 0.02% Natriumazid und 50% Glycerin pH 7.3.

Aliquotieren ist nicht notwendig bei -20°C Lagerung

*** 20ul-Größen enthalten 0.1% BSA

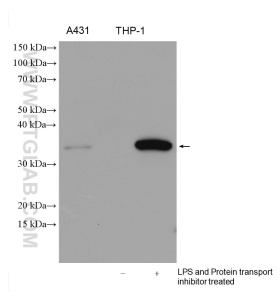
For technical support and original validation data for this product please contact:

T: 1 (888) 4PTGLAB (1-888-478-4522) (toll free in USA), or 1(312) 455-8498 (outside USA)

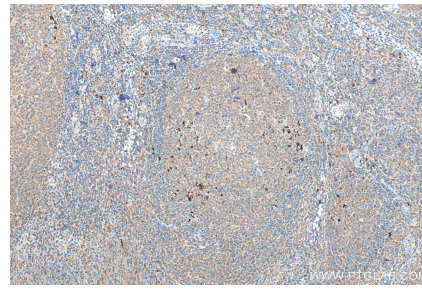
E: proteintech@ptglab.com
W: ptglab.com

This product is exclusively available under Proteintech Group brand and is not available to purchase from any other manufacturer.

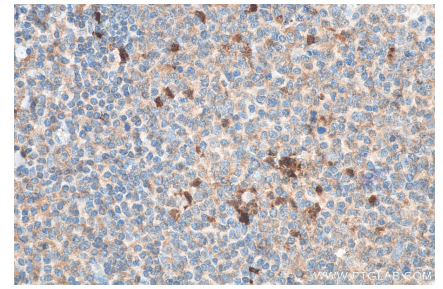
Ausgewählte Validierungsdaten



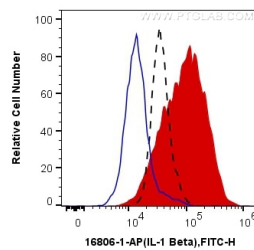
A431 cells, untreated THP-1 cells, THP-1 cells (treated with 100 ng/ml LPS for 3h, then add 300 ng/ml protein transport inhibitor for 3h) were subjected to SDS PAGE followed by western blot with 16806-1-AP (IL-1 Beta antibody) at dilution of 1:1000 incubated at room temperature for 1.5 hours.



Immunohistochemical analysis of paraffin-embedded human tonsillitis tissue slide using 16806-1-AP (IL-1 Beta antibody) at dilution of 1:200 (under 10x lens). Heat mediated antigen retrieval with Tris-EDTA buffer (pH 9.0).



Immunohistochemical analysis of paraffin-embedded human tonsillitis tissue slide using 16806-1-AP (IL-1 Beta antibody) at dilution of 1:200 (under 40x lens). Heat mediated antigen retrieval with Tris-EDTA buffer (pH 9.0).



1X10⁶ THP-1 cells untreated (dashed lines), LPS treated (red) were intracellularly stained with 0.4 ug Anti-Human IL-1 Beta (16806-1-AP) and CoraLite®488-Conjugated AffiniPure Goat Anti-Rabbit IgG(H+L) at dilution 1:1000 (red), or 0.4 ug Control Antibody (blue). Cells were fixed with 4% PFA and permeabilized with Flow Cytometry Perm Buffer (PF00011-C).