

Allgemeine Informationen

Katalog-Nr.: 16813-1-AP	GenBank-Zugangsnummer: BC068046	Reinigungsmethode: Antigen-Affinitätsreinigung
Größe: 150ul , Konzentration: 800 µg/ml von Nanodrop und 333 µg/ml durch die Bradford-Methode mit BSA als Standard;	GeneID (NCBI): 126393	Empfohlene Verdünnungen: WB 1:1000-1:4000 IHC 1:50-1:200 IF 1:50-1:500
Wirt: Kaninchen	Vollständiger Name: heat shock protein, alpha-crystallin-related, B6	
Isotyp: IgG	Berechnete Masse: 160 aa, 17 kDa	
Immunogen Katalognummer: AG10352	Beobachtete Masse: 18-20 kDa	

Anwendungen

Geprüfte Anwendungen: IF, IHC, WB, ELISA	Positivkontrollen:
Getestete Reaktivität: Human, Maus, Ratte	WB : Rattenherzgewebe, Mausherzgewebe
Hinweis-IHC: Antigenmaskierung mit TE-Puffer pH 9,0 empfohlen. (*) Wahlweise kann die Antigenmaskierung auch mit Citratpuffer pH 6,0 erfolgen.	IHC : Mausherzgewebe, Maushirngewebe
	IF : Mausherzgewebe,

Hintergrundinformationen

Hsp20 is a member of the small heat shock superfamily of proteins that function as chaperones to prevent protein misfolding through adenosine triphosphate-independent processes. It is widely expressed but is most abundant in cardiac, skeletal, and smooth muscles. Phosphorylation of HSP20 at Ser16 was elevated in human failing hearts as well as in murine hearts after I/R injury indicating its cardioprotective function.

Lagerung

Lagerungsbedingungen:
Bei -20°C lagern. Nach dem Versand ein Jahr lang stabil
Lagerungspuffer:
PBS mit 0.02% Natriumazid und 50% Glycerin pH 7.3.
Aliquotieren ist nicht notwendig bei -20°C Lagerung

*** 20ul-Größen enthalten 0.1% BSA

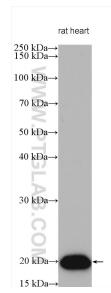
For technical support and original validation data for this product please contact:

T: 1 (888) 4PTGLAB (1-888-478-4522) (toll free in USA), or 1(312) 455-8498 (outside USA)

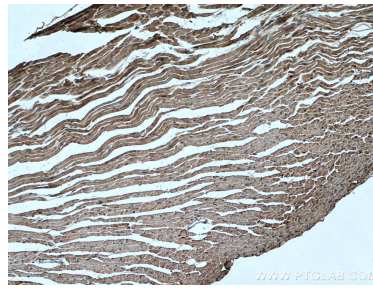
E: proteintech@ptglab.com
W: ptglab.com

This product is exclusively available under Proteintech Group brand and is not available to purchase from any other manufacturer.

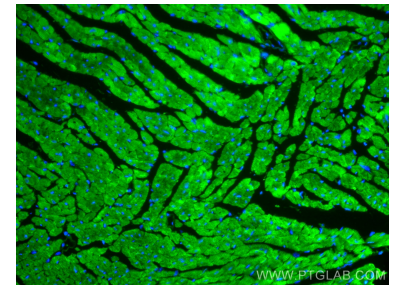
Ausgewählte Validierungsdaten



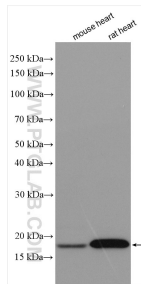
rat heart tissues were subjected to SDS PAGE followed by western blot with 16813-1-AP (HSP20 antibody) at dilution of 1:4000 incubated at room temperature for 1.5 hours.



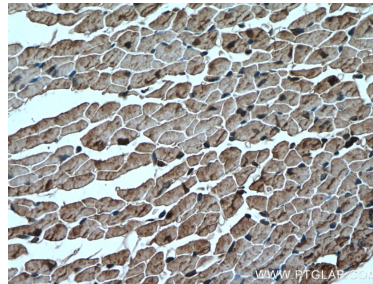
Immunohistochemical analysis of paraffin-embedded mouse heart tissue slide using 16813-1-AP (HSP20 antibody) at dilution of 1:200 (under 10x lens. Heat mediated antigen retrieval with Tris-EDTA buffer (pH 9.0).



Immunofluorescent analysis of (4% PFA) fixed mouse heart tissue using HSP20 antibody (16813-1-AP) at dilution of 1:200 and CoraLite®488-Conjugated AffiniPure Goat Anti-Rabbit IgG(H+L).



Various lysates were subjected to SDS PAGE followed by western blot with 16813-1-AP (HSP20 antibody) at dilution of 1:8000 incubated at room temperature for 1.5 hours.



Immunohistochemical analysis of paraffin-embedded mouse heart tissue slide using 16813-1-AP (HSP20 antibody) at dilution of 1:200 (under 40x lens. Heat mediated antigen retrieval with Tris-EDTA buffer (pH 9.0).