

Nur für Forschungszwecke

# p130Cas Polyklonaler Antikörper

Katalog-Nr.:16815-1-AP



## Allgemeine Informationen

Katalog-Nr.:  
16815-1-AP

Größe:  
150ul, Konzentration: 550 µg/ml von  
Nanodrop und 267 µg/ml durch die  
Bradford-Methode mit BSA als  
Standard;

Wirt:  
Kaninchen

Isotyp:  
IgG

Immunogen Katalognummer:  
AG10354

GenBank-Zugangsnummer:  
BC062556

GeneID (NCBI):  
9564

Vollständiger Name:  
breast cancer anti-estrogen resistance  
1

Berechnete Masse:  
870 aa, 93 kDa

Beobachtete Masse:  
116 kDa

Reinigungsmethode:

Antigen-Affinitätsreinigung

Empfohlene Verdünnungen:

WB 1:1000-1:8000

IP 0.5-4.0 µg für IP und 1:500-1:1000

für WB

IHC 1:50-1:500

IF 1:50-1:500

## Anwendungen

Geprüfte Anwendungen:

FC, IF, IHC, IP, WB, ELISA

Getestete Reaktivität:

Human, Maus, Ratte

**Hinweis-IHC: Antigendemaskierung mit TE-  
Puffer pH 9,0 empfohlen. (\*) Wahlweise  
kann die Antigendemaskierung auch mit  
Citratpuffer pH 6,0 erfolgen.**

Positivkontrollen:

WB : HeLa-Zellen, A431-Zellen, HepG2-Zellen, T-47D-  
Zellen

IP : RAW 264.7-Zellen,

IHC : humanes Kolonkarzinomgewebe,

IF : HeLa-Zellen,

## Hintergrundinformationen

### Lagerung

Lagerungsbedingungen:

Bei -20°C lagern. Nach dem Versand ein Jahr lang stabil

Lagerungspuffer:

PBS mit 0.02% Natriumazid und 50% Glycerin pH 7.3.

Aliquotieren ist nicht notwendig bei -20°C Lagerung

\*\*\* 20ul-Größen enthalten 0.1% BSA

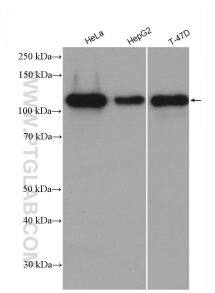
For technical support and original validation data for this product please contact:

T: 1 (888) 4PTGLAB (1-888-478-4522) (toll free  
in USA), or 1(312) 455-8498 (outside USA)

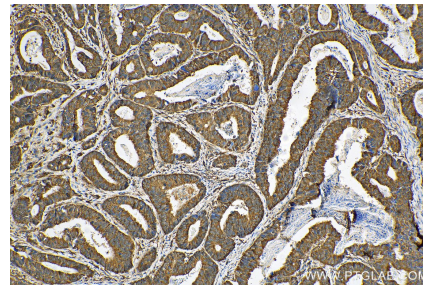
E: proteintech@ptglab.com  
W: ptglab.com

This product is exclusively available under Proteintech  
Group brand and is not available to purchase from any  
other manufacturer.

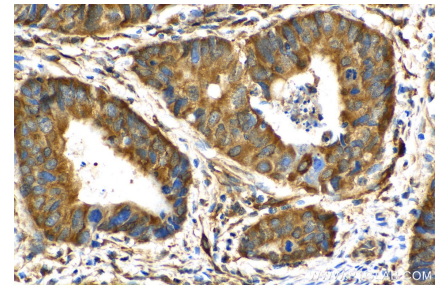
## Ausgewählte Validierungsdaten



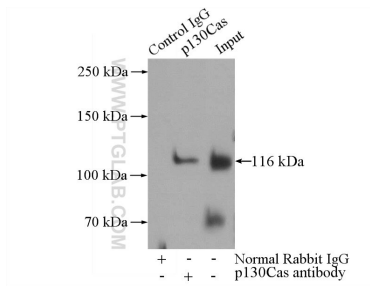
Various lysates were subjected to SDS PAGE followed by western blot with 16815-1-AP (p130Cas antibody) at dilution of 1:4000 incubated at room temperature for 1.5 hours.



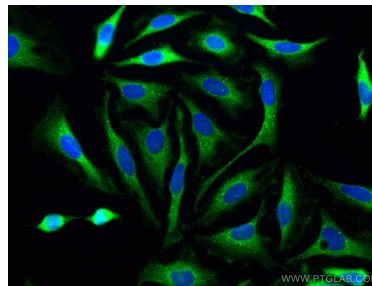
Immunohistochemical analysis of paraffin-embedded human colon cancer tissue slide using 16815-1-AP (p130Cas antibody) at dilution of 1:200 (under 10x lens). Heat mediated antigen retrieval with Tris-EDTA buffer (pH 9.0).



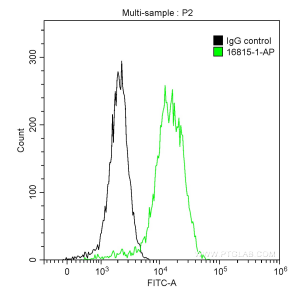
Immunohistochemical analysis of paraffin-embedded human colon cancer tissue slide using 16815-1-AP (p130Cas antibody) at dilution of 1:200 (under 40x lens). Heat mediated antigen retrieval with Tris-EDTA buffer (pH 9.0).



IP Result of anti-p130Cas (IP:16815-1-AP, 4 $\mu$ g; Detection:16815-1-AP 1:600) with RAW 264.7 cells lysate 4000 $\mu$ g.



Immunofluorescent analysis of (-20°C Methanol) fixed HeLa cells using p130Cas antibody (16815-1-AP) at dilution of 1:200 and CoraLite@488-Conjugated AffiniPure Goat Anti-Rabbit IgG(H+L).



1x10<sup>6</sup> A431 cells were stained with 0.2  $\mu$ g Anti-Human p130Cas (16815-1-AP) and CoraLite@488-Conjugated AffiniPure Goat Anti-Rabbit IgG(H+L) at dilution 1:1000 (green), or stained with 0.2  $\mu$ g isotype control and CoraLite@488-Conjugated AffiniPure Goat Anti-Rabbit IgG(H+L) at dilution 1:1000 (black). Cells were fixed with 90% MeOH.