

Allgemeine Informationen

Katalog-Nr.: 16836-1-AP	GenBank-Zugangsnummer: BC052271	Reinigungsmethode: Antigen-Affinitätsreinigung
Größe: 150ul , Konzentration: 700 µg/ml von Nanodrop;	GeneID (NCBI): 477	Empfohlene Verdünnungen: WB 1:500-1:2000 IHC 1:50-1:500 IF 1:10-1:100
Wirt: Kaninchen	Vollständiger Name: ATPase, Na ⁺ /K ⁺ transporting, alpha 2 (+) polypeptide	
Isotyp: IgG	Berechnete Masse: 1020 aa, 112 kDa	
Immunogen Katalognummer: AG10515	Beobachtete Masse: 97-100 kDa	

Anwendungen

Geprüfte Anwendungen:

FC, IF, IHC, WB, ELISA

In Publikationen genannte Anwendungen:

IF, IHC, WB

Getestete Reaktivität:

Human, Maus, Ratte

Zitierte Arten:

Human, Hund, Maus, Ratte

Hinweis-IHC: Antigendemaskierung mit TE-Puffer pH 9,0 empfohlen. (*) Wahlweise kann die Antigendemaskierung auch mit Citratpuffer pH 6,0 erfolgen.

Positivkontrollen:

WB : bei 37°C inkubiertes Mausherzgewebe, bei 37°C inkubiertes Maus-Skelettmuskelgewebe

IHC : Mausherzgewebe, humanes Hautgewebe, humanes Herzgewebe, humanes Hodengewebe, humanes Nierengewebe

IF : HeLa-Zellen,

Hintergrundinformationen

ATP1A2 (Na⁺/K⁺-ATPase α-2 subunit) is the catalytic component of the active enzyme Na⁺/K⁺-ATPase, which catalyzes the hydrolysis of ATP coupled with the exchange of sodium and potassium ions across the plasma membrane. The Na⁺/K⁺-ATPase is composed of a larger catalytic α-subunit (~110 kDa) and a small β-subunit (~55 kDa). The α subunit has four isoforms identified to date: α1, α2, α3 and α4. The α1 isoform is expressed ubiquitously but the α2 isoform is present largely in the skeletal muscle, heart and vascular smooth muscle. The α3 isoform is found almost exclusively in neurons and ovaries. The α4 isoform is expressed in sperm. This antibody was raised against the internal region of the human ATP1A2 and can recognize all the isoforms of a subunit. The 65kDa band detected occasionally may be the degradation product of ATP1A2.

Bemerkenswerte Veröffentlichungen

Verfasser	Pubmed ID	Journal	Anwendung
Ji Zhu	28970012	Eur J Pharmacol	WB
Yanglei Jia	30245637	Front Physiol	WB
Mariarosaria Cammarota	34481380	Biomed Pharmacother	WB,IF

Lagerung

Lagerungsbedingungen:

Bei -20°C lagern. Nach dem Versand ein Jahr lang stabil

Lagerungspuffer:

PBS mit 0.02% Natriumazid und 50% Glycerin pH 7.3.

Aliquotieren ist nicht notwendig bei -20°C Lagerung

***** 20ul-Größen enthalten 0.1% BSA**

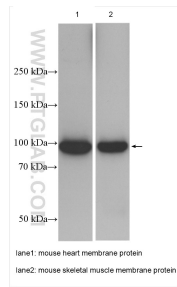
For technical support and original validation data for this product please contact:

T: 1 (888) 4PTGLAB (1-888-478-4522) (toll free in USA), or 1(312) 455-8498 (outside USA)

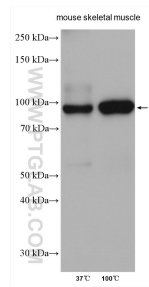
E: proteintech@ptglab.com
 W: ptglab.com

This product is exclusively available under Proteintech Group brand and is not available to purchase from any other manufacturer.

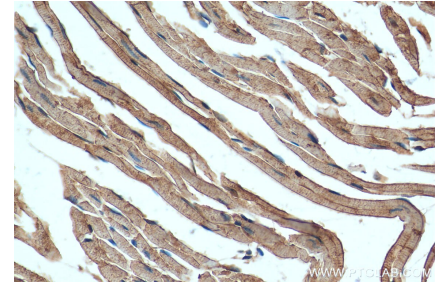
Ausgewählte Validierungsdaten



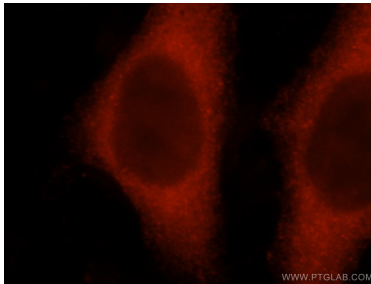
Various lysates were subjected to SDS PAGE followed by western blot with 16836-1-AP (ATP1A2 antibody) at dilution of 1:1000 incubated at room temperature for 1.5 hours.



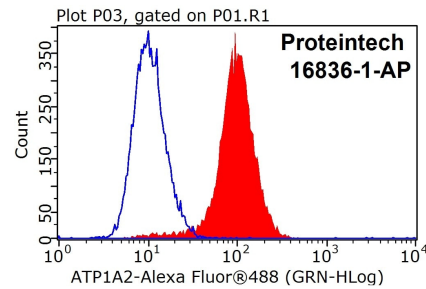
37 °C incubated or boiled mouse skeletal muscle lysates were subjected to SDS PAGE followed by western blot with 16836-1-AP (ATP1A2 antibody) at dilution of 1:2000 incubated at room temperature for 1.5 hours.



Immunohistochemical analysis of paraffin-embedded mouse heart tissue slide using 16836-1-AP (ATP1A2 antibody) at dilution of 1:200 (under 40x lens). Heat mediated antigen retrieval with Tris-EDTA buffer (pH 9.0).



Immunofluorescent analysis of HeLa cells, using ATP1A2 antibody 16836-1-AP at 1:25 dilution and Rhodamine-labeled goat anti-rabbit IgG (red).



1x10⁶ HeLa cells were stained with 0.5ug ATP1A2 antibody (16836-1-AP, red) and control antibody (blue). Fixed with 4% PFA blocked with 3% BSA (30 min). FITC-Goat anti-Rabbit IgG with dilution 1:100.