

Nur für Forschungszwecke

# Cytokeratin 1-specific Polyklonaler Antikörper



Katalog-Nr.:16848-1-AP

11 Publikationen

## Allgemeine Informationen

<b>Katalog-Nr.:</b> 16848-1-AP	<b>GenBank-Zugangsnummer:</b> NM_006121	<b>Reinigungsmethode:</b> Antigen-Affinitätsreinigung
<b>Größe:</b> 150ul , Konzentration: 900 µg/ml von Nanodrop;	<b>GeneID (NCBI):</b> 3848	<b>Empfohlene Verdünnungen:</b> WB 1:500-1:2000
<b>Wirt:</b> Kaninchen	<b>Vollständiger Name:</b> keratin 1	IP 0.5-4.0 ug für IP und 1:500-1:1000 für WB
<b>Isotyp:</b> IgG	<b>Berechnete Masse:</b> 66 kDa	IHC 1:20-1:200
	<b>Beobachtete Masse:</b> 67 kDa	IF 1:20-1:200

## Anwendungen

### Geprüfte Anwendungen:

IF, IHC, IP, WB, ELISA

### In Publikationen genannte Anwendungen:

IF, IHC, WB

### Getestete Reaktivität:

Human, Maus, Ratte

### Zitierte Arten:

Human, Maus, Ziege

**Hinweis-IHC: Antigendemaskierung mit TE-Puffer pH 9,0 empfohlen. (\*) Wahlweise kann die Antigendemaskierung auch mit Citratpuffer pH 6,0 erfolgen.**

### Positivkontrollen:

WB : Rattenhautgewebe, mouse skin

IP : A431-Zellen,

IHC : humanes Hautgewebe, humanes Lungenkarzinomgewebe

IF : A431-Zellen,

## Hintergrundinformationen

Keratins are a large family of proteins that form the intermediate filament cytoskeleton of epithelial cells, which are classified into two major sequence types. Type I keratins are a group of acidic intermediate filament proteins, including K9-K23, and the hair keratins Ha1-Ha8. Type II keratins are the basic or neutral counterparts to the acidic type I keratins, including K1-K8, and the hair keratins, Hb1-Hb6. Keratin-1 is type II keratin. It is a specific marker for terminal differentiation in mammalian epidermis. It is specifically expressed in the spinous and granular layers of the epidermis with family member KRT10 and mutations in these genes have been associated with bullous congenital ichthyosiform erythroderma. This antibody is specifically against keratin I.

## Bemerkenswerte Veröffentlichungen

Verfasser	Pubmed ID	Journal	Anwendung
Yanyun Wang	34687431	Hum Cell	IHC,IF
Shidi Wu	31790685	Life Sci	IHC
Jie Zhang	34060533	Front Endocrinol (Lausanne)	WB

## Lagerung

### Lagerungsbedingungen:

Bei -20°C lagern. Nach dem Versand ein Jahr lang stabil

### Lagerungspuffer:

PBS mit 0.02% Natriumazid und 50% Glycerin pH 7.3.

Aliquotieren ist nicht notwendig bei -20°C Lagerung

\*\*\* 20ul-Größen enthalten 0.1% BSA

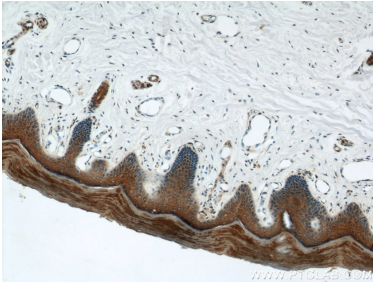
For technical support and original validation data for this product please contact:

T: 1 (888) 4PTGLAB (1-888-478-4522) (toll free in USA), or 1(312) 455-8498 (outside USA)

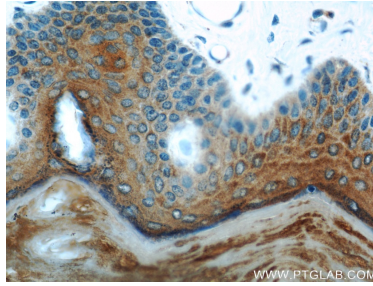
E: proteintech@ptglab.com  
W: ptglab.com

This product is exclusively available under Proteintech Group brand and is not available to purchase from any other manufacturer.

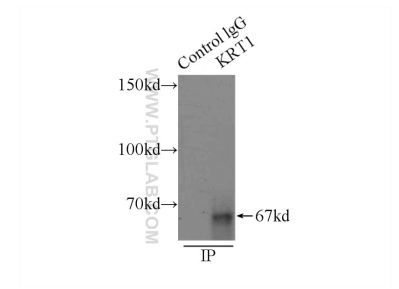
## Ausgewählte Validierungsdaten



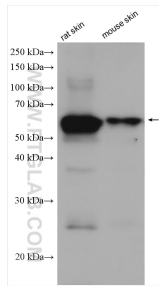
Immunohistochemical analysis of paraffin-embedded human skin using 16848-1-AP (Cytokeratin 1-specific antibody) at dilution of 1:100 (under 10x lens).



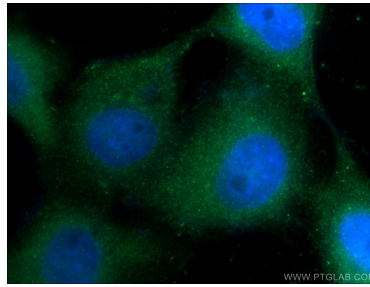
Immunohistochemical analysis of paraffin-embedded human skin using 16848-1-AP (Cytokeratin 1-specific antibody) at dilution of 1:100 (under 40x lens).



IP Result of anti-Cytokeratin 1-specific (IP:16848-1-AP, 3ug; Detection:16848-1-AP 1:500) with A431 cells lysate 3500ug.



Various lysates were subjected to SDS PAGE followed by western blot with 16848-1-AP (Cytokeratin 1-specific antibody) at dilution of 1:1000 incubated at room temperature for 1.5 hours.



Immunofluorescent analysis of A431 cells using 16848-1-AP (Cytokeratin 1-specific antibody) at dilution of 1:50 and Alexa Fluor 488-conjugated AffiniPure Goat Anti-Rabbit IgG(H+L).