

Nur für Forschungszwecke

Cytokeratin 6A-specific Polyklonaler Antikörper



Katalog-Nr.:16853-1-AP

Allgemeine Informationen

Katalog-Nr.:
16853-1-AP

Größe:
150ul , Konzentration: 400 µg/ml von
Nanodrop und 373 µg/ml durch die
Bradford-Methode mit BSA als
Standard;

Wirt:
Kaninchen

Isotyp:
IgG

GenBank-Zugangsnummer:
NM_005554

GeneID (NCBI):
3853

Vollständiger Name:
keratin 6A

Berechnete Masse:
60 kDa

Beobachtete Masse:
56 kDa

Reinigungsmethode:

Antigen-Affinitätsreinigung

Empfohlene Verdünnungen:

WB 1:500-1:1000

IP 0.5-4.0 ug für IP und 1:200-1:1000
für WB

Anwendungen

Geprüfte Anwendungen:

IP, WB, ELISA

Getestete Reaktivität:

Human, Maus

Positivkontrollen:

WB : A431-Zellen, HeLa-Zellen, humanes
Speichelgewebe, Mauhautgewebe

IP : HeLa-Zellen,

Hintergrundinformationen

Keratins are a large family of proteins that form the intermediate filament cytoskeleton of epithelial cells, which are classified into two major sequence types. Type I keratins are a group of acidic intermediate filament proteins, including K9-K23, and the hair keratins Ha1-Ha8. Type II keratins are the basic or neutral counterparts to the acidic type I keratins, including K1-K8, and the hair keratins, Hb1-Hb6. Keratin 6 is a type II keratin. It is used as marker for epidermal hyperproliferation and differentiation. Three keratin 6 isoforms were found, keratin 6A, 6B and 6C. They share more than 99% identical DNA sequence. This antibody is against all three isoforms of keratin 6, but it does not bind other keratins.

Lagerung

Lagerungsbedingungen:

Bei -20°C lagern. Nach dem Versand ein Jahr lang stabil

Lagerungspuffer:

PBS mit 0.02% Natriumazid und 50% Glycerin pH 7.3.

Aliquotieren ist nicht notwendig bei -20°C Lagerung

***** 20ul-Größen enthalten 0.1% BSA**

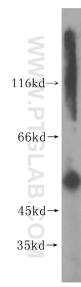
For technical support and original validation data for this product please contact:

T: 1 (888) 4PTGLAB (1-888-478-4522) (toll free
in USA), or 1(312) 455-8498 (outside USA)

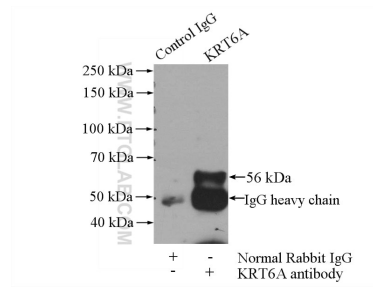
E: proteintech@ptglab.com
W: ptglab.com

This product is exclusively available under Proteintech Group brand and is not available to purchase from any other manufacturer.

Ausgewählte Validierungsdaten



A431 cells were subjected to SDS PAGE followed by western blot with 16853-1-AP (Cytokeratin 6A-specific antibody) at dilution of 1:300 incubated at room temperature for 1.5 hours.



IP Result of anti-Cytokeratin 6A-specific (IP:16853-1-AP, 4ug; Detection:16853-1-AP 1:300) with HeLa cells lysate 520ug.