

Nur für Forschungszwecke

RAB27A-specific Polyklonaler Antikörper



Katalog-Nr.:16868-1-AP

Vorgestelltes Produkt

1 Publikationen

Allgemeine Informationen

Katalog-Nr.:
16868-1-AP

Größe:
150ul , Konzentration: 133 µg/ml
durch die Bradford-Methode mit BSA
als Standard;

Wirt:
Kaninchen

Isotyp:
IgG

GenBank-Zugangsnummer:
NM_004580

GeneID (NCBI):
5873

Vollständiger Name:
RAB27A, member RAS oncogene
family

Berechnete Masse:
25 kDa

Beobachtete Masse:
25 kDa

Reinigungsmethode:

Antigen-Affinitätsreinigung

Empfohlene Verdünnungen:

WB 1:500-1:3000

IHC 1:50-1:500

Anwendungen

Geprüfte Anwendungen:

IHC, WB, ELISA

In Publikationen genannte Anwendungen:

WB

Getestete Reaktivität:

Human, Ratte

Zitierte Arten:

Maus

Positivkontrollen:

WB : HL-60-Zellen, K562, PC-12-Zellen, U-87 MG-Zellen

IHC : humanes Lymphomgewebe, humanes
Leberkarzinomgewebe

Hinweis-IHC: Antigendemaskierung mit TE-Puffer pH 9,0 empfohlen. (*) Wahlweise kann die Antigendemaskierung auch mit Citratpuffer pH 6,0 erfolgen.

Hintergrundinformationen

Rab27A is a member of a large family of Ras-related small GTPases. The protein is membrane-bound and may be involved in protein transport and small GTPase mediated signal transduction. Recent studies suggest that Rab27A is associated with melanosomes in pigmented cells and regulates melanosome transport via its interaction with actin-based cellular motors such as myosin Va and myosin VIIa. RAB27A is also required for regulated secretion in cytotoxic T lymphocytes. Rab27A is implicated in several diseases, including Griscelli syndrome, choroideremia, and the Hermansky-Pudlak syndrome mouse model, gunmetal.

Bemerkenswerte Veröffentlichungen

Verfasser	Pubmed ID	Journal	Anwendung
Lay Thant	35932574	Biochem Biophys Res Commun	WB

Lagerung

Lagerungsbedingungen:

Bei -20°C lagern. Nach dem Versand ein Jahr lang stabil

Lagerungspuffer:

PBS mit 0.02% Natriumazid und 50% Glycerin pH 7.3.

Aliquotieren ist nicht notwendig bei -20°C Lagerung

*** 20ul-Größen enthalten 0.1% BSA

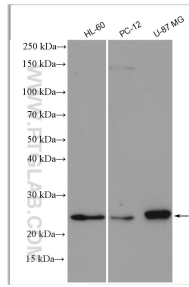
For technical support and original validation data for this product please contact:

T: 1 (888) 4PTGLAB (1-888-478-4522) (toll free
in USA), or 1(312) 455-8498 (outside USA)

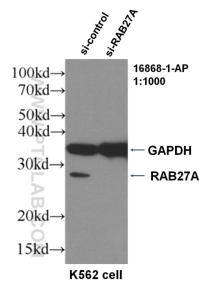
E: proteintech@ptglab.com
W: ptglab.com

This product is exclusively available under Proteintech Group brand and is not available to purchase from any other manufacturer.

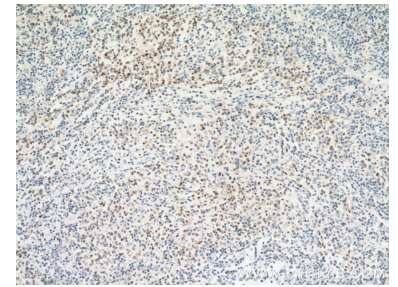
Ausgewählte Validierungsdaten



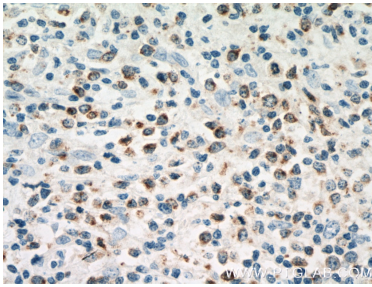
Various lysates were subjected to SDS PAGE followed by western blot with 16868-1-AP (RAB27A-specific antibody) at dilution of 1:1500 incubated at room temperature for 1.5 hours.



WB result of RAB27A antibody (16868-1-AP, 1:1000) with si-Control and si-RAB27A transfected K562 cells.



Immunohistochemical analysis of paraffin-embedded human lymphoma tissue slide using 16868-1-AP (RAB27A-specific antibody) at dilution of 1:200 (under 10x lens. Heat mediated antigen retrieval with Tris-EDTA buffer (pH 9.0).



Immunohistochemical analysis of paraffin-embedded human lymphoma tissue slide using 16868-1-AP (RAB27A-specific antibody) at dilution of 1:200 (under 40x lens. Heat mediated antigen retrieval with Tris-EDTA buffer (pH 9.0).