

Nur für Forschungszwecke

RPGR Polyklonaler Antikörper

Katalog-Nr.:16891-1-AP

2 Publikationen



Allgemeine Informationen

Katalog-Nr.: 16891-1-AP	GenBank-Zugangsnummer: BC031624	Reinigungsmethode: Antigen-Affinitätsreinigung
Größe: 150ul, Konzentration: 300 µg/ml von Nanodrop;	GeneID (NCBI): 6103	Empfohlene Verdünnungen: WB 1:500-1:1000 IHC 1:50-1:500 IF 1:10-1:100
Wirt: Kaninchen	Vollständiger Name: retinitis pigmentosa GTPase regulator	
Isotyp: IgG	Berechnete Masse: 113 kDa	
Immunogen Katalognummer: AG10405	Beobachtete Masse: 100-105 kDa, 70 kDa	

Anwendungen

Geprüfte Anwendungen:

IF, IHC, WB, ELISA

In Publikationen genannte Anwendungen:

WB

Getestete Reaktivität:

Human, Maus

Zitierte Arten:

Human

Positivkontrollen:

WB : Maus-Augengewebe, Mauslebergewebe, Maus-Retina-Gewebe, SH-SY5Y-Zellen, Y79-Zellen

IHC : Maus-Augengewebe, humanes Herzgewebe, humanes Nierengewebe

IF : hTERT-RPE1-Zellen,

Hinweis-IHC: Antigenmaskierung mit TE-Puffer pH 9,0 empfohlen. (*) Wahlweise kann die Antigenmaskierung auch mit Citratpuffer pH 6,0 erfolgen.

Hintergrundinformationen

RPGR is a protein with a series of six RCC1-like domains (RLDs), characteristic of the highly conserved guanine nucleotide exchange factors. The encoded protein is found in the Golgi body and interacts with RPGRIP1. This protein localizes to the outer segment of rod photoreceptors and is essential for their viability. Mutations in this gene have been associated with X-linked retinitis pigmentosa (XLRP). Multiple alternatively spliced transcript variants that encode different isoforms of this gene have been reported, but the full-length nature of only some have been determined. This antibody can recognize all the isoforms of RPGR.

Bemerkenswerte Veröffentlichungen

Verfasser	Pubmed ID	Journal	Anwendung
Dario Cilleros-Rodriguez	36063381	Elife	WB
Fidelle Chahine Karam	35330501	J Pers Med	WB

Lagerung

Lagerungsbedingungen:

Bei -20°C lagern. Nach dem Versand ein Jahr lang stabil

Lagerungspuffer:

PBS mit 0.02% Natriumazid und 50% Glycerin pH 7.3.

Aliquotieren ist nicht notwendig bei -20°C Lagerung

*** 20ul-Größen enthalten 0.1% BSA

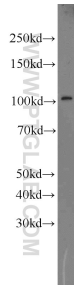
For technical support and original validation data for this product please contact:

T: 1 (888) 4PTGLAB (1-888-478-4522) (toll free in USA), or 1(312) 455-8498 (outside USA)

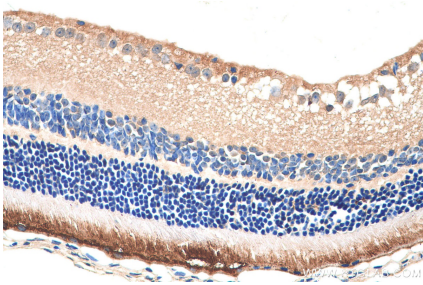
E: proteintech@ptglab.com
W: ptglab.com

This product is exclusively available under Proteintech Group brand and is not available to purchase from any other manufacturer.

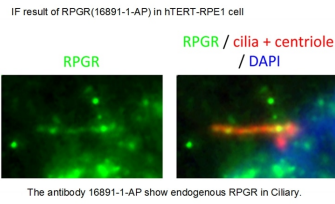
Ausgewählte Validierungsdaten



mouse eye tissue were subjected to SDS PAGE followed by western blot with 16891-1-AP (RPGR antibody) at dilution of 1:500 incubated at room temperature for 1.5 hours.

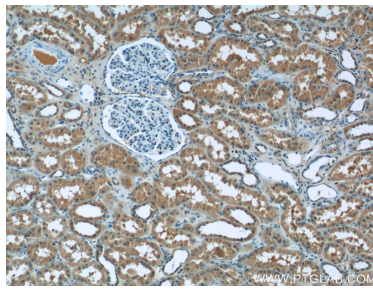


Immunohistochemical analysis of paraffin-embedded mouse eye tissue slide using 16891-1-AP (RPGR antibody) at dilution of 1:200 (under 40x lens). Heat mediated antigen retrieval with Tris-EDTA buffer (pH 9.0).

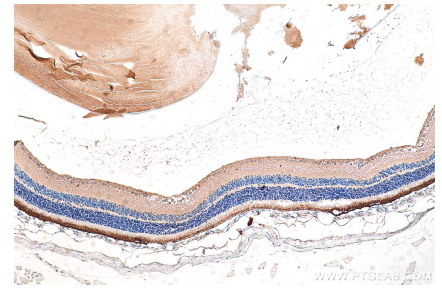


The antibody 16891-1-AP show endogenous RPGR in Ciliary.

IF result of anti-RPGR (16891-1-AP) in hTERT-RPE1 cell by Dr. Seongjin Seo.



Immunohistochemical analysis of paraffin-embedded human kidney tissue slide using 16891-1-AP (RPGR Antibody) at dilution of 1:50 (under 10x lens).



Immunohistochemical analysis of paraffin-embedded mouse eye tissue slide using 16891-1-AP (RPGR antibody) at dilution of 1:200 (under 10x lens). Heat mediated antigen retrieval with Tris-EDTA buffer (pH 9.0).