

# Kir6.2 Polyklonaler Antikörper

Katalog-Nr.: 16920-1-AP

1 Publikationen

## Allgemeine Informationen

Katalog-Nr.:

16920-1-AP

Größe:

150ul, Konzentration: 500 µg/ml von  
Nanodrop;

Wirt:

Kaninchen

Isotyp:

IgG

Immunogen Katalognummer:

AG10262

GenBank-Zugangsnummer:

BC064497

GeneID (NCBI):

3767

Vollständiger Name:

potassium inwardly-rectifying  
channel, subfamily J, member 11

Berechnete Masse:

390 aa, 44 kDa

Beobachtete Masse:

48 kDa

Reinigungsmethode:

Antigen-Affinitätsreinigung

Empfohlene Verdünnungen:

WB 1:200-1:1000

## Anwendungen

Geprüfte Anwendungen:

WB, ELISA

Getestete Reaktivität:

Human, Maus, Ratte

Positivkontrollen:

WB: Rattenherzgewebe, HepG2-Zellen, humanes  
Herzgewebe, Ratten-Skelettmuskelgewebe

## Hintergrundinformationen

Kir6.2 (also known as BIR or IKATP), encoded by the KCNJ11 gene, is the pore-forming unit of the ATP-sensitive K<sup>+</sup> channel, an inward-rectifier potassium ion channel. Kir6.2 is controlled by G-proteins and is found associated with the sulfonylurea receptor (SUR) to constitute the ATP-sensitive K<sup>+</sup> channel. The KCNJ11 gene is located at 11p15.1 and has no intron. Mutations in KCNJ11 are a cause of familial PHHI, an autosomal recessive disorder characterized by unregulated ins secretion. Defects in KCNJ11 may also contribute to autosomal dominant non-ins-dependent diabetes mellitus type II (NIDDM), transient neonatal diabetes mellitus type 3 (TNDM3), and permanent neonatal diabetes mellitus (PNDM).

## Bemerkenswerte Veröffentlichungen

Verfasser	Pubmed ID	Journal	Anwendung
Andrei N Tsentsevitsky	36302500	Life Sci	

## Lagerung

Lagerungsbedingungen:

Bei -20°C lagern. Nach dem Versand ein Jahr lang stabil

Lagerungspuffer:

PBS mit 0.02% Natriumazid und 50% Glycerin pH 7.3.

Aliquotieren ist nicht notwendig bei -20°C Lagerung

\*\*\* 20ul-Größen enthalten 0.1% BSA

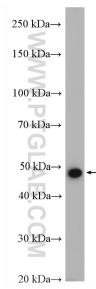
For technical support and original validation data for this product please contact:

T: 1 (888) 4PTGLAB (1-888-478-4522) (toll free  
in USA), or 1(312) 455-8498 (outside USA)

E: [proteintech@ptglab.com](mailto:proteintech@ptglab.com)  
W: [ptglab.com](http://ptglab.com)

This product is exclusively available under Proteintech Group brand and is not available to purchase from any other manufacturer.

## Ausgewählte Validierungsdaten



rat heart tissue were subjected to SDS PAGE followed by western blot with 16920-1-AP (Kir6.2 antibody) at dilution of 1:300 incubated at room temperature for 1.5 hours.